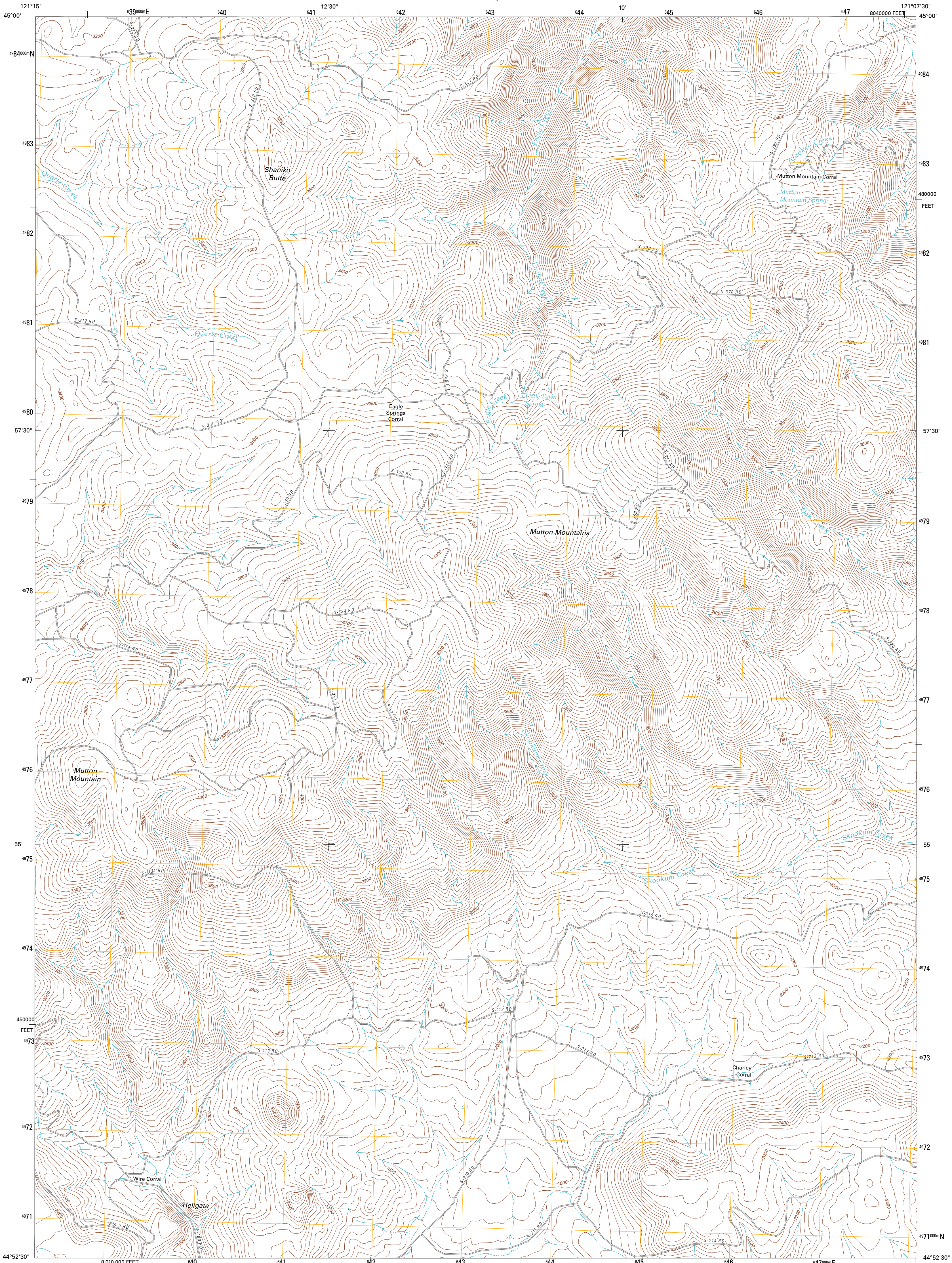




U.S. DEPARTMENT OF THE INTERIOR  
U. S. GEOLOGICAL SURVEY

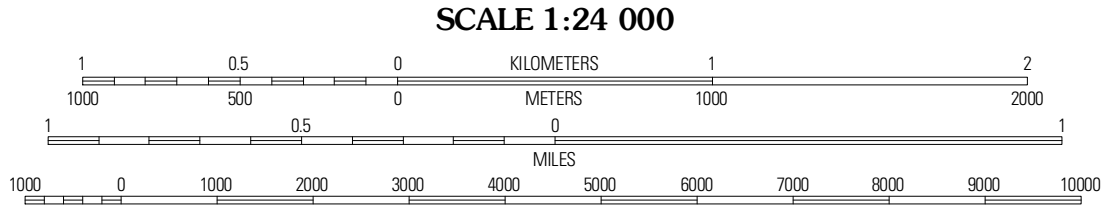
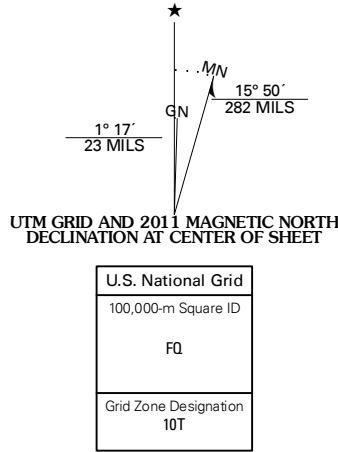


MUTTON MOUNTAIN QUADRANGLE  
OREGON-WASCO CO.  
7.5-MINUTE SERIES



Produced by the United States Geological Survey  
North American Datum of 1983 (NAD83)  
World Geodetic System of 1984 (WGS84). Projection and  
1 000-meter grid: Universal Transverse Mercator, Zone 10T  
10 000-foot ticks: Oregon Coordinate System of 1983 (north  
zone)

Imagery.....NAIP, June 2009 - July 2009  
Roads.....©2006-2010 Tide Atlas  
Names.....©2010  
Hydrography.....National Hydrography Dataset, 2009  
Contours.....National Elevation Dataset, 1999  
Boundaries.....Census, IBWC, IDC, USGS, 1972 - 2010



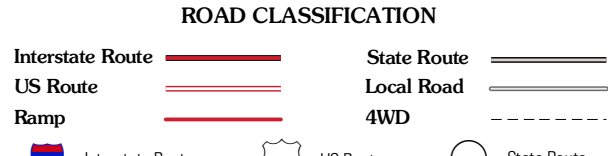
CONTOUR INTERVAL 40 FEET  
NORTH AMERICAN VERTICAL DATUM OF 1988  
This map was produced to conform with version 0.5.10  
of the USGS US Topo Product Standard.  
A metadata file associated with this product is draft version 0.5.16



QUADRANGLE LOCATION

Wapinita	Maignin SW	Dant
Simnasho	Mutton Mountain	Kaskela
Warm Springs	Eagle Butte	Gateway

ADJOINING 7.5 QUADRANGLES



MUTTON MOUNTAIN, OR  
2011