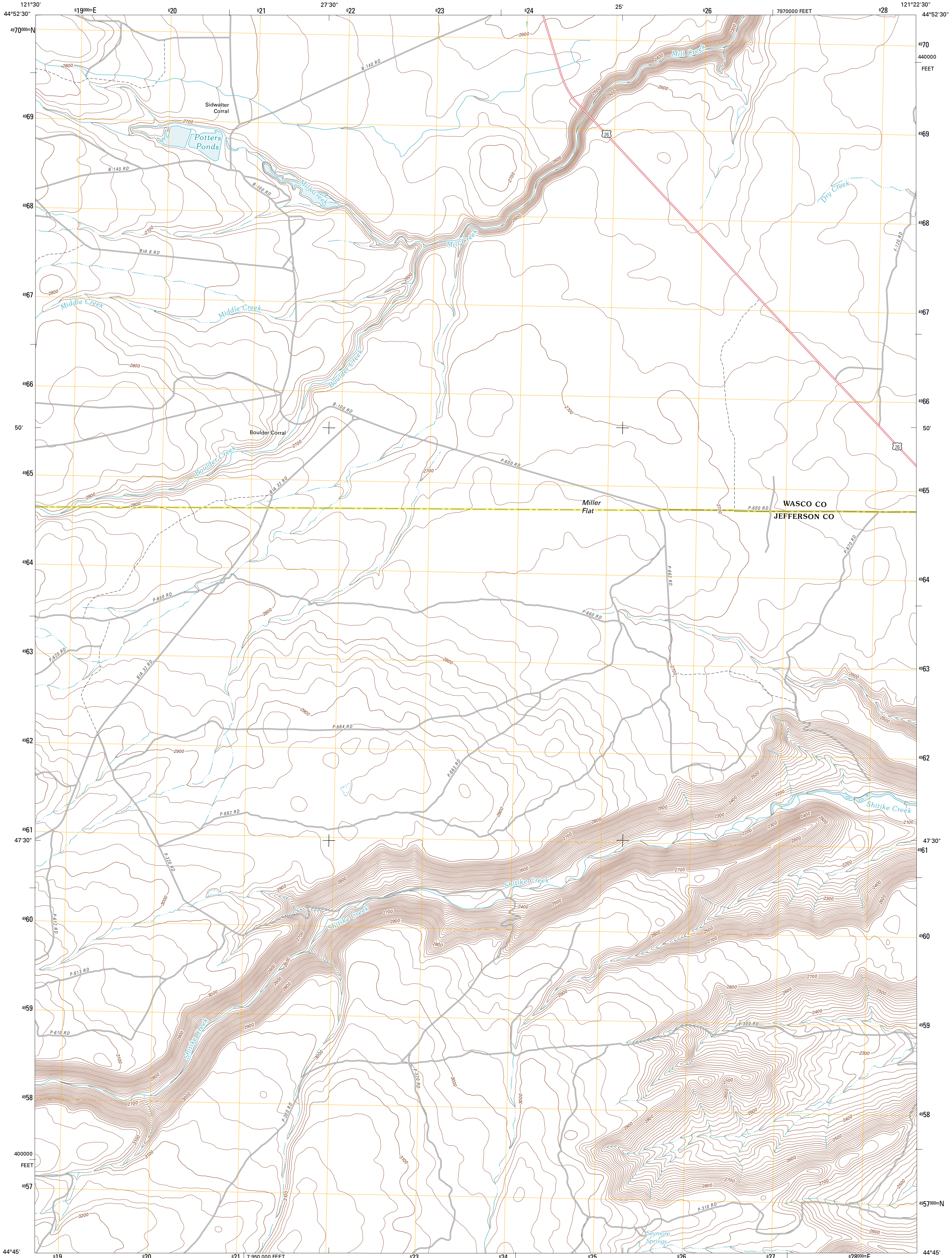




U.S. DEPARTMENT OF THE INTERIOR  
U. S. GEOLOGICAL SURVEY

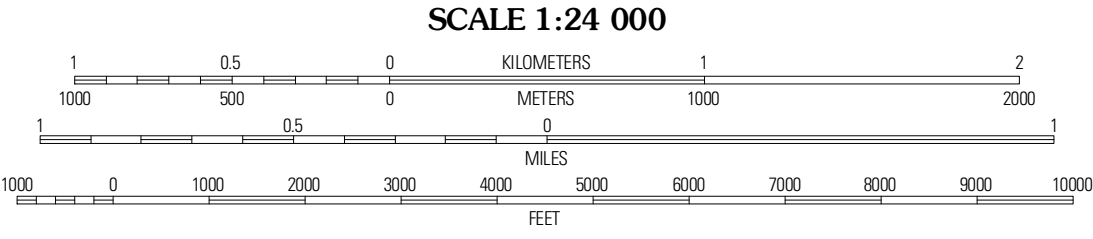
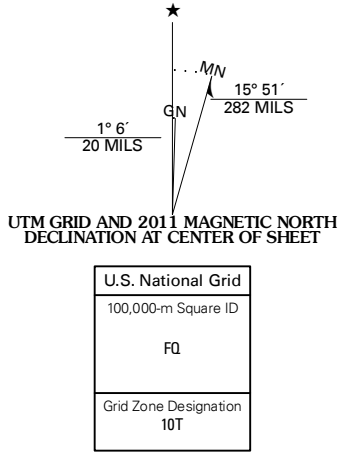


POTTERS PONDS QUADRANGLE  
OREGON  
7.5-MINUTE SERIES



Produced by the United States Geological Survey  
North American Datum of 1983 (NAD83)  
World Geodetic System of 1984 (WGS84). Projection and  
1 000-meter grid: Universal Transverse Mercator, Zone 10T  
10 000-foot ticks: Oregon Coordinate System of 1983 (north  
zone)

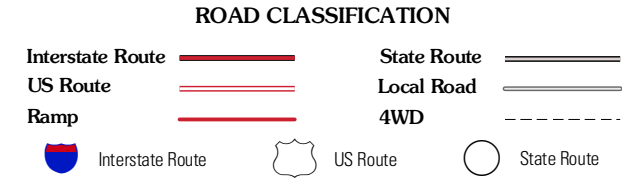
Imagery.....NAIP, June 2009 - July 2009  
Roads.....©2006-2010 Tele Atlas  
Names.....©2010  
Hydrography.....National Hydrography Dataset, 2009  
Contours.....National Elevation Dataset, 1999  
Boundaries.....Census, IBWC, IBC, USGS, 1972 - 2010



CONTOUR INTERVAL 20 FEET  
NORTH AMERICAN VERTICAL DATUM OF 1988  
This map was produced to conform with version 0.5.10  
of the USGS US Topo Product Standard.  
A metadata file associated with this product is draft version 0.5.16



|                 |               |                   |
|-----------------|---------------|-------------------|
| Sidwaller Butte | Hebe Butte    | Simsboro          |
| Sawmill Butte   | Potters Ponds | Warm Springs      |
| Shitike Butte   | Metolus Bench | Selskoog Junction |



POTTERS PONDS, OR  
2011