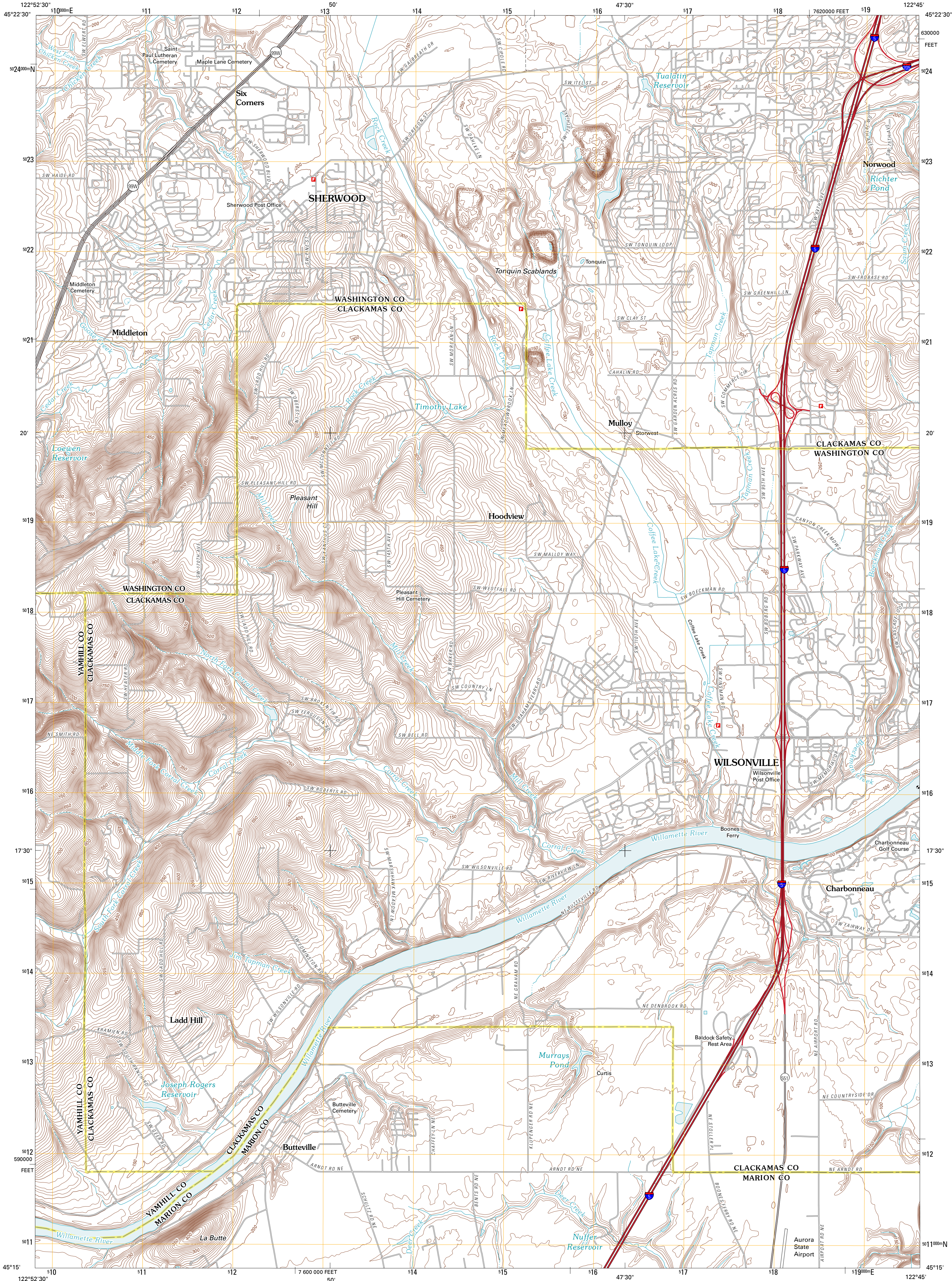




U.S. DEPARTMENT OF THE INTERIOR
U. S. GEOLOGICAL SURVEY

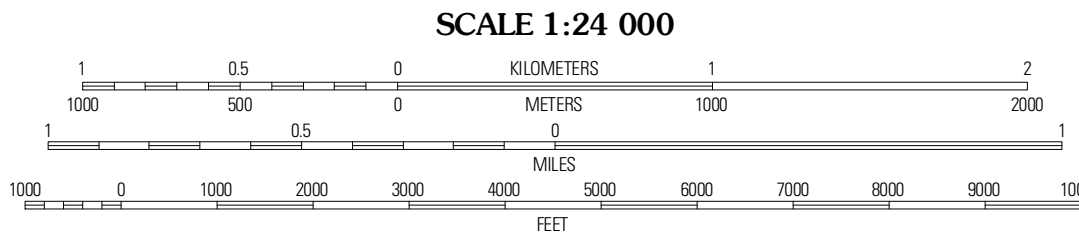
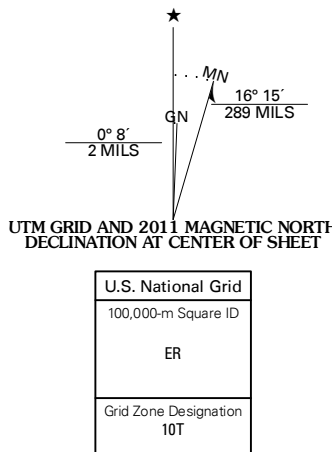


SHERWOOD QUADRANGLE
OREGON
7.5-MINUTE SERIES



Produced by the United States Geological Survey
North American Datum of 1983 (NAD83)
World Geodetic System of 1984 (WGS84). Projection and
1 000 meter grid. Universal Transverse Mercator, Zone 10T
10 000-foot ticks. Oregon Coordinate System of 1983 (north
zone)

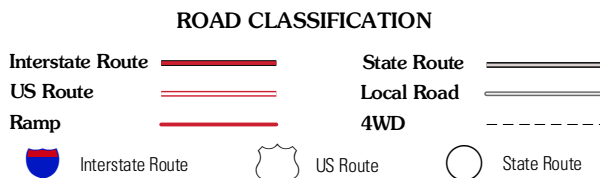
Imagery.....NAIP, June 2009
Roads.....©2006-2010 Tele Atlas
Names.....CNS, 2010
Hydrography.....National Hydrography Dataset, 2009
Contours.....National Elevation Dataset, 2000
Boundaries.....Census, IBWC, IBC, USGS, 1972 - 2010



CONTOUR INTERVAL 10 FEET
NORTH AMERICAN VERTICAL DATUM OF 1988
This map was produced to conform with version 0.5.10
of the USGS US Topo Product Standard.
A metadata file associated with this product is draft version 0.5.16



Scholls	Beaverton	Lake Oswego
Newberg	Sherwood	Canby
Saint Paul	Woodburn	Vader



SHERWOOD, OR
2011