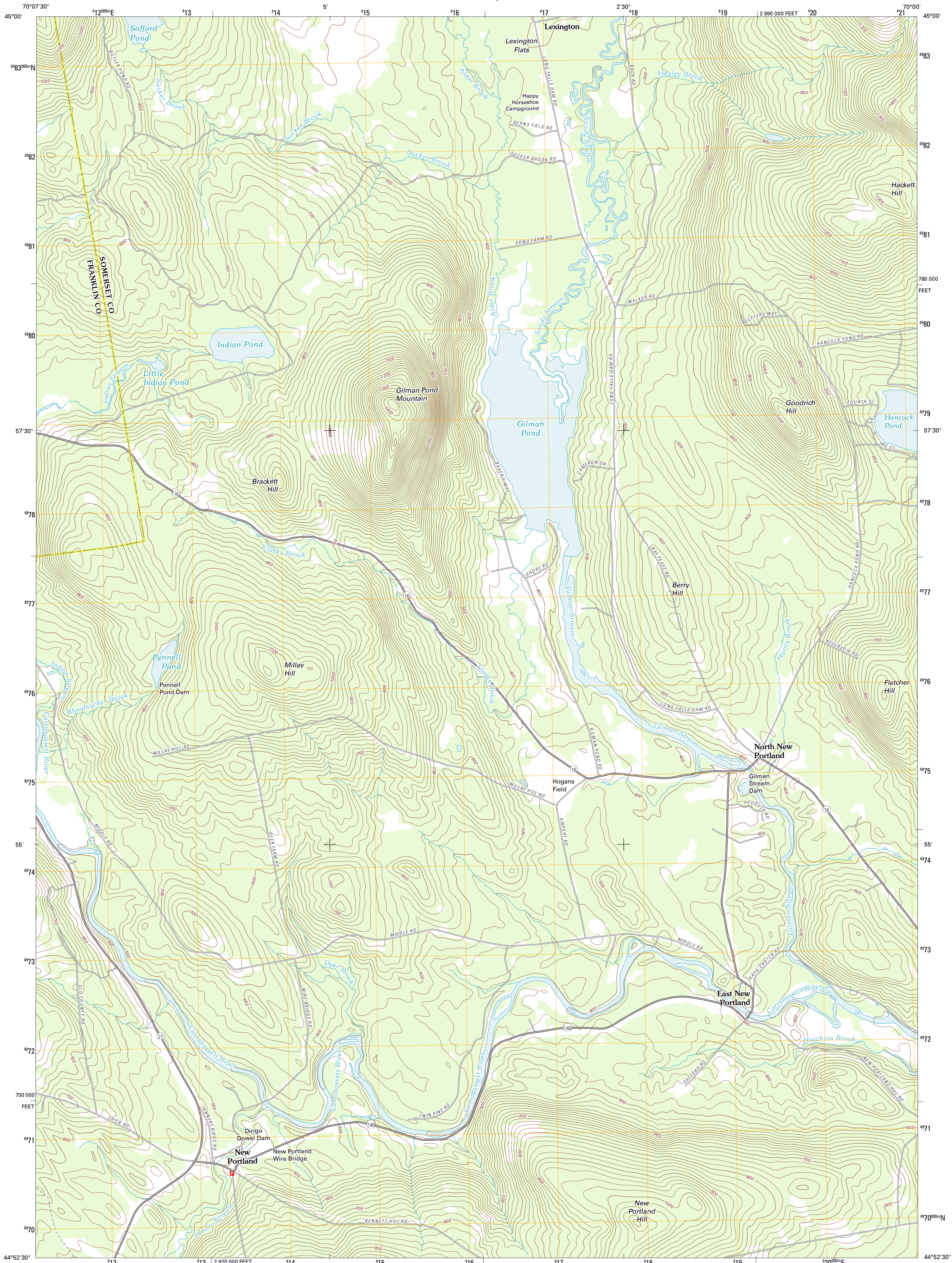




U.S. DEPARTMENT OF THE INTERIOR
U. S. GEOLOGICAL SURVEY

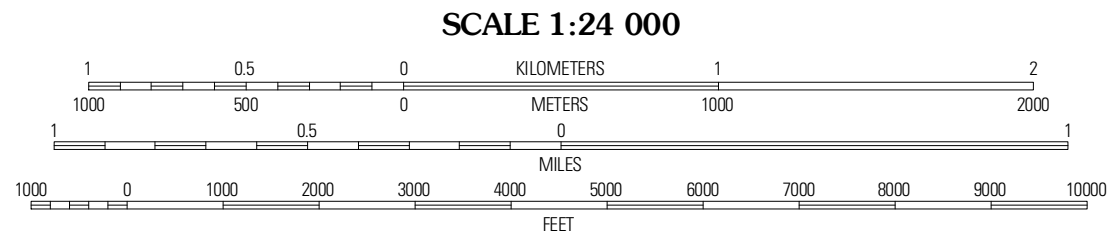
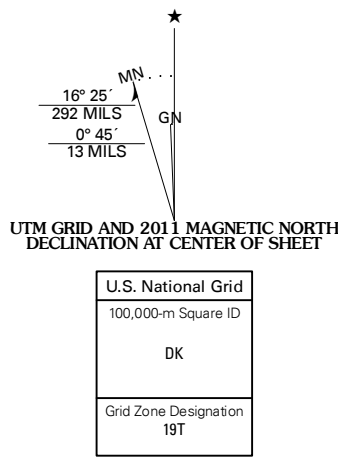


NEW PORTLAND QUADRANGLE
MAINE
7.5-MINUTE SERIES



Produced by the United States Geological Survey
North American Datum of 1983 (NAD83)
World Geodetic System of 1984 (WGS84). Projection and
1 000-meter grid: Universal Transverse Mercator, Zone 19T
10 000-foot ticks: Maine Coordinate System of 1983 (west zone)

Imagery.....NAIP, August 2009
Roads.....©2006-2011 TomTom
Names.....GNSS, 2011
Hydrography.....National Hydrography Dataset, 2009
Contours.....National Elevation Dataset, 2004
Boundaries.....Census, IBWC, IBC, USGS, 1972 - 2010



CONTOUR INTERVAL 20 FEET
NORTH AMERICAN VERTICAL DATUM OF 1988
This map was produced to conform with the
National Geospatial Program US Topo Product Standard, 2011.
A metadata file associated with this product is draft version 0.6.0



| ADJOINING 7.5' QUADRANGLES | | |
|----------------------------|------------------|-------------|
| Poplar Mountain | Whitman Mountain | Bingham |
| Kingfield | New Portland | Emblem Pond |
| Strong | New Vineyard | Midway West |

| ROAD CLASSIFICATION | | |
|---------------------|------------------|------------|
| Interstate Route | State Route | Local Road |
| US Route | 4WD | |
| Ramp | Interstate Route | US Route |

NEW PORTLAND, ME
2011