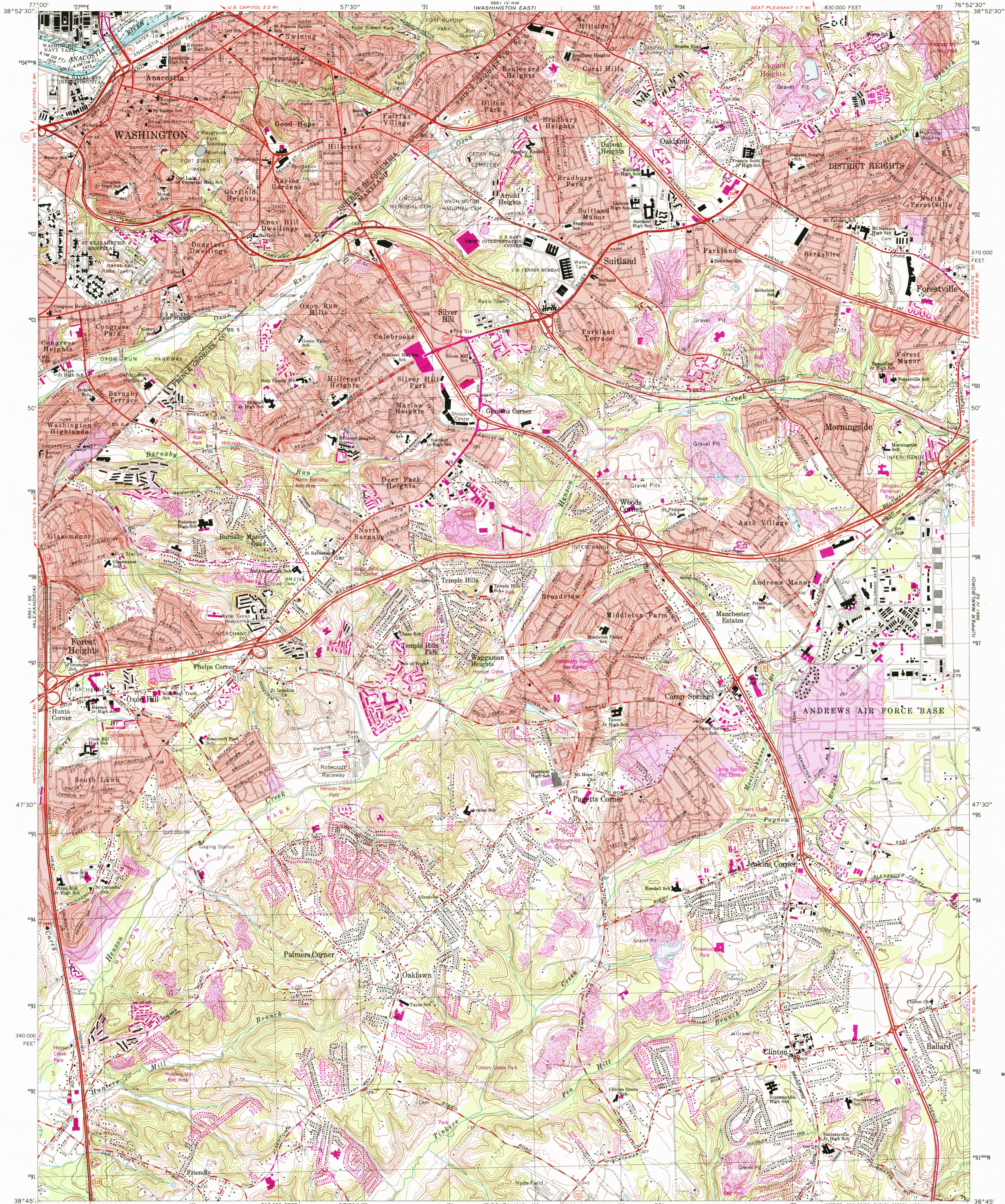


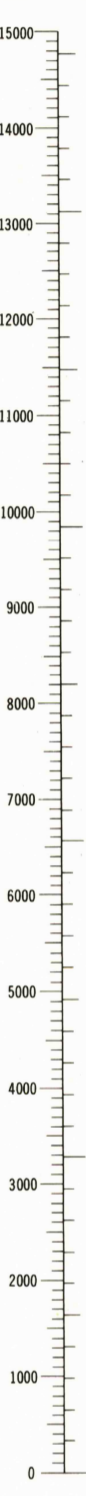
UNITED STATES  
DEPARTMENT OF THE INTERIOR  
GEOLOGICAL SURVEY

ANACOSTIA QUADRANGLE  
DISTRICT OF COLUMBIA—MARYLAND  
7.5 MINUTE SERIES (TOPOGRAPHIC—BATHYMETRIC)



CONVERSION  
SCALES

Feet Meters



Feet Meters

1	3048
2	6096
3	9144
4	12192
5	15240
6	18288
7	21336
8	24384
9	27432
10	30480

To convert feet to meters  
multiply by 3.048

To convert meters to feet  
multiply by 3.2808

Exposed at low tide

0 Feet

DEPTH GRADIENT

16.4

Maximum depth

ROAD CLASSIFICATION

- Heavy-duty ——— Light-duty ———
- Medium-duty ——— Unimproved dirt ———
- Interstate Route ——— State Route ———

ANACOSTIA, D.C. — MD.

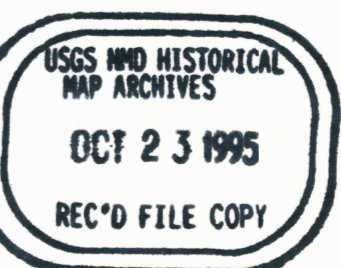
38076-GB-TF-024

1965

PHOTOREVISED 1979

BATHYMETRY ADDED 1982

DMA 5661 IV SW—SERIES V833



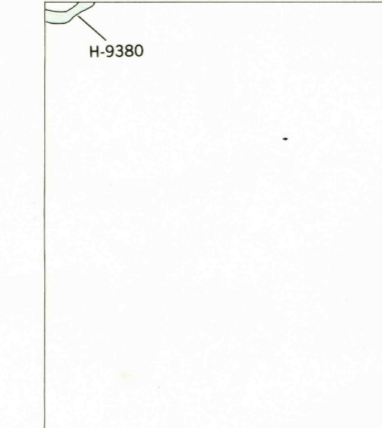
QUADRANGLE LOCATION

142 MILES

113' 22' MILES

UTM GRID AND 1979 MAGNETIC NORTH DECLINATION AT CENTER OF SHEET

NATIONAL OCEAN SURVEY  
HYDROGRAPHIC SURVEY INDEX



HYDROGRAPHIC SURVEY INFORMATION

Survey Number	Survey Date	Survey Scale	Survey Line Spacing (Naut. Miles)
H-9380	1973	1:10,000	01—05

CONTOUR INTERVAL 10 FEET

NATIONAL GEODETIC VERTICAL DATUM OF 1929

BATHYMETRIC CONTOUR INTERVAL 1 METER WITH SUPPLEMENTARY

0.5 METER CONTOURS—DATUM IS MEAN LOW WATER

THE RELATIONSHIP BETWEEN THE TWO DATUMS IS VARIABLE

THE MEAN RANGE OF TIDE IS APPROXIMATELY 0.4 METER

BASE MAP COMPLIES WITH NATIONAL MAP ACCURACY STANDARDS

BATHYMETRIC SURVEY DATA COMPLIES WITH INTERNATIONAL HYDROGRAPHIC ORGANIZATION (IHO) SPECIAL PUBLICATION 44 ACCURACY STANDARDS

AND/OR STANDARDS USED AT THE DATE OF THE SURVEY

FOR SALE BY U. S. GEOLOGICAL SURVEY, RESTON, VIRGINIA 22092

AND NATIONAL OCEAN SURVEY, ROCKVILLE, MARYLAND 20852

A FOLDER DESCRIBING TOPOGRAPHIC MAPS AND SYMBOLS IS AVAILABLE ON REQUEST

Maped, edited, and published by the Geological Survey and the National Ocean Survey

Control by USGS, NOS/NOAA, USCE, NCPS, and WSSC

Topography by photogrammetric methods from aerial photographs taken 1955. Field checked 1956. Revised 1965

Bathymetry compiled by the National Ocean Survey from tide-coordinated hydrographic surveys. This information is not intended for navigational purposes

Mean low water (dotted) line and mean high water (heavy solid) line compiled by NOS from tide-coordinated photographs. Apparent shoreline (outer edge of vegetation) shown by light solid line

Polyconic projection. 10,000-foot grid ticks based on Maryland coordinate system

1000-meter Universal Transverse Mercator grid, zone 18

1927 North American Datum

To place on the predicted North American Datum 1983 move the projection lines 9 meters south and 26 meters west as shown by dashed corner ticks

Fine red dashed lines indicate selected fence and field lines where generally visible on aerial photographs. This information is unchecked

Red tint indicates areas in which only landmark buildings are shown

There may be private inholdings within the boundaries of the National or State reservations shown on this map

Revisions shown in purple compiled from aerial photographs taken 1977 and other sources. This information not field checked

Map edited 1979

Purple tint indicates extension of urban areas