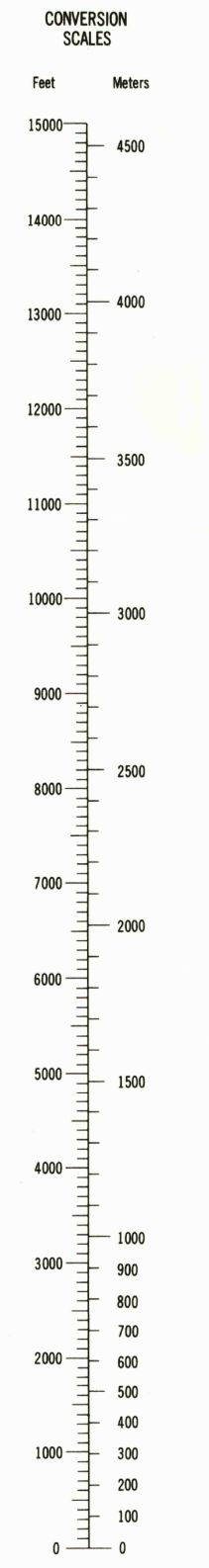
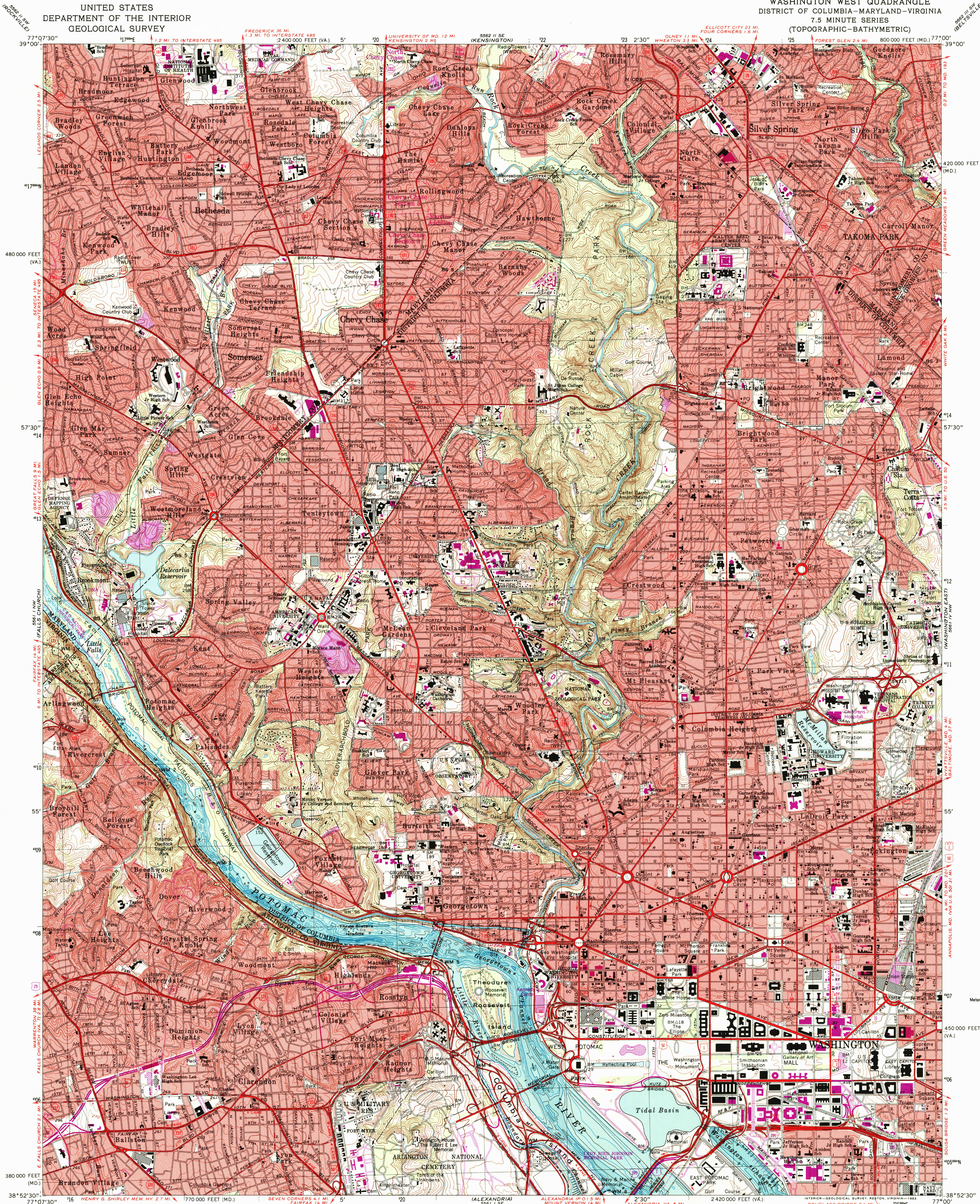


UNITED STATES
DEPARTMENT OF THE INTERIOR
GEOLOGICAL SURVEY

WASHINGTON WEST QUADRANGLE
DISTRICT OF COLUMBIA-MARYLAND-VIRGINIA
7.5 MINUTE SERIES
(TOPOGRAPHIC-BATHYMETRIC)



Mapped, edited, and published by the Geological Survey and the National Ocean Service
Control by USGS, NOS/NOAA, NCPS, and WSSC
Compiled by photogrammetric methods from aerial photographs taken 1955. Field checked 1956. Revised 1965.
Bathymetry compiled by the National Ocean Service from tide-coordinated hydrographic surveys. This information is not intended for navigational purposes.
Mean low water (dotted) line and mean high water (heavy solid) line compiled by NOS from tide-coordinated aerial photographs. Apparent shoreline (outer edge of vegetation) shown by light solid line.
Polyconic projection. 10,000-foot grid ticks based on Maryland coordinate system, and Virginia coordinate system, north zone 1000-meter Universal Transverse Mercator grid, zone 18 1927 North American Datum.
To place on the predicted North American Datum 1983 move the projection lines 8 meters south and 26 meters west as shown by dashed corner ticks.
Red tint indicates areas in which only landmark buildings are shown. There may be private inholdings within the boundaries of the National or State reservations shown on this map.
Revisions shown in purple and woodland compiled in cooperation with Commonwealth of Virginia photographs from aerial photographs taken 1981 and other sources. This information not field checked.
Map tinted 1983.
Purple tint indicates extension of urban areas.

NATIONAL OCEAN SERVICE
HYDROGRAPHIC SURVEY INDEX

Survey Number	Survey Date	Survey Scale	Survey Line spacing (Naut. Miles)
H-9478	1977	1:5,000	01-08
H-9488	1976	1:5,000	01-05

HYDROGRAPHIC SURVEY INFORMATION

Survey Number	Survey Date	Survey Scale	Survey Line spacing (Naut. Miles)
H-9478	1977	1:5,000	01-08
H-9488	1976	1:5,000	01-05

SCALE 1:24,000
1 2000 0 1000 2000 3000 4000 5000 6000 7000 FEET
1 5 10 20 30 40 50 KILOMETER

CONTOUR INTERVAL 10 FEET
NATIONAL GEODETIC VERTICAL DATUM OF 1929
BATHYMETRIC CONTOUR INTERVAL 1 METER WITH SUPPLEMENTARY 0.5 METER CONTOURS-DATUM IS MEAN LOW WATER
THE RELATIONSHIP BETWEEN THE TWO DATUMS IS VARIABLE
THE MEAN RANGE OF TIDE IS APPROXIMATELY 0.4 METER

BASE MAP COMPILED WITH NATIONAL MAP ACCURACY STANDARDS
BATHYMETRIC SURVEY DATA COMPILED WITH INTERNATIONAL HYDROGRAPHIC ORGANIZATION (IHO) SPECIAL PUBLICATION 44 ACCURACY STANDARDS
AND/OR STANDARDS USED AT THE DATE OF THE SURVEY
FOR SALE BY U.S. GEOLOGICAL SURVEY
DENVER, COLORADO 80225 OR RESTON, VIRGINIA 22092
NATIONAL OCEAN SERVICE, ROCKVILLE, MARYLAND 20852
AND VIRGINIA DIVISION OF MINERAL RESOURCES, CHARLOTTESVILLE, VIRGINIA 22903
A FOLDER DESCRIBING TOPOGRAPHIC MAPS AND SYMBOLS IS AVAILABLE ON REQUEST

ROAD CLASSIFICATION
Heavy-duty ——— Light-duty ———
Medium-duty ——— Unimproved dirt ———
Interstate Route ——— U.S. Route ——— State Route ———

QUADRANGLE LOCATION
MARYLAND
160 MILES
1:18
23 MILES

WASHINGTON WEST, D. C.-MD.-VA.
38077-H1-TB-024
1965
PHOTOREVISED 1983
BATHYMETRY ADDED 1982
DMA 5561-1 NE-SERIES V833

UTM GRID AND 1983 MAGNETIC NORTH DECLINATION AT CENTER OF SHEET

