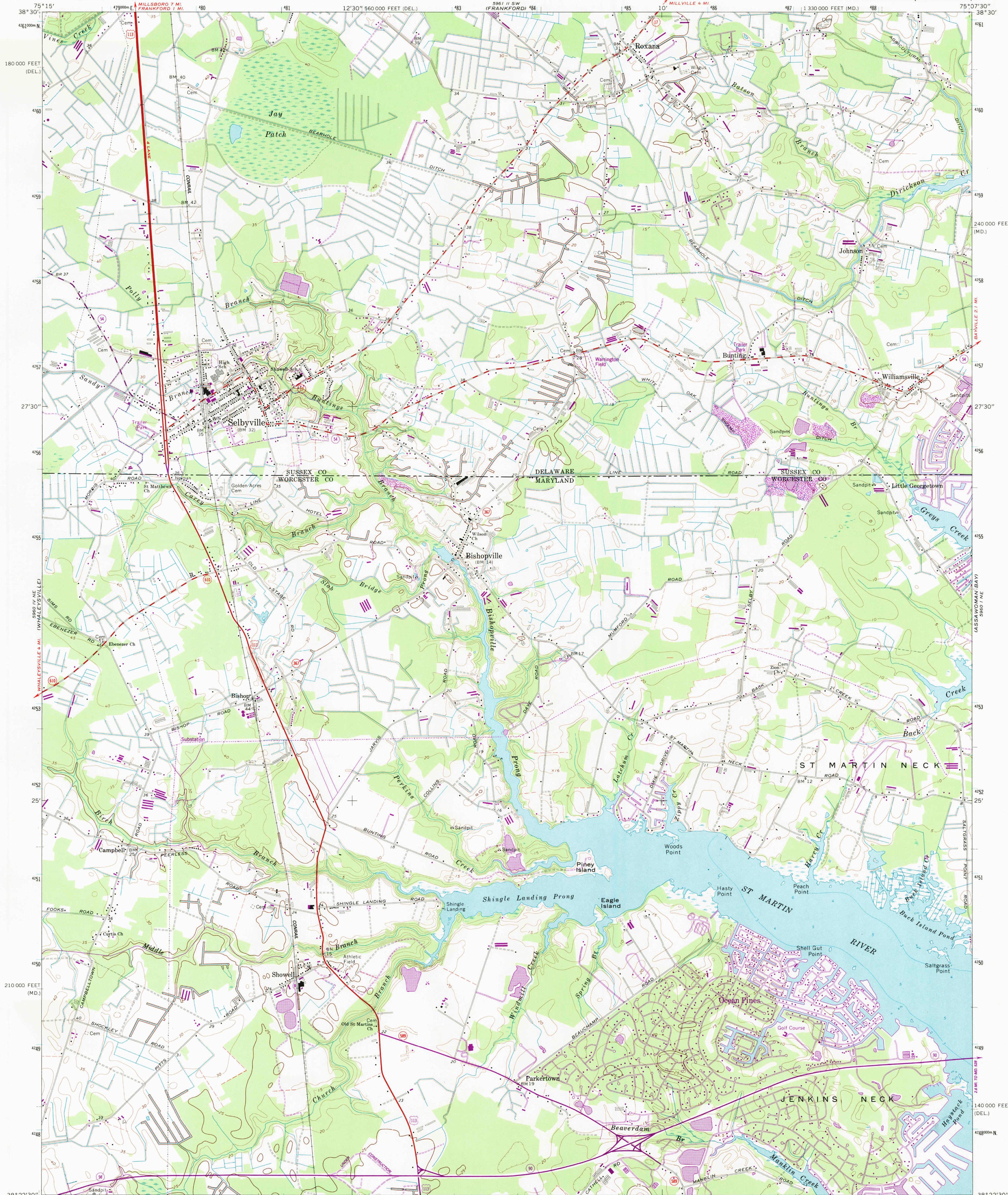
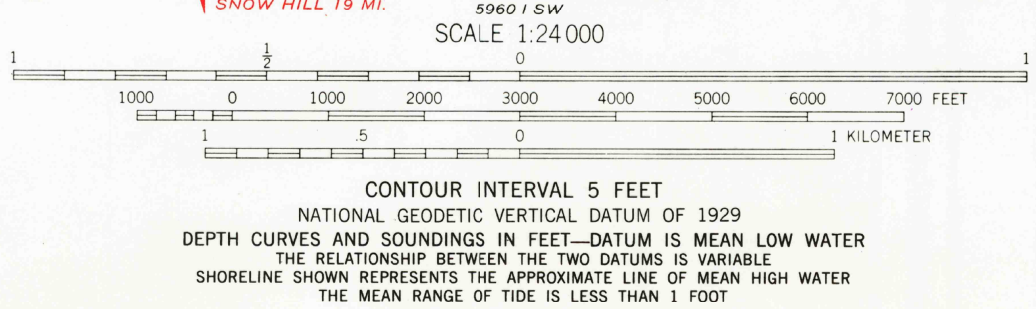
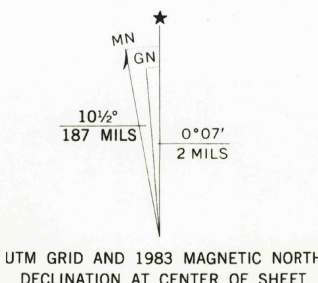


UNITED STATES  
DEPARTMENT OF THE INTERIOR  
GEOLOGICAL SURVEY

SELBYVILLE QUADRANGLE  
DELAWARE - MARYLAND  
7.5 MINUTE SERIES (TOPOGRAPHIC)



Mapped, edited, and published by the Geological Survey  
Control by USGS, NOS/NOAA, and Maryland Bureau of Control Surveys  
Topography by photogrammetric methods from aerial  
photographs taken 1963. Field checked 1967  
Selected hydrographic data compiled from NOS chart 1220 (1966)  
This information is not intended for navigational purposes  
Polyconic projection. 10,000-foot grid ticks based on Maryland  
coordinate system, and Delaware coordinate system. 1000-meter  
Universal Transverse Mercator grid ticks, zone 18, shown in  
blue. 1927 North American Datum. To place on the predicted  
North American Datum 1983 move the projection lines  
8 meters south and 32 meters west as shown by dashed  
corner ticks  
Fine red dashed lines indicate selected fence and field lines where  
generally visible on aerial photographs. This information is unchecked



ROAD CLASSIFICATION  
Primary highway, all weather, Light-duty road, all weather,  
hard surface, improved surface  
Secondary highway, all weather, Unimproved road, fair or dry  
hard surface, weather  
U.S. Route State Route  
Revisions shown in purple and woodland compiled from aerial  
photographs taken 1981 and other sources. This information not  
field checked. Map edited 1983  
1967  
PHOTOREVISED 1983  
DMA 5960 1 NW-SERIES V833

3/19/84  
SEE MAP/2ND  
FOR OTHER MAP