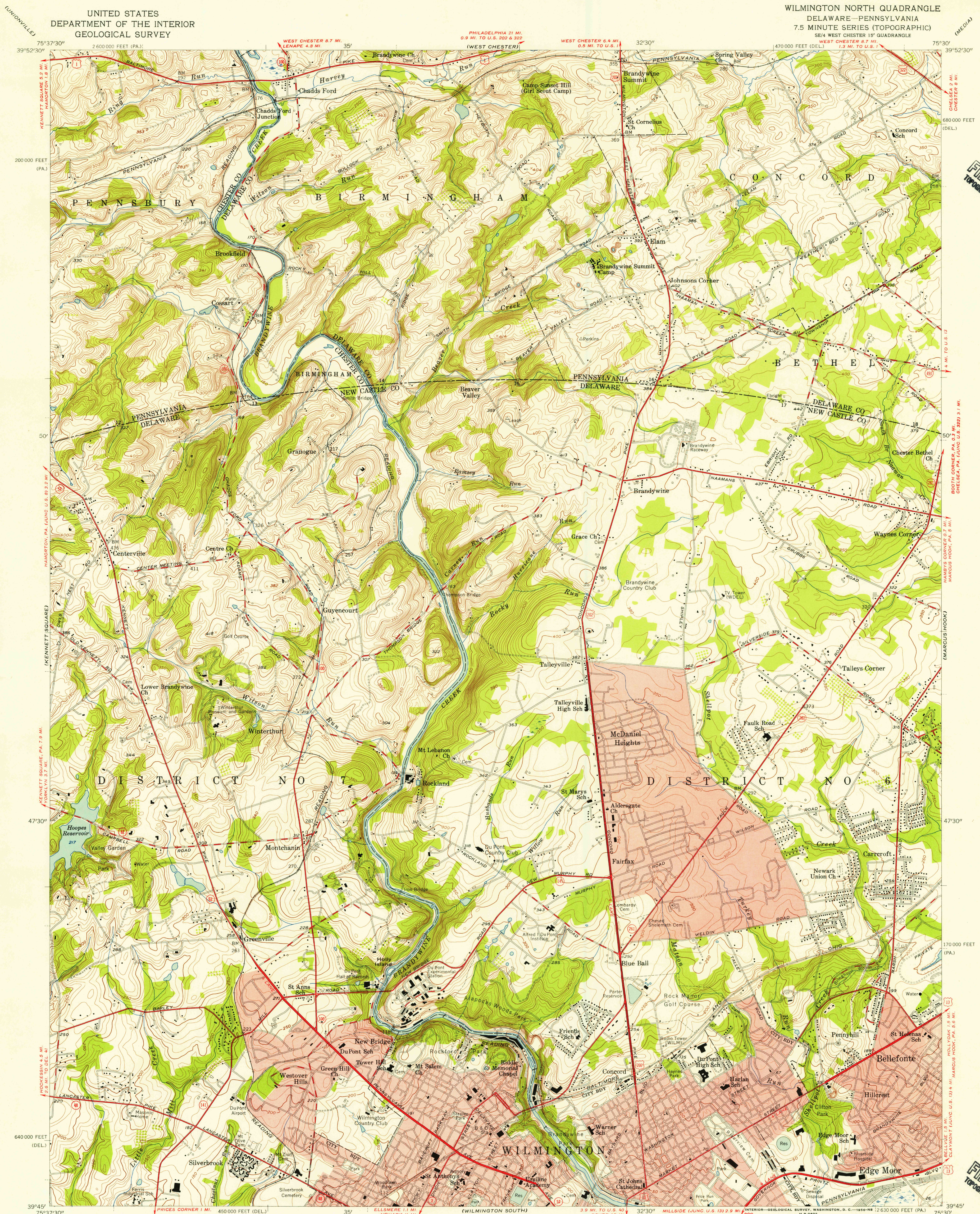


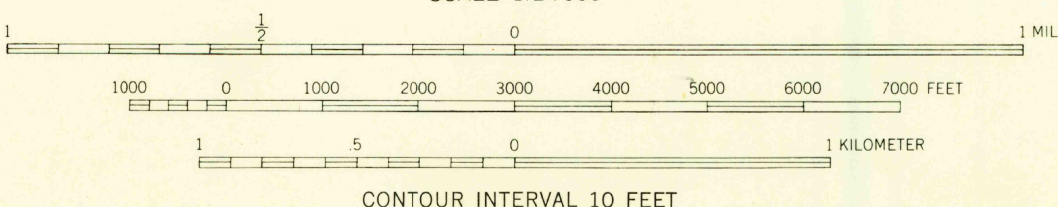
UNITED STATES
DEPARTMENT OF THE INTERIOR
GEOLOGICAL SURVEY

WILMINGTON NORTH QUADRANGLE
DELAWARE-PENNSYLVANIA
7.5 MINUTE SERIES (TOPOGRAPHIC)
SE/4 WEST CHESTER 15' QUADRANGLE



Mapped, edited, and published by the Geological Survey
Control by USGS and USC&GS
Topography in Delaware by plane-table surveys 1935-1936
Revised 1954. Topography in Pennsylvania from aerial photographs
by Wild A-5. Aerial photographs taken 1950. Field check 1954
Polyconic projection. 1927 North American datum
10,000-foot grids based on Delaware coordinate system,
and Pennsylvania coordinate system, south zone
Red tint indicates areas in which only
landmark buildings are shown
Unchecked elevations are shown in brown

APPROXIMATE MEAN
DECLINATION, 1954



USGS
Historical File
Topographic Division

ROAD CLASSIFICATION
Heavy-duty ——— Light-duty ———
Medium-duty ——— Unimproved dirt ———
U.S. Route ——— State Route ———

WILMINGTON NORTH, DEL.-PA.
SE/4 WEST CHESTER 15' QUADRANGLE
N 3945-W 7530/7.5

1954

JAN 3 1956

FILE COPY
TOPOGRAPHIC DIVISION

FILE COPY
TOPOGRAPHIC DIVISION

THIS MAP COMPLIES WITH NATIONAL MAP ACCURACY STANDARDS
FOR SALE BY U. S. GEOLOGICAL SURVEY, WASHINGTON 25, D. C.
A FOLDER DESCRIBING TOPOGRAPHIC MAPS AND SYMBOLS IS AVAILABLE ON REQUEST