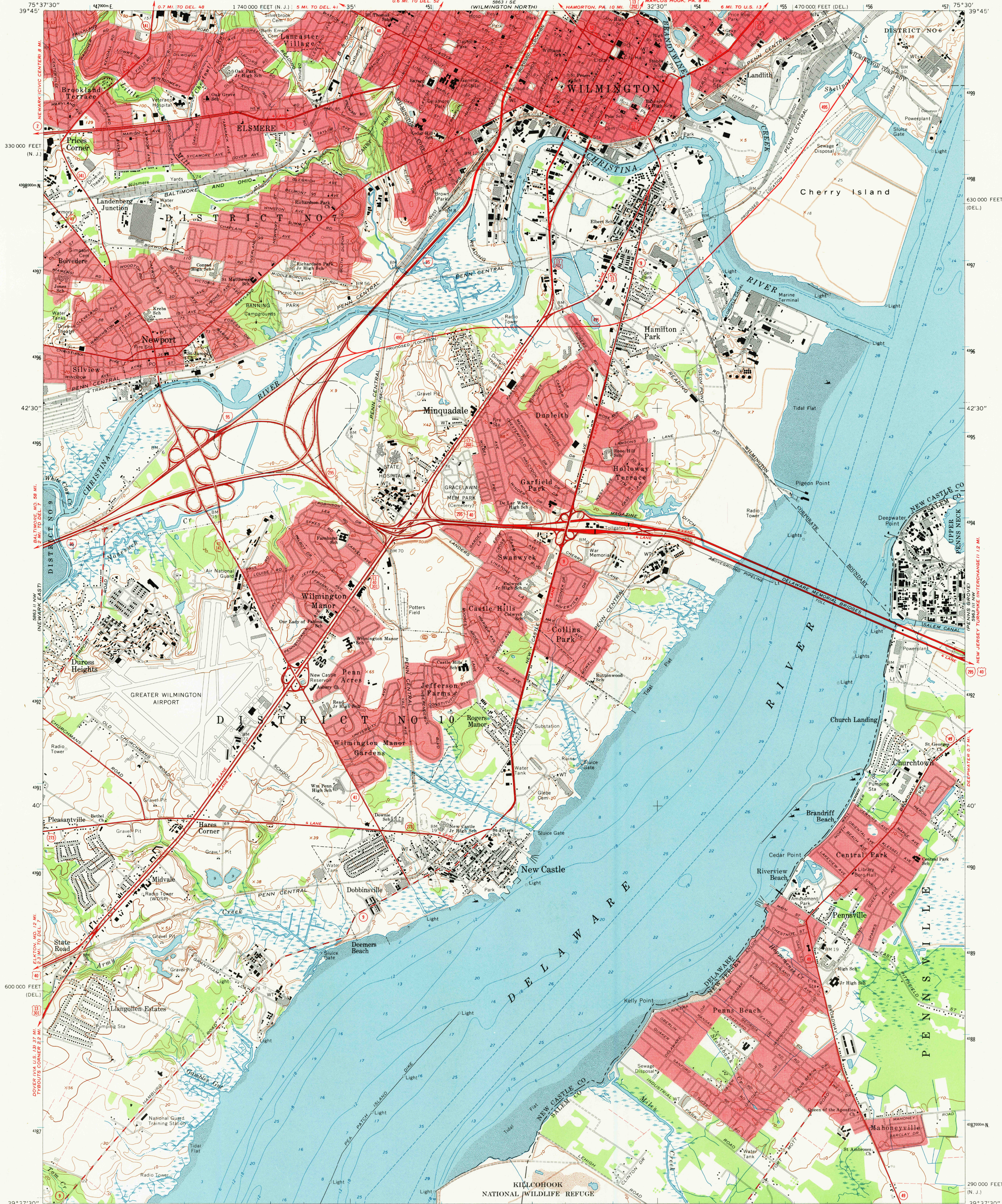
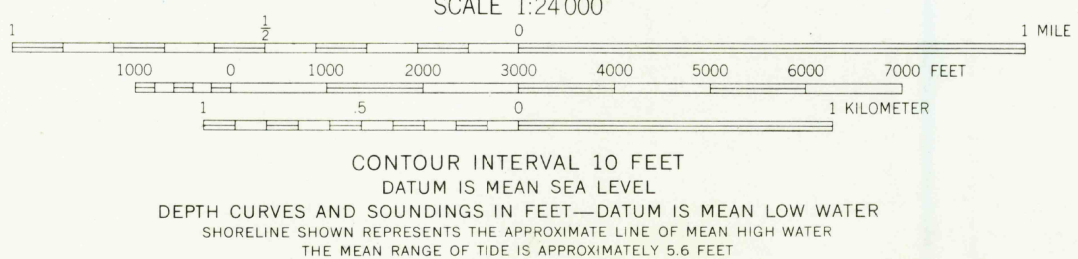
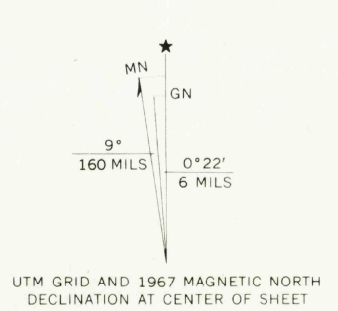


UNITED STATES
DEPARTMENT OF THE INTERIOR
GEOLOGICAL SURVEY

WILMINGTON SOUTH QUADRANGLE
DELAWARE—NEW JERSEY
7.5 MINUTE SERIES (TOPOGRAPHIC)
NE/4 WILMINGTON 15' QUADRANGLE



Mapped by U. S. Coast and Geodetic Survey
Edited and published by the Geological Survey
Control by USGS, USC&GS, and USCE
Planimetry by photogrammetric methods from aerial photographs taken 1946
Topography by plane-table surveys 1946. Field checked 1948
Revised by the Geological Survey from aerial photographs
taken 1965. Field checked 1967
This information is not intended for navigational purposes
Polyconic projection. 1927 North American datum
10,000-foot grids based on Delaware and New Jersey coordinate systems
1000-meter Universal Transverse Mercator grid ticks,
zone 18, shown in blue
Fine red dashed lines indicate selected fence and field lines where
generally visible on aerial photographs. This information is unchecked
Red tint indicates areas in which only landmark buildings are shown



THIS MAP COMPLIES WITH NATIONAL MAP ACCURACY STANDARDS
FOR SALE BY U. S. GEOLOGICAL SURVEY, WASHINGTON, D. C. 20242
A FOLDER DESCRIBING TOPOGRAPHIC MAPS AND SYMBOLS IS AVAILABLE ON REQUEST

ROAD CLASSIFICATION

Heavy-duty	Light-duty
Medium-duty	Unimproved dirt
Interstate Route	U. S. Route
	State Route

WILMINGTON SOUTH, DEL.—N. J.
NE/4 WILMINGTON 15' QUADRANGLE
N3937.5—W7530/7.5
1967
AMS 5863 II NE—SERIES V832

USGS
Historical File
Topographic Division

6390
T/O