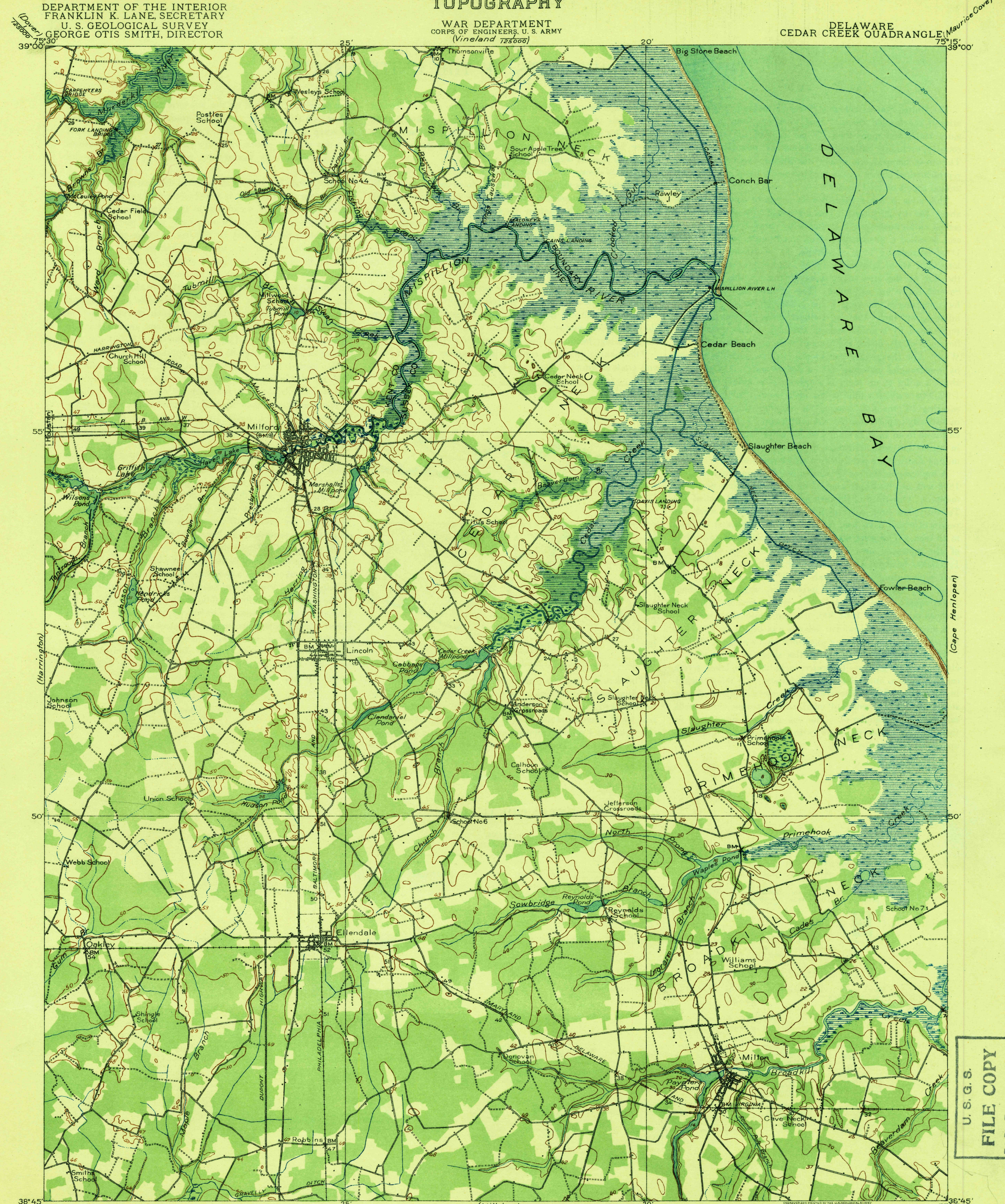


TOPOGRAPHY

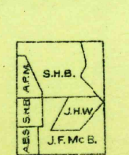
DEPARTMENT OF THE INTERIOR
FRANKLIN K. LANE, SECRETARY
U. S. GEOLOGICAL SURVEY
GEORGE OTIS SMITH, DIRECTOR

WAR DEPARTMENT
CORPS OF ENGINEERS, U. S. ARMY
(Vineland 125000)

DELAWARE
CEDAR CREEK QUADRANGLE (Maurice Cove)



(Seaford) 38°45' 75°30'
R. B. Marshall, Chief Geographer.
W. H. Herron, Geographer in charge.
Topography by S. H. Birdseye, J. F. McBeth, A. P. Meade,
A. B. Searle, and J. H. Wilson.
Control by U. S. Coast and Geodetic Survey, S. H. Birdseye,
H. M. Gillman, Jr., E. L. McNair, and J. H. Wilson.
Surveyed in 1917.



Contour interval 10 feet.
Datum is mean sea level.

U.S.G.S.
Historical File
Topographic Division
Edition of 1918.
AUG 31 1918 3400
CEDAR CREEK, DEL.
(Rehoboth) 38°45' 75°15'