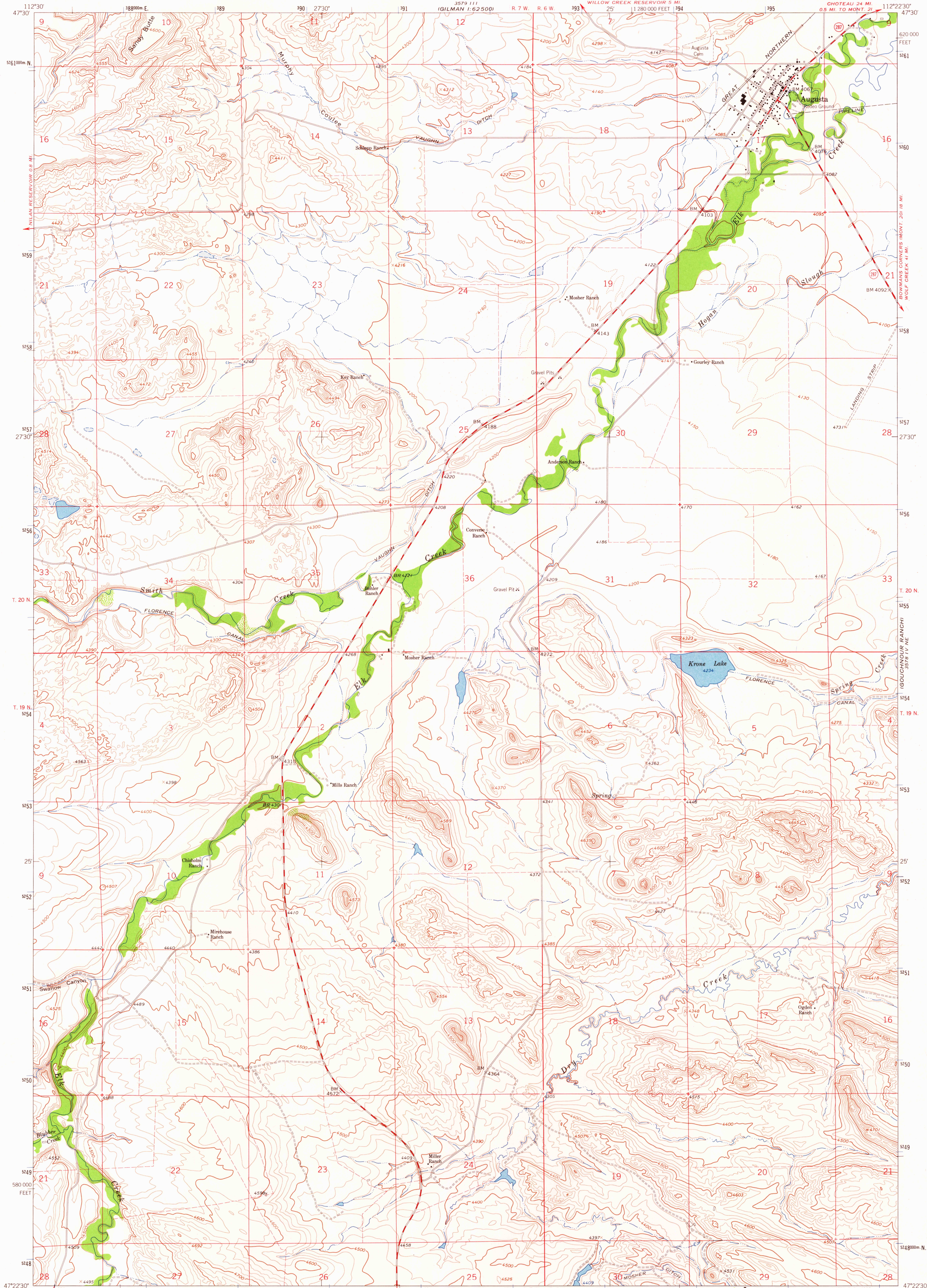


UNITED STATES
DEPARTMENT OF THE INTERIOR
GEOLOGICAL SURVEY

AUGUSTA QUADRANGLE
MONTANA-LEWIS AND CLARK CO.
7.5 MINUTE SERIES (TOPOGRAPHIC)



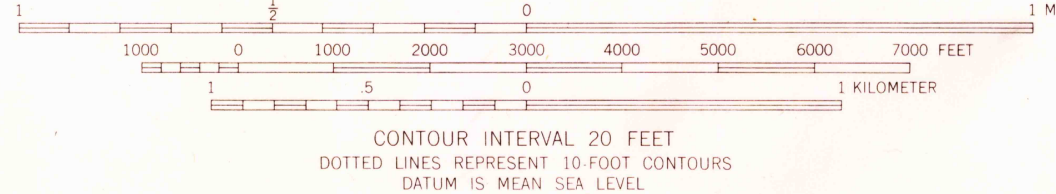
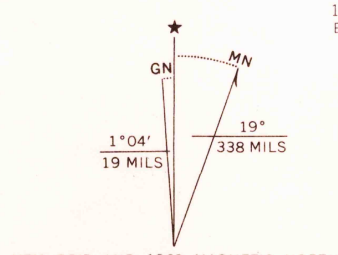
Maped, edited, and published by the Geological Survey

Control by USGS and USC&GS

Topography by photogrammetric methods from aerial
photographs taken 1961. Field checked 1963

Polycyclic projection. 1927 North American datum
10,000-foot grid based on Montana coordinate system, central zone
1000-meter Universal Transverse Mercator grid ticks,
zone 12, shown in blue

Fine red dashed lines indicate selected fence lines



ROAD CLASSIFICATION
Medium-duty ——— Light-duty ———
Unimproved dirt ———
State Route ———



AUGUSTA, MONT.
N4722.5-W11222.5/7.5

1963

AMS 3578 IV NW-SERIES V894

THIS MAP COMPLIES WITH NATIONAL MAP ACCURACY STANDARDS
FOR SALE BY U.S. GEOLOGICAL SURVEY, DENVER 25, COLORADO OR WASHINGTON 25, D.C.
A FOLDER DESCRIBING TOPOGRAPHIC MAPS AND SYMBOLS IS AVAILABLE ON REQUEST

USGS
Historical File
Topographic Division

MAR 22 1965

U.S.G.S.
FILE COPY
TOPOGRAPHIC DIVISION