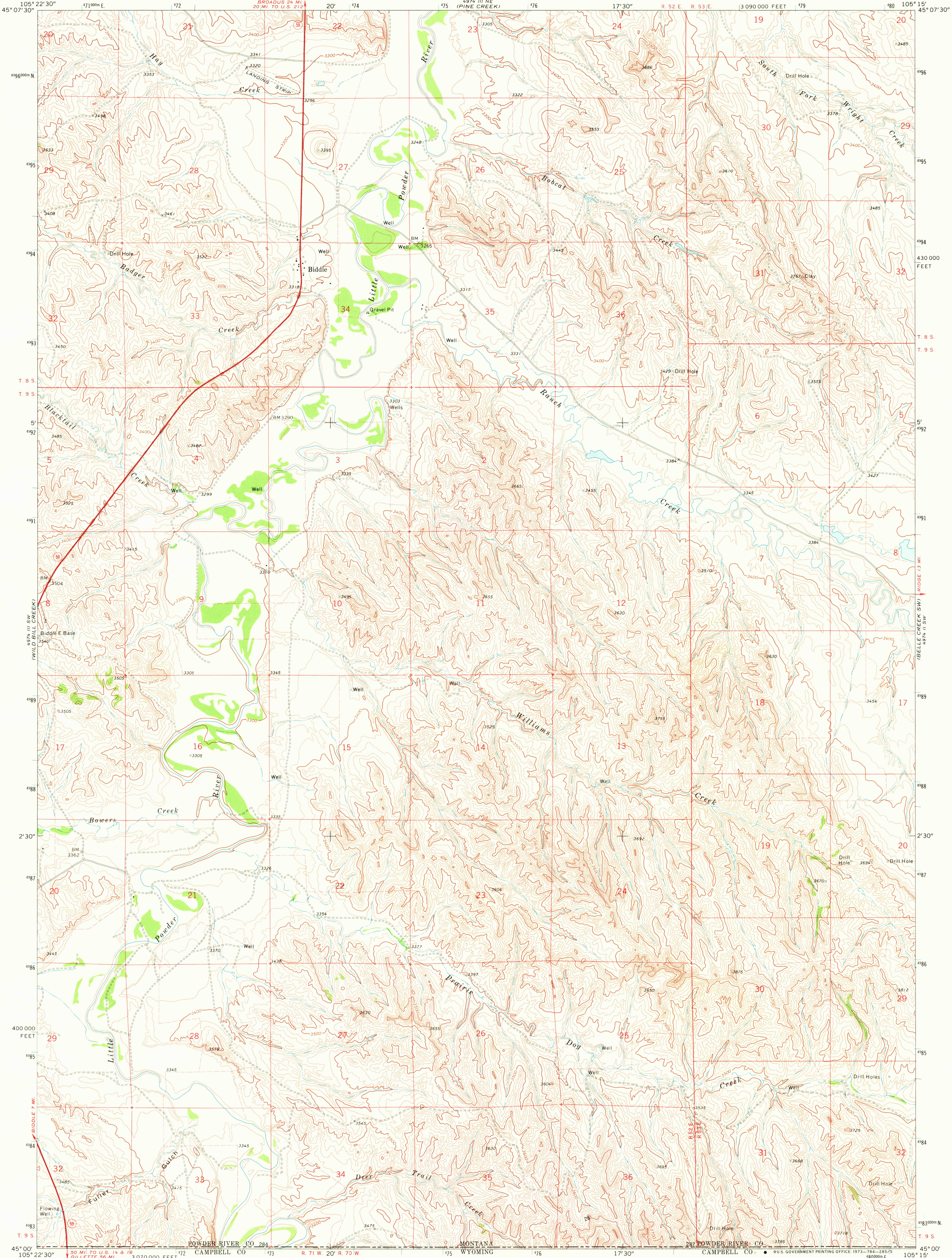


UNITED STATES
DEPARTMENT OF THE INTERIOR
GEOLOGICAL SURVEY

BIDDLE QUADRANGLE
MONTANA-WYOMING
7.5 MINUTE SERIES (TOPOGRAPHIC)



Mapped, edited, and published by the Geological Survey

Control by USGS and USC&GS

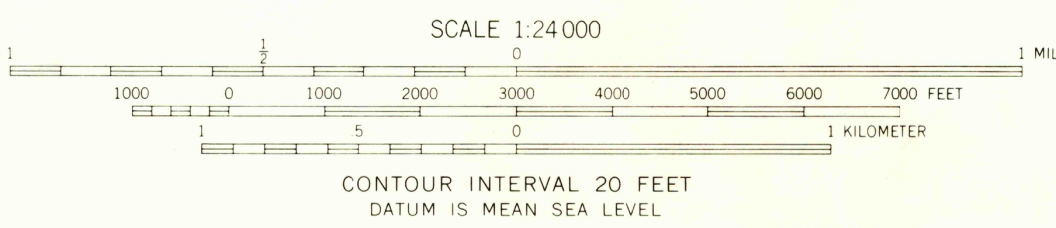
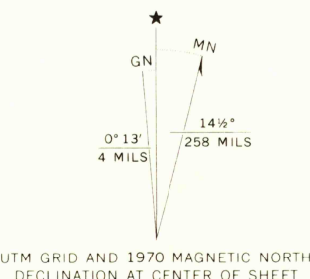
Topography by photogrammetric methods from aerial photographs taken 1969. Field checked 1970

Polyconic projection, 1927 North American datum

10,000-foot grid based on Montana coordinate system, south zone

1000-meter Universal Transverse Mercator grid ticks, zone 13, shown in blue

Fine red dashed lines indicate selected fence lines



ROAD CLASSIFICATION		
Primary highway, hard surface	Light-duty road, hard or improved surface	
Secondary highway, hard surface	Unimproved road	
Interstate Route	U. S. Route	State Route

OCT 2 1973
BIDDLE, MONT.-WYO.
N4500-W10515/7.5

1970

AMS 4974 III SE-SERIES V894

THIS MAP COMPLIES WITH NATIONAL MAP ACCURACY STANDARDS
FOR SALE BY U. S. GEOLOGICAL SURVEY, DENVER, COLORADO 80225, OR WASHINGTON, D. C. 20242
A FOLDER DESCRIBING TOPOGRAPHIC MAPS AND SYMBOLS IS AVAILABLE ON REQUEST

RETURN TO:
USGS NMD HISTORICAL MAP ARCHIVES

Dingerman
3500
50/plate