

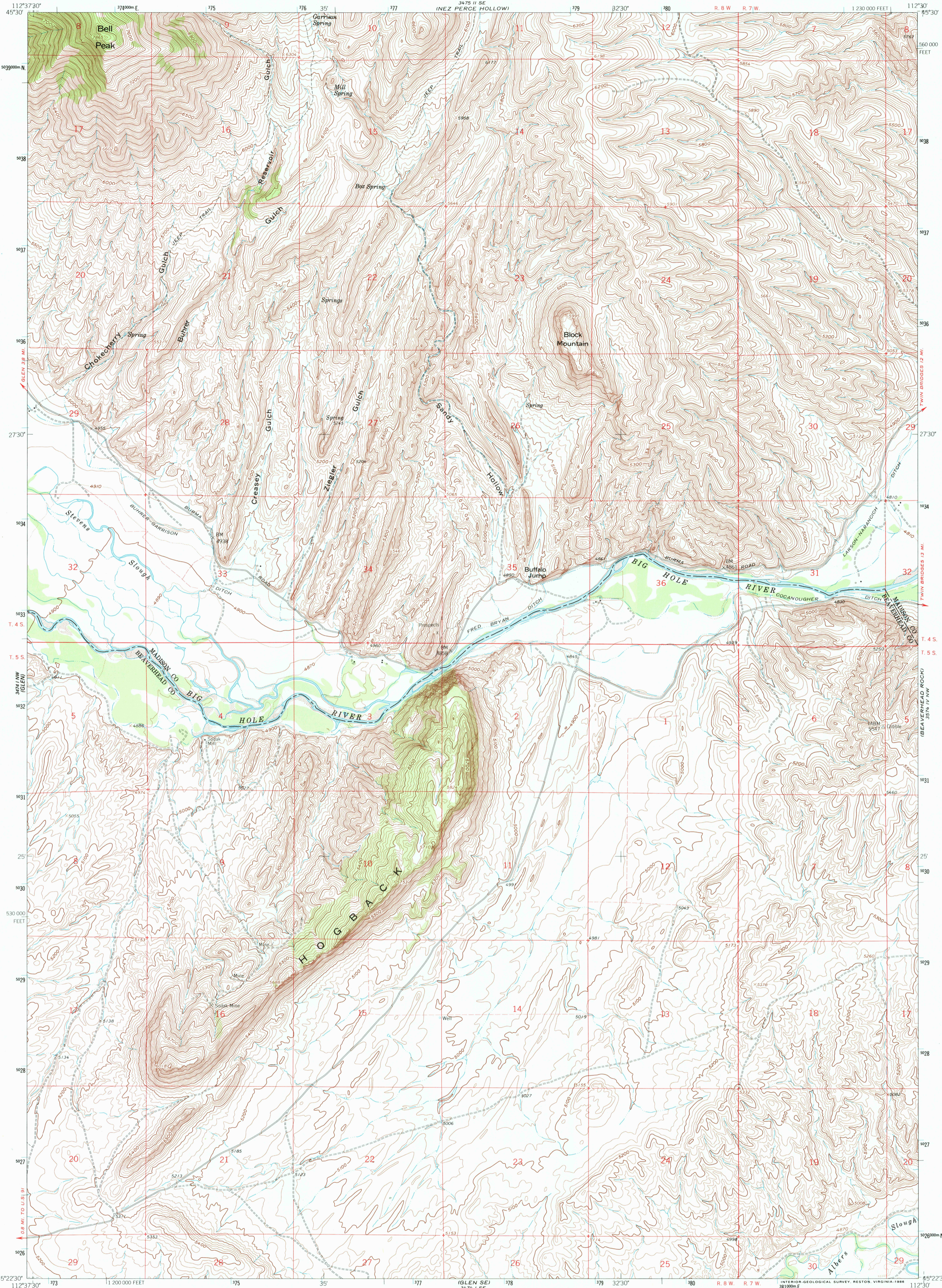
372° 3' W
(CARLS GULCH)



U.S. DEPARTMENT OF THE INTERIOR
U.S. GEOLOGICAL SURVEY

BLOCK MOUNTAIN QUADRANGLE
MONTANA
7.5 MINUTE SERIES (TOPOGRAPHIC)

372° 3' W
(TWIN BRIDGES SW)



RECEIVED
AUG 31 2001

U.S. GEOLOGICAL SURVEY
STORICAL MAP ARCHIVES

372° 3' W
(BEAVERHEAD ROCK SW)

Maped, edited, and published by the Geological Survey
as part of the Department of the Interior program
for the development of the Missouri River Basin

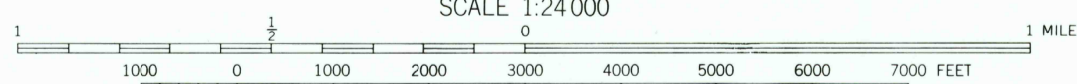
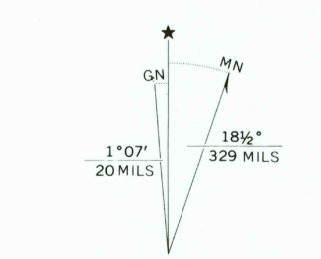
Control by USGS and USC&GS

Topography by photogrammetric methods from aerial
photographs taken 1959. Field checked 1960

Polyconic projection. 1927 North American Datum
10,000-foot grid based on Montana coordinate system, south zone
1000-meter Universal Transverse Mercator grid ticks,
zone 12, shown in blue

Fine red dashed lines indicate selected fence and field lines where
generally visible on aerial photographs. This information is unchecked

To place on the predicted North American Datum 1983
move the projection lines 11 meters north and
67 meters east as shown by dashed corner ticks



SCALE 1:24,000
CONTOUR INTERVAL 20 FEET
DOTTED LINES REPRESENT 10 FOOT CONTOURS
NATIONAL GEODETIC VERTICAL DATUM OF 1929



ROAD CLASSIFICATION
Light-duty ————— Unimproved dirt —————

BLOCK MOUNTAIN, MONT.
45112-D5-TF-024

1960

DMA 3474 1 NE-SERIES V894

THIS MAP COMPLIES WITH NATIONAL MAP ACCURACY STANDARDS
FOR SALE BY U.S. GEOLOGICAL SURVEY, P.O. BOX 25286, DENVER, COLORADO 80225
A FOLDER DESCRIBING TOPOGRAPHIC MAPS AND SYMBOLS IS AVAILABLE ON REQUEST

