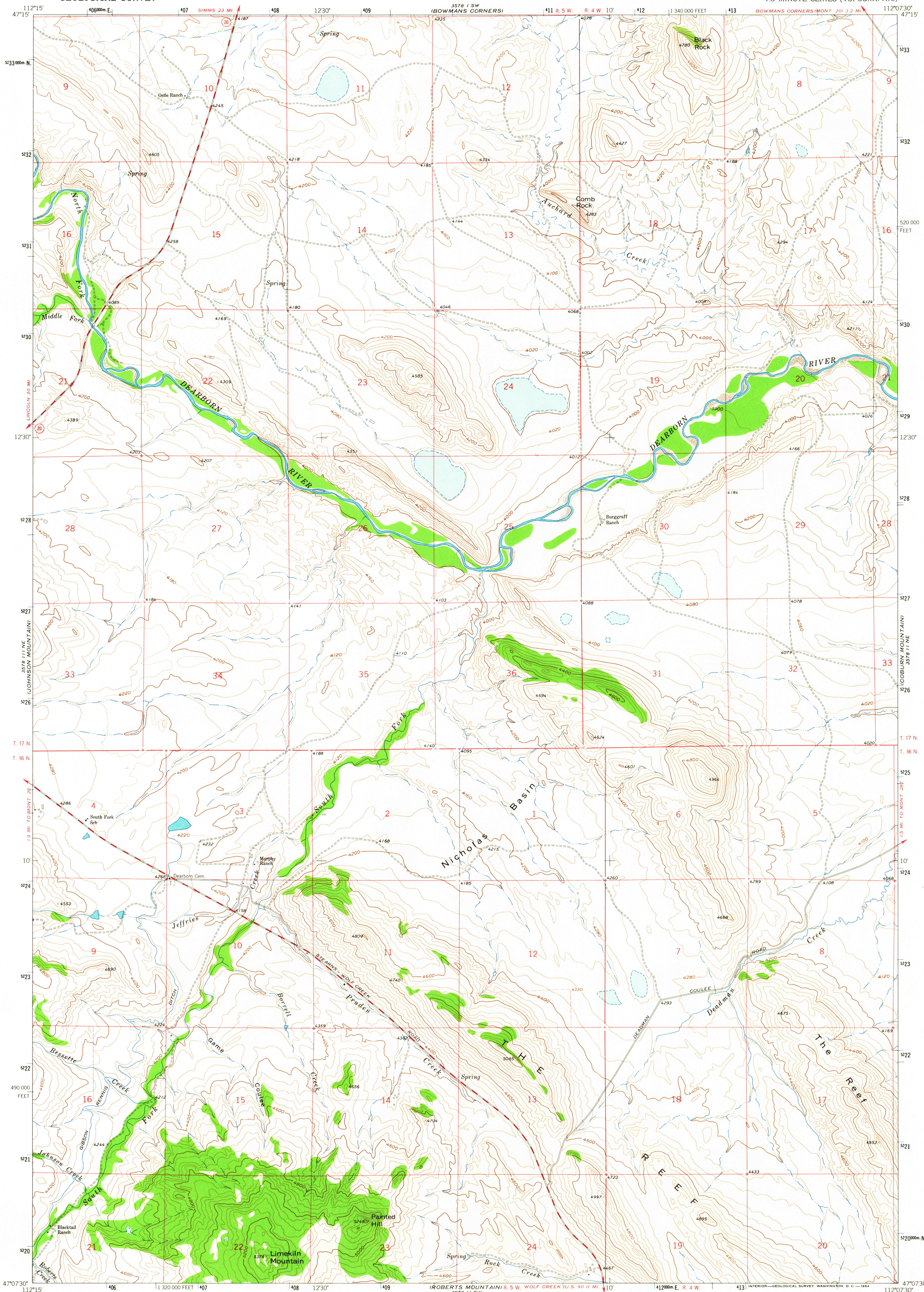


UNITED STATES
DEPARTMENT OF THE INTERIOR
GEOLOGICAL SURVEY

COMB ROCK QUADRANGLE
MONTANA-LEWIS AND CLARK CO.
7.5 MINUTE SERIES (TOPOGRAPHIC)



Maped, edited, and published by the Geological Survey

Control by USGS and USC&GS

Topography by photogrammetric methods from aerial

photographs taken 1956. Field checked 1961

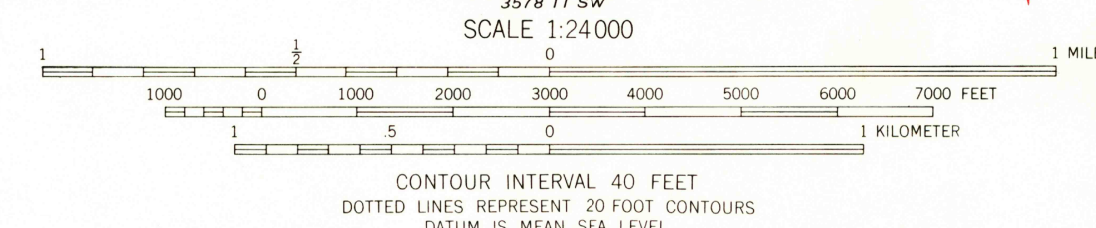
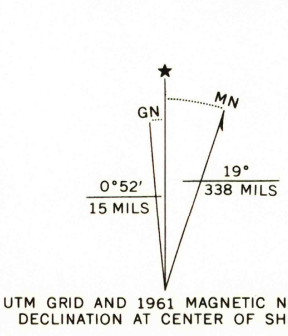
Polyconic projection. 1927 North American datum

10,000 foot grid based on Montana coordinate system, central zone

1000-meter Universal Transverse Mercator grid ticks,

zone 12, shown in blue

Fine red dashed lines indicate selected fence lines



ROAD CLASSIFICATION
Medium-duty ——— Light-duty ———
Unimproved dirt =====
State Route ○

COMB ROCK, MONT.
N4705-W112075/75

1961

AMS 3578 11 NW-SERIES V894

USGS
Historical File
Topographic Division

U.S.G.S.
FILE COPY
TOPOGRAPHIC DIVISION

2685

MAY 22 1964