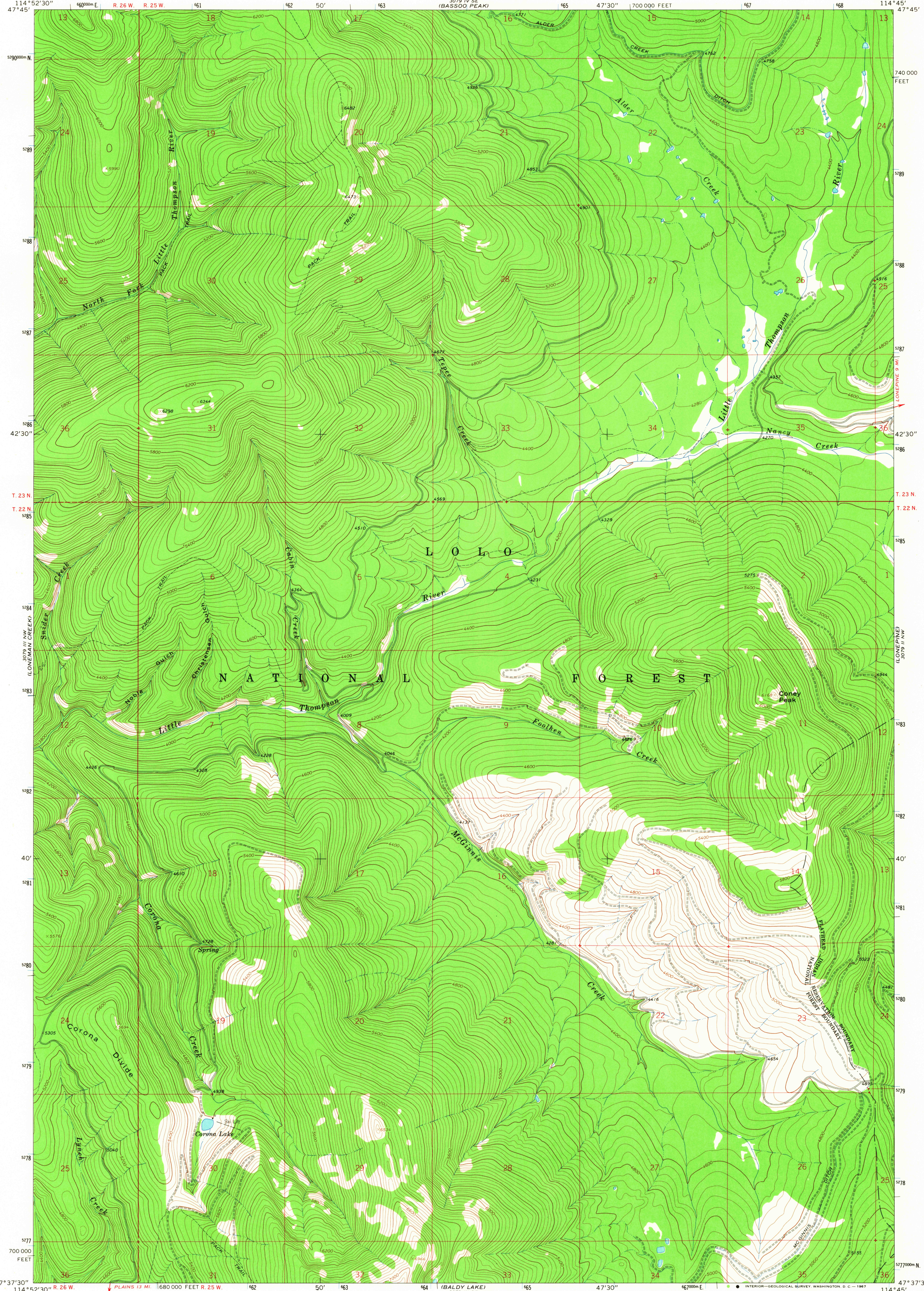


COOK MOUNTAIN
3079 IV SE
3079 III NW

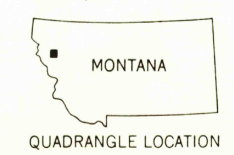
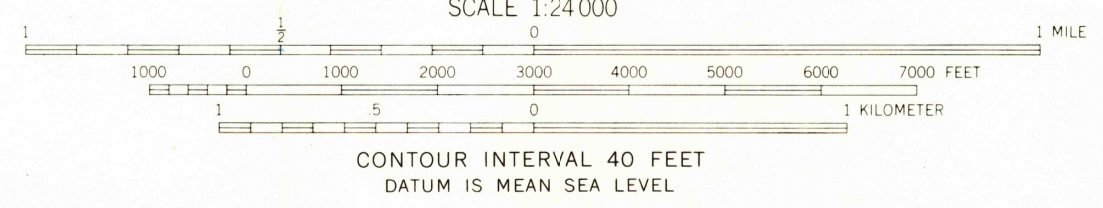
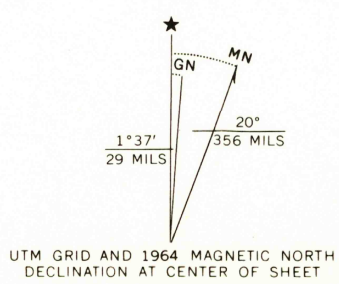
UNITED STATES
DEPARTMENT OF THE INTERIOR
GEOLOGICAL SURVEY

CONEY PEAK QUADRANGLE
MONTANA—SANDERS CO.
7.5 MINUTE SERIES (TOPOGRAPHIC)

3079 IV SE
3079 III NW
WILL POCKET CREEK



Mapped, edited, and published by the Geological Survey
Control by USGS and USC&GS
Topography by photogrammetric methods from aerial
photographs taken 1964. Field checked 1964
Polyconic projection. 1927 North American datum
10,000-foot grid based on Montana coordinate system,
central zone
1000-meter Universal Transverse Mercator grid ticks,
zone 11, shown in blue



ROAD CLASSIFICATION
Light duty ————— Unimproved dirt =====

CONEY PEAK, MONT.
N4737.5—W11445/7.5

1964

AMS 3079 III NE—SERIES V894

USGS
Historical File
Topographic Division

2635
OCT 11 1967