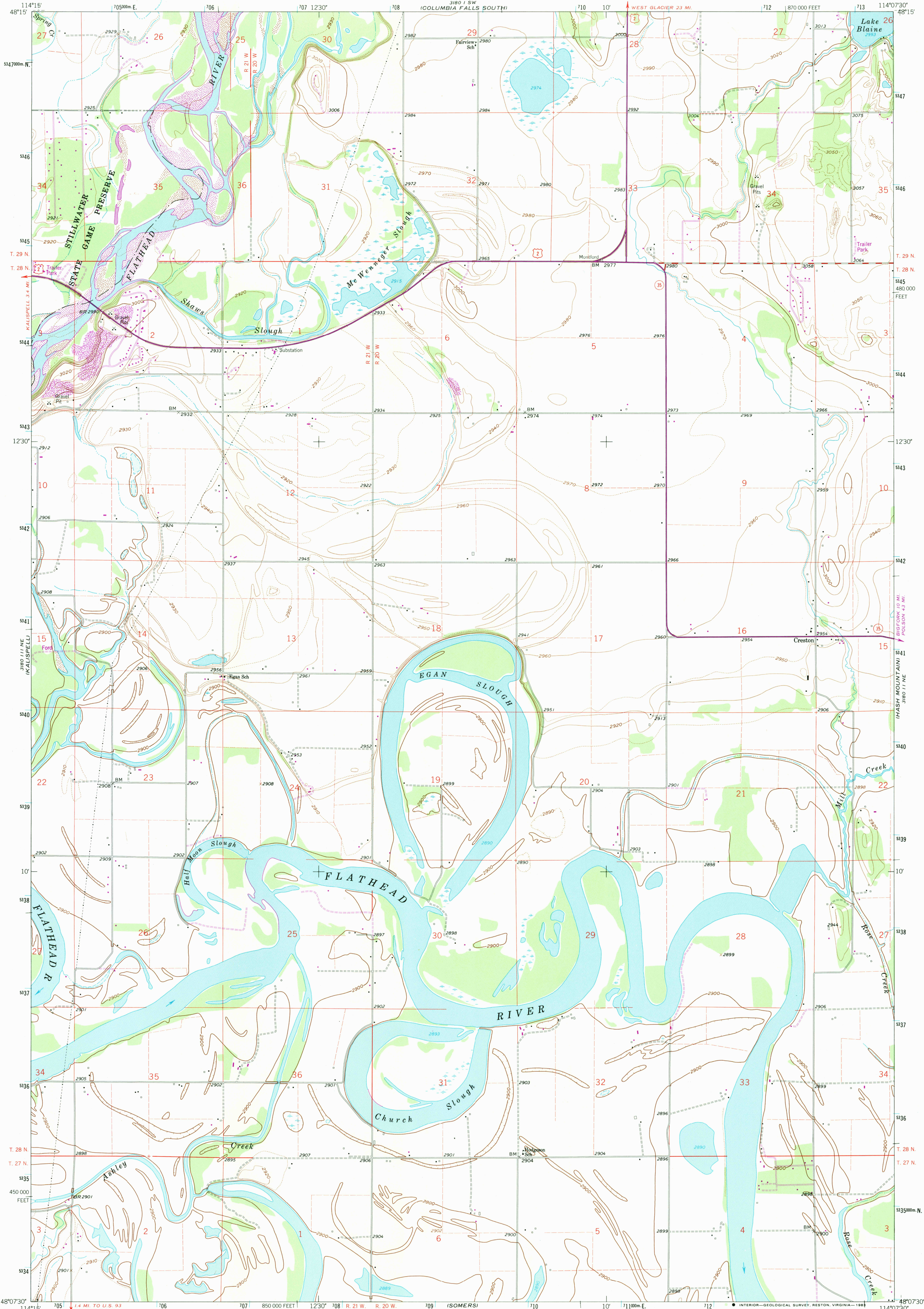


UNITED STATES
DEPARTMENT OF THE INTERIOR
GEOLOGICAL SURVEY

CRESTON QUADRANGLE
MONTANA-FLATHEAD CO.
7.5 MINUTE SERIES (TOPOGRAPHIC)



Mapped, edited, and published by the Geological Survey

Control by USGS and NOS/NOAA

Topography by photogrammetric methods from aerial

photographs taken 1956. Field checked 1962

Polyconic projection. 1927 North American datum

10,000-foot grid based on Montana coordinate system, north zone

1000-meter Universal Transverse Mercator grid ticks,

zone 11, shown in blue

Fine red dashed lines indicate selected fence lines

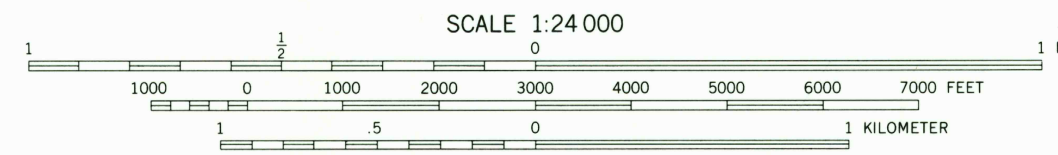
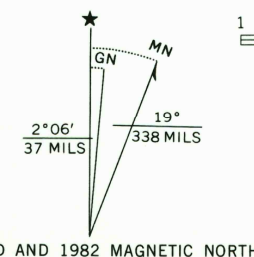
There may be private inholdings within the boundaries

of the National or State reservations shown on this map

To place on the predicted North American Datum 1983

move the projection lines 12 meters north and

71 meters east as shown by dashed corner ticks



CONTOUR INTERVAL 20 FEET
DOTTED LINES REPRESENT 10-FOOT CONTOURS
NATIONAL GEODETIC VERTICAL DATUM OF 1929



ROAD CLASSIFICATION
Medium-duty ——— Light-duty ———
Unimproved dirt ———
U.S. Route ——— State Route ———
Primary highway,
hard surface ———

CRESTON, MONT.
N4807.5-W11407.5/7.5

1962
PHOTOREVISED 1982
DMA 3180 11 NW-SERIES V894

THIS MAP COMPLIES WITH NATIONAL MAP ACCURACY STANDARDS
FOR SALE BY U. S. GEOLOGICAL SURVEY, DENVER, COLORADO 80225, OR RESTON, VIRGINIA 22092
A FOLDER DESCRIBING TOPOGRAPHIC MAPS AND SYMBOLS IS AVAILABLE ON REQUEST

Revisions shown in purple and woodland
compiled from aerial photographs taken 1979
and other source data. This information
not field checked. Map edited 1982

RETURN TO:
USGS NMD HISTORICAL MAP ARCHIVES

FEB 22 1984