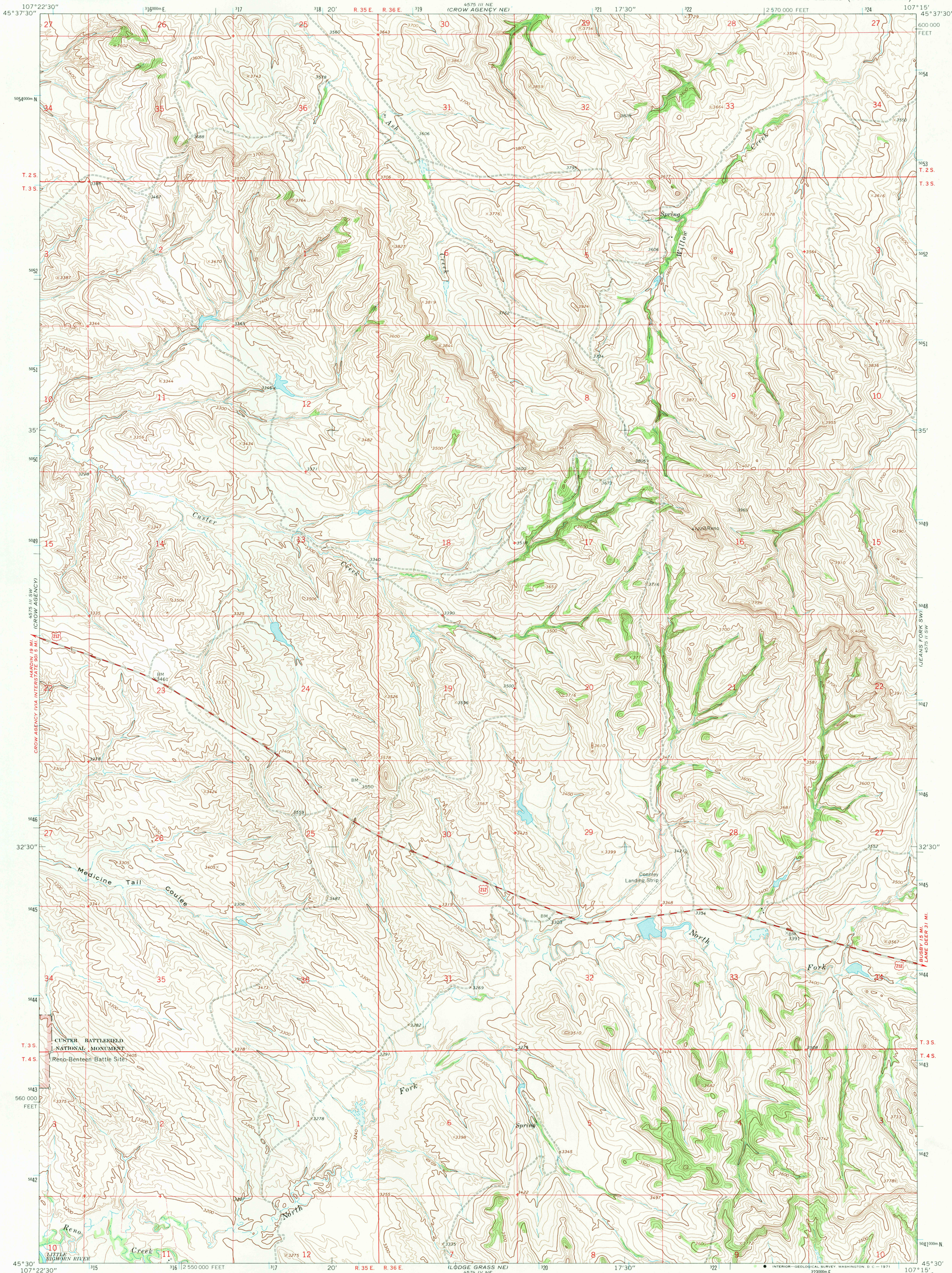
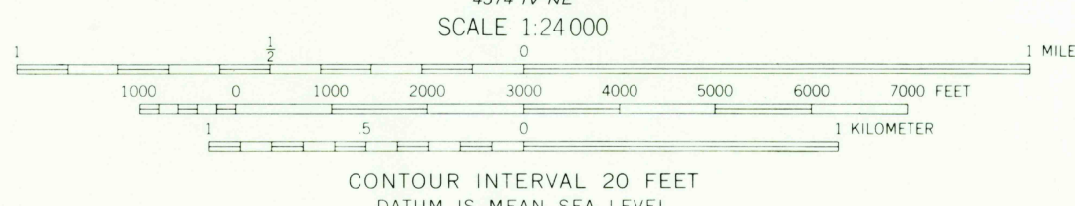
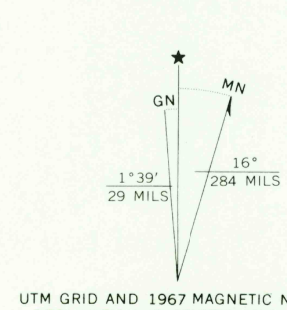


UNITED STATES
DEPARTMENT OF THE INTERIOR
GEOLOGICAL SURVEY

CROW AGENCY SE QUADRANGLE
MONTANA—BIG HORN CO.
7.5 MINUTE SERIES (TOPOGRAPHIC)



Mapped, edited, and published by the Geological Survey
Control by USGS and USC&GS
Topography by photogrammetric methods from aerial
photographs taken 1966. Field checked 1967
Polyconic projection. 1927 North American datum
10,000-foot grid based on Montana coordinate system,
south zone
1000-meter Universal Transverse Mercator grid ticks,
zone 13, shown in blue
Fine red dashed lines indicate selected fence lines
Entire area lies within the boundary of the Crow
Indian Reservation



ROAD CLASSIFICATION
Medium-duty ——— Unimproved dirt ———
U.S. Route

U.S.G.S.
FILE COPY
TOPOGRAPHIC DIVISION

CROW AGENCY SE, MONT.
N4530—W10715/7.5

1967

AMS 4575 III SE—SERIES V894

THIS MAP COMPLIES WITH NATIONAL MAP ACCURACY STANDARDS
FOR SALE BY U.S. GEOLOGICAL SURVEY, DENVER, COLORADO 80225, OR WASHINGTON, D.C. 20242
A FOLDER DESCRIBING TOPOGRAPHIC MAPS AND SYMBOLS IS AVAILABLE ON REQUEST

USGS
Historical File
Topographic Division

JUN 18 1971