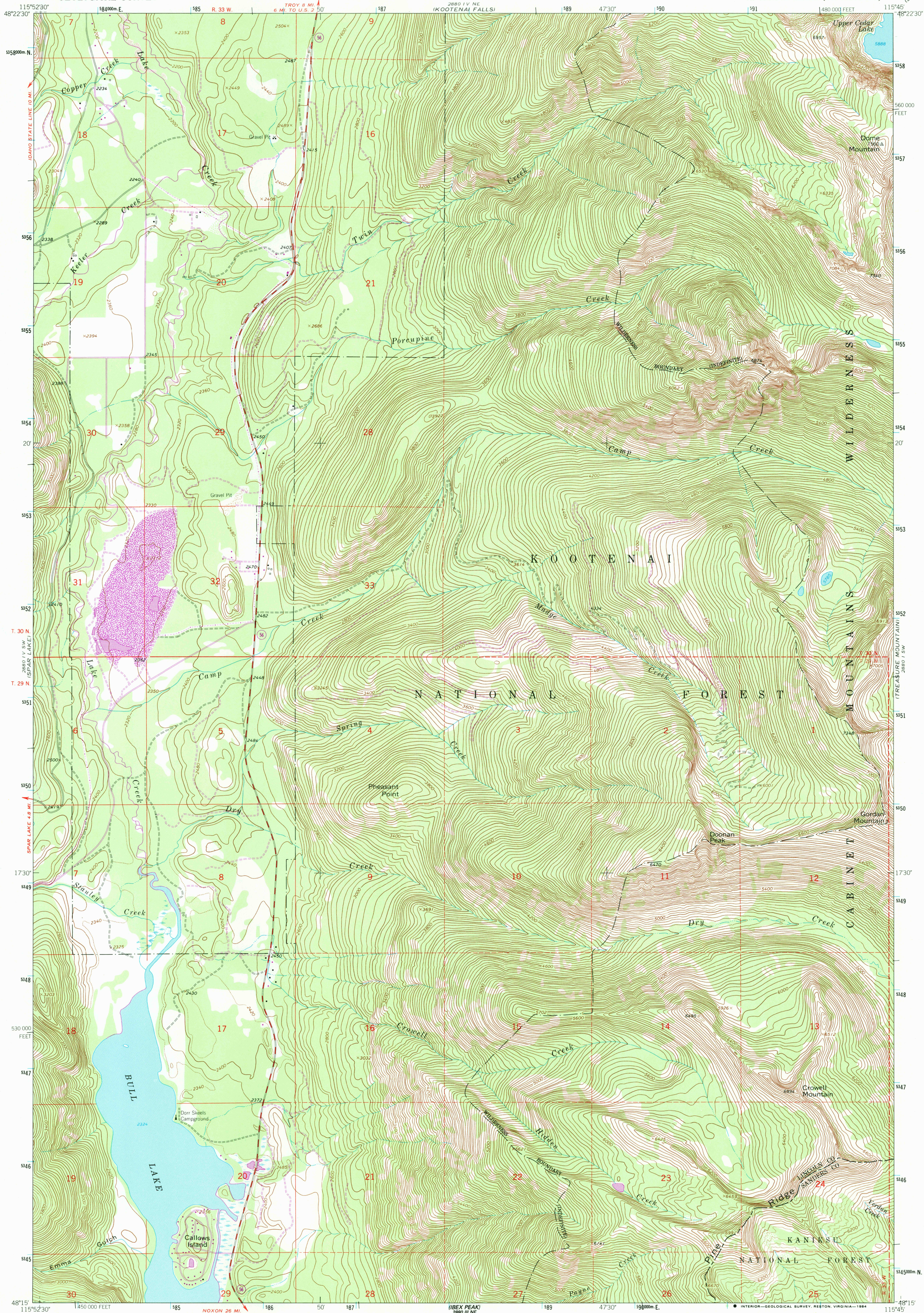


UNITED STATES
DEPARTMENT OF THE INTERIOR
GEOLOGICAL SURVEY

CROWELL MOUNTAIN QUADRANGLE
MONTANA
7.5 MINUTE SERIES (TOPOGRAPHIC)



Mapped, edited, and published by the Geological Survey

Control by USGS, NOS/NOAA, and U.S. Forest Service

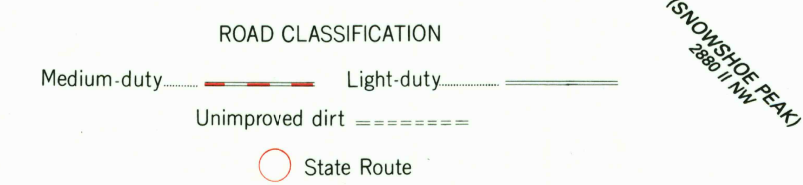
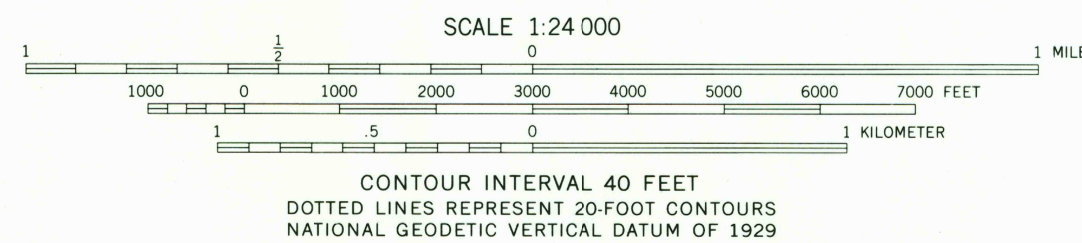
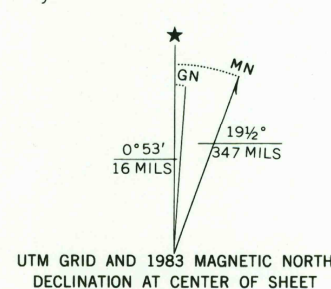
Topography by photogrammetric methods from aerial photographs taken 1962. Field checked 1963

Polyconic projection 1927 North American Datum
10,000 foot grid based on Montana coordinate system, north zone
1000-meter Universal Transverse Mercator grid ticks, zone 11, shown in blue

Where omitted, land lines have not been established

There may be private inholdings within the boundaries of the National or State reservations shown on this map

To place on the predicted North American Datum 1983 move the projection lines 12 meters north and 75 meters east as shown by dashed corner ticks



CROWELL MOUNTAIN, MONT.
48115-C7-TF-024

1963
PHOTOREVISED 1983
DMA 2880 IV SE-SERIES V894

THIS MAP COMPLIES WITH NATIONAL MAP ACCURACY STANDARDS
FOR SALE BY U.S. GEOLOGICAL SURVEY, DENVER, COLORADO 80225, OR RESTON, VIRGINIA 22092
A FOLDER DESCRIBING TOPOGRAPHIC MAPS AND SYMBOLS IS AVAILABLE ON REQUEST

Revisions shown in purple and woodland compiled from aerial photographs taken 1982 and other source data. Partial field check by U.S. Forest Service. Map edited 1983

RETURN TO:
USGS AND HISTORICAL MAP ARCHIVES