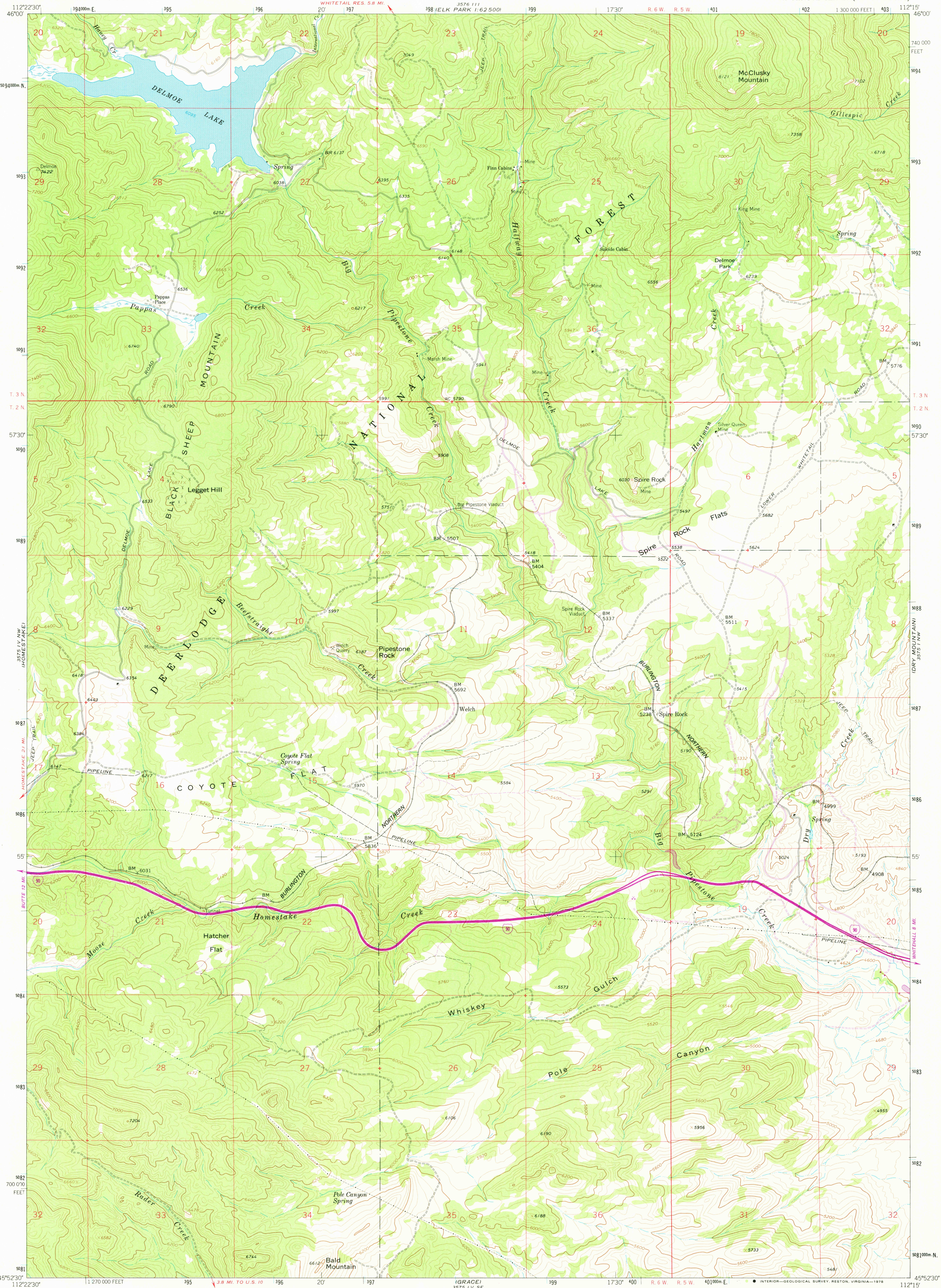


UNITED STATES
DEPARTMENT OF THE INTERIOR
GEOLOGICAL SURVEY

DELMOE LAKE QUADRANGLE
MONTANA-JEFFERSON CO.
7.5 MINUTE SERIES (TOPOGRAPHIC)



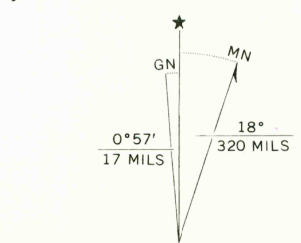
Mapped, edited, and published by the Geological Survey

Control by USGS, NOS/NOAA and U.S. Forest Service

Topography by photogrammetric methods from aerial photographs taken 1960. Field checked 1963

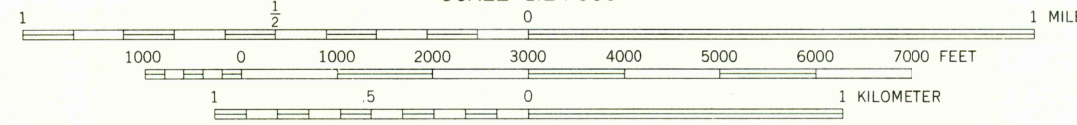
Polyconic projection. 1927 North American datum. 10,000-foot grid based on Montana coordinate system, south zone. 1000-meter Universal Transverse Mercator grid ticks, zone 12, shown in blue.

Revisions shown in purple compiled from aerial photographs taken 1976. Map edited 1978. This information not field checked.



UTM GRID AND 1978 MAGNETIC NORTH DECLINATION AT CENTER OF SHEET

SCALE 1:24 000



CONTOUR INTERVAL 40 FEET
NATIONAL GEODETIC VERTICAL DATUM OF 1929



QUADRANGLE LOCATION

ROAD CLASSIFICATION

Light-duty ————— Unimproved dirt —————

Heavy-duty —————

Interstate Route

USGS
Historical File
Topographic Division

DELMOE LAKE, MONT.
N4552.5-W11215.7/5

1963
PHOTOREVISED 1978
AMS 3575 IV NE-SERIES V894

JAN 05 1979

2675