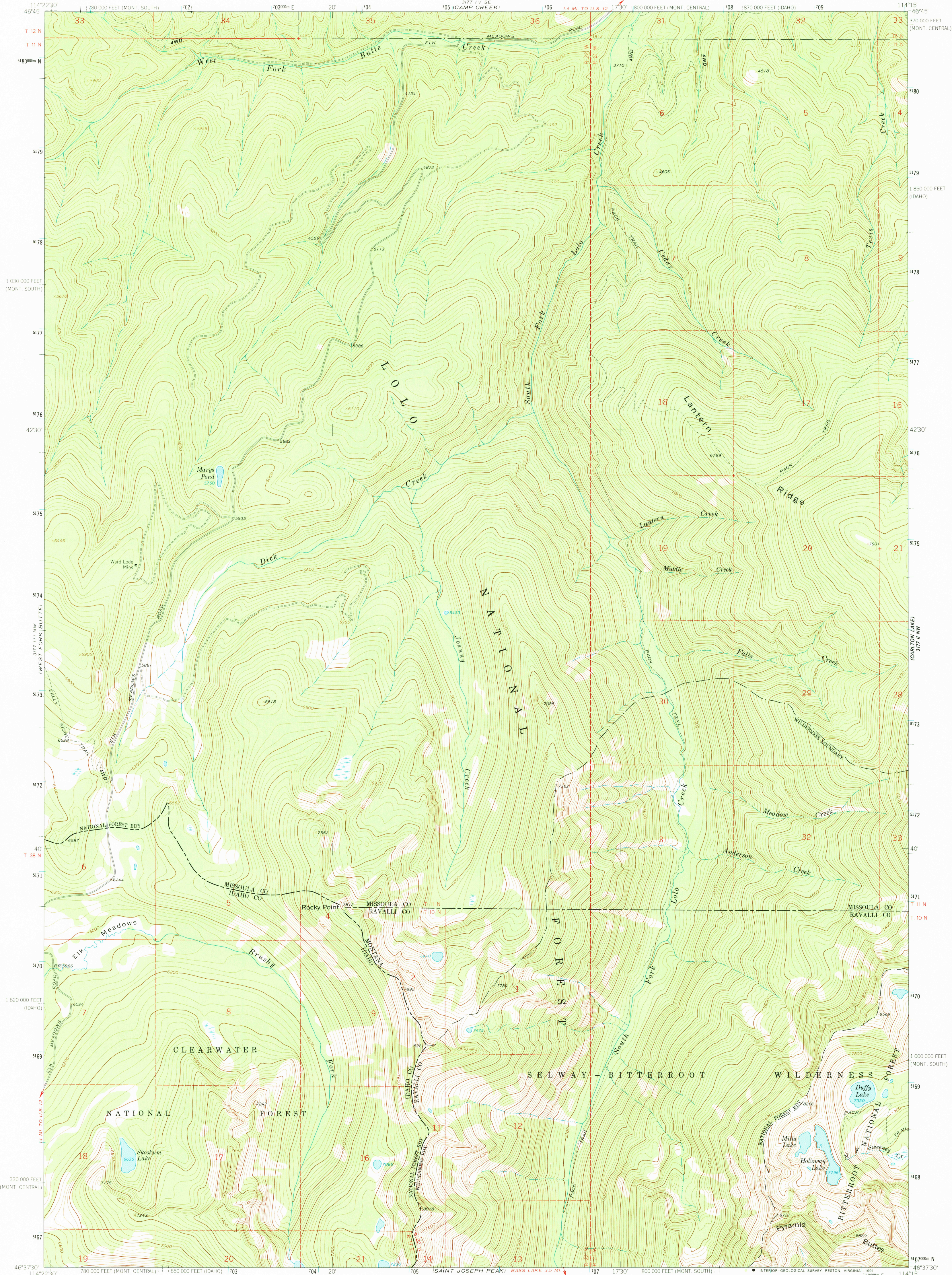


UNITED STATES
DEPARTMENT OF THE INTERIOR
GEOLOGICAL SURVEY

DICK CREEK QUADRANGLE
MONTANA-IDAHO
7.5 MINUTE SERIES (TOPOGRAPHIC)



Mapped, edited, and published by the Geological Survey

Control by USGS and NOS/NOAA

Topography by photogrammetric methods from aerial photographs taken 1963. Field checked 1964.

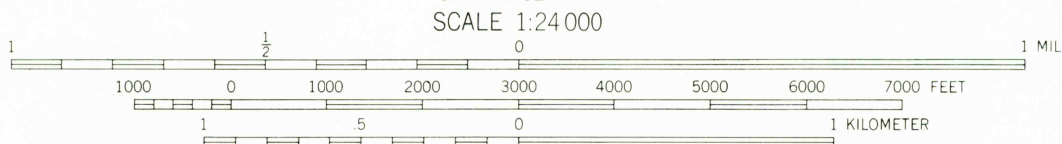
Polyconic projection, 1927 North American Datum 10,000-foot grid based on Montana coordinate system, central and south zones and Idaho coordinate system, west zone

1000-meter Universal Transverse Mercator grid ticks, zone 11, shown in blue

The difference between 1927 North American Datum and North American Datum of 1983 (NAD 83) for 7.5 minute intersections is given in USGS Bulletin 1875. The NAD 83 is shown by dashed corner ticks

There may be private inholdings within the boundaries of the National or State reservations shown on this map

Where omitted, land lines have not been established



CONTOUR INTERVAL 40 FEET
NATIONAL GEODETIC VERTICAL DATUM OF 1929

THIS MAP COMPLIES WITH NATIONAL MAP ACCURACY STANDARDS
FOR SALE BY U.S. GEOLOGICAL SURVEY
DENVER, COLORADO 80225, OR RESTON, VIRGINIA 22092
A FOLDER DESCRIBING TOPOGRAPHIC MAPS AND SYMBOLS IS AVAILABLE ON REQUEST



ROAD CLASSIFICATION
Light-duty ————— Unimproved dirt =====

DICK CREEK, MONT.-IDAHO
46114-F3-TF-024

1964

DMA 3177 11 NE-SERIES V894

