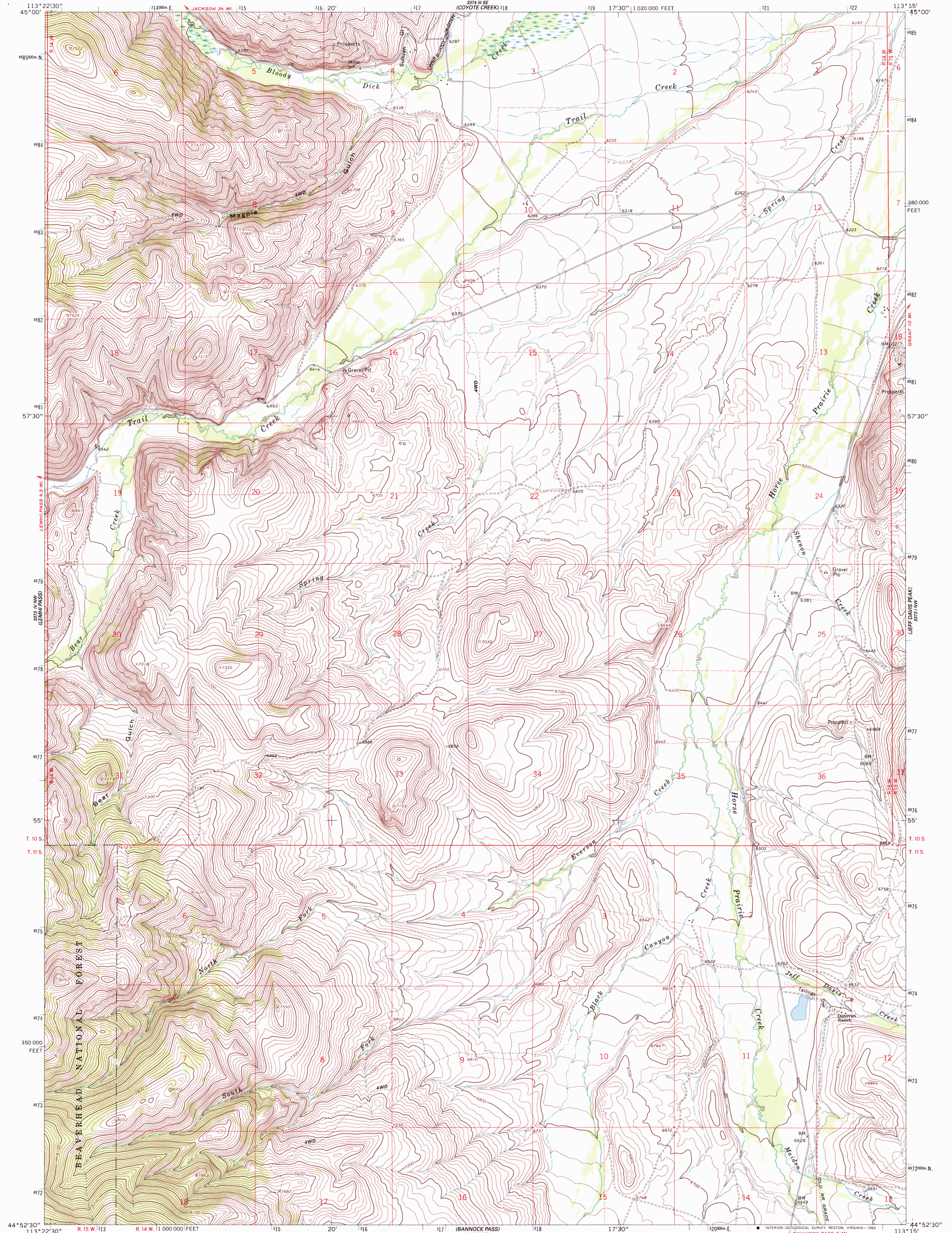


24° 18' N
113° 22' 30" W
CITY CREEK

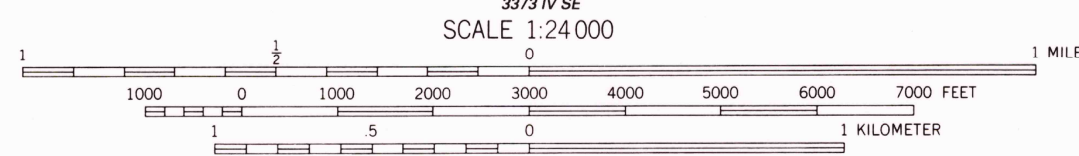
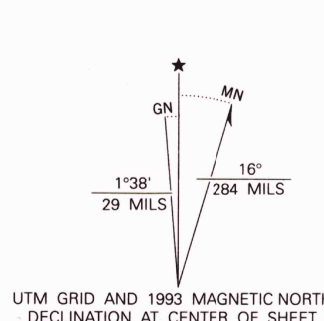
UNITED STATES
DEPARTMENT OF THE INTERIOR
GEOLOGICAL SURVEY

EVERSON CREEK QUADRANGLE
MONTANA-BEAVERHEAD CO.
7.5 MINUTE SERIES (TOPOGRAPHIC)

37° 18' N
113° 15' W
BACHELOR MOUNTAIN



Produced by the United States Geological Survey
Control by USGS and NOS/NOAA
Compiled from aerial photographs taken 1964
Field checked 1965
1927 North American Datum (NAD 27). Projection and
10,000-foot ticks: Montana Coordinate System, south zone
(Lambert Conformal Conic)
Blue 1000-meter Universal Transverse Mercator ticks, zone 12
North American Datum of 1983 (NAD 83) is shown by dashed
corner ticks. The values of the shift between NAD 27 and NAD 83
for 7.5-minute intersections are given in USGS Bulletin 1875
There may be private inholdings within the boundaries of the
National or State reservations shown on this map
Fine red dashed lines indicate selected fence lines
Where omitted, land lines have not been established



CONTOUR INTERVAL 20 FEET
NATIONAL GEODETIC VERTICAL DATUM OF 1929



ROAD CLASSIFICATION
Light-duty ————— Unimproved dirt - - - - -

EVERSON CREEK, MONT.
44113-H3-TF-024

1965
DMA 3373 IV NE-SERIES V894

