

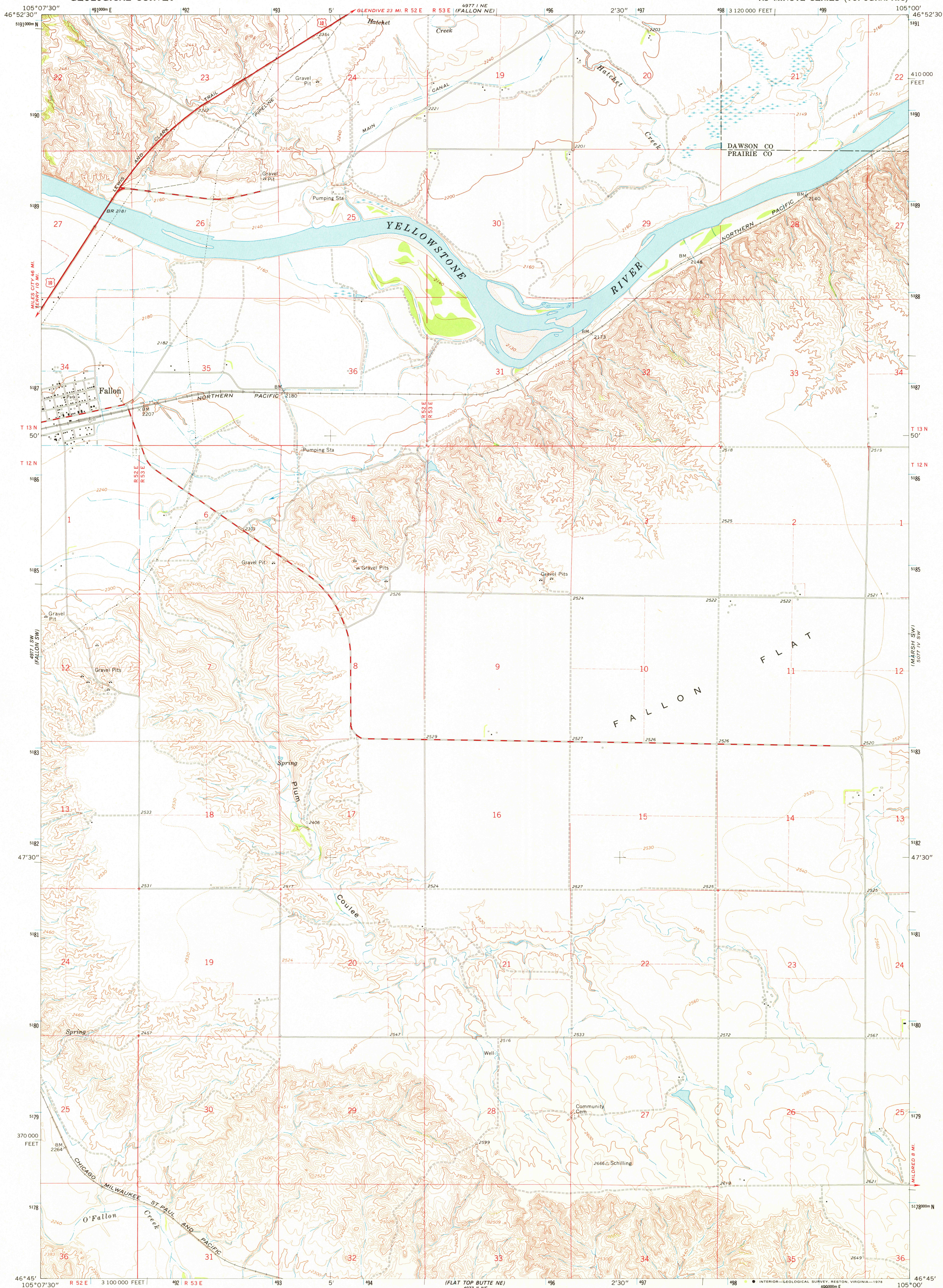
4874 NW
SECTION 10
T 13 N
R 52 E

UNITED STATES
DEPARTMENT OF THE INTERIOR
GEOLOGICAL SURVEY



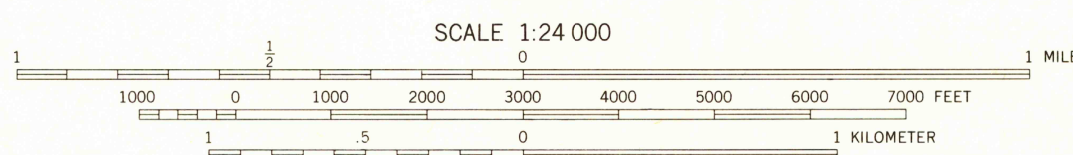
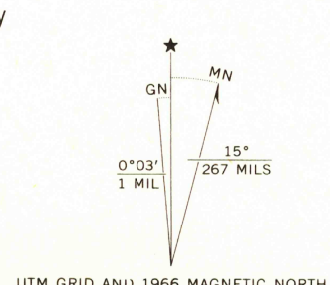
FALLON QUADRANGLE
MONTANA
7.5 MINUTE SERIES (TOPOGRAPHIC)

5077 NW
SECTION 10
T 13 N
R 52 E



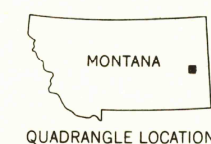
(FLAT TOP BUTTE)
4977 NW

Mapped, edited, and published by the Geological Survey as part of the Department of the Interior program for the development of the Missouri River Basin Control by USGS and USC&GS
Topography by photogrammetric methods from aerial photographs taken 1965. Field checked 1966
Polyconic projection. 1927 North American datum 10,000-foot grid based on Montana coordinate system, central zone
1000-meter Universal Transverse Mercator grid ticks, zone 13, shown in blue
Fine red dashed lines indicate selected fence lines



SCALE 1:24 000
CONTOUR INTERVAL 20 FEET
DOTTED LINES REPRESENT 10-FOOT CONTOURS
NATIONAL GEODETIC VERTICAL DATUM OF 1929

THIS MAP COMPLIES WITH NATIONAL MAP ACCURACY STANDARDS
FOR SALE BY U. S. GEOLOGICAL SURVEY, DENVER, COLORADO 80225, OR RESTON, VIRGINIA 22092
A FOLDER DESCRIBING TOPOGRAPHIC MAPS AND SYMBOLS IS AVAILABLE ON REQUEST



ROAD CLASSIFICATION
Heavy-duty ——— Light-duty ———
Medium-duty ——— Unimproved dirt ———
U. S. Route

USGS
Historical File
Topographic Division

FALLON, MONT.
N4645-W10500/7.5

1966

AMS 4977 I SE—SERIES V894

MAR 19 1978

2900