

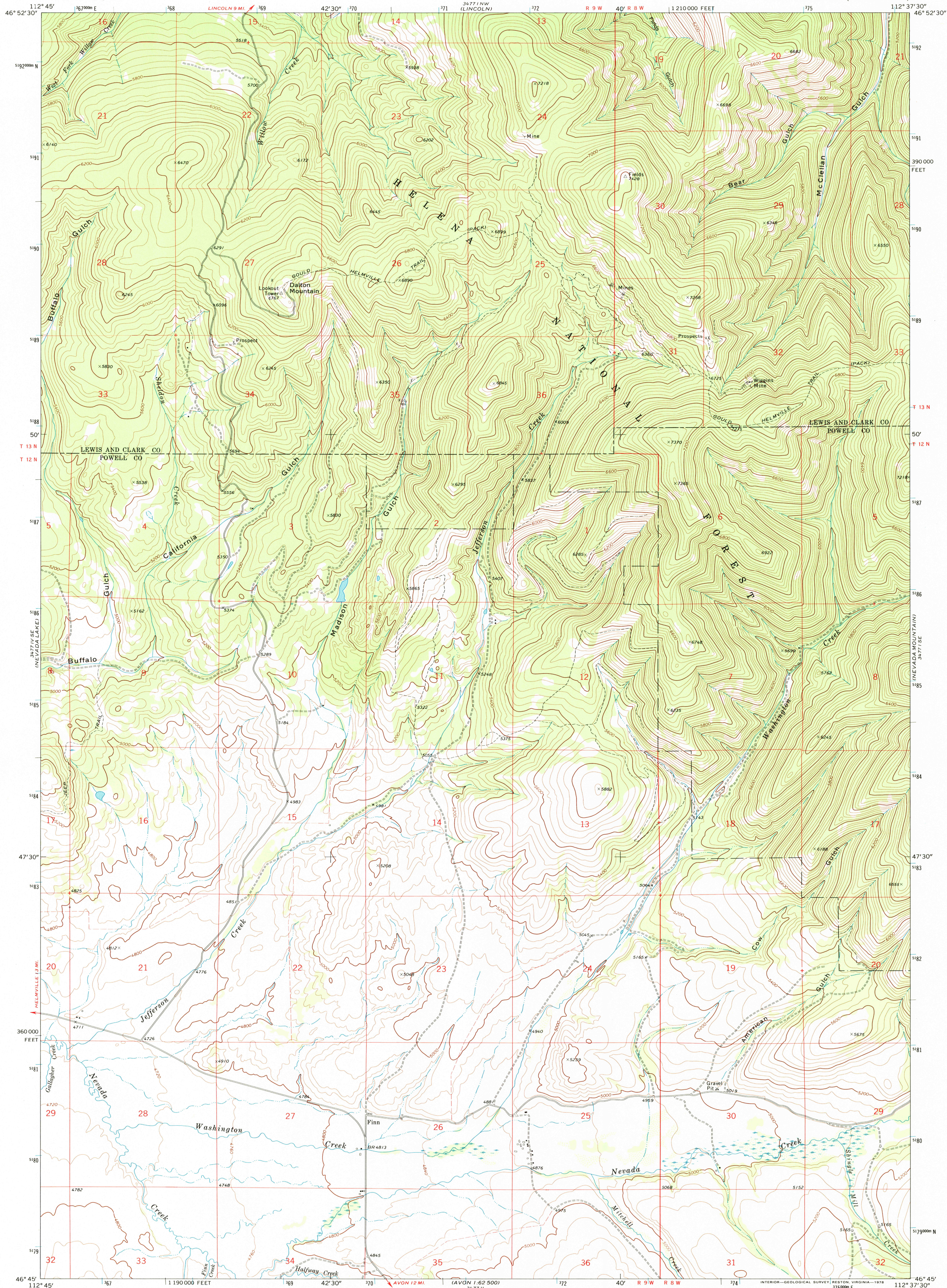
34771 NE
(MOOSE CREEK)



U.S. DEPARTMENT OF THE INTERIOR
U.S. GEOLOGICAL SURVEY

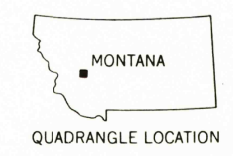
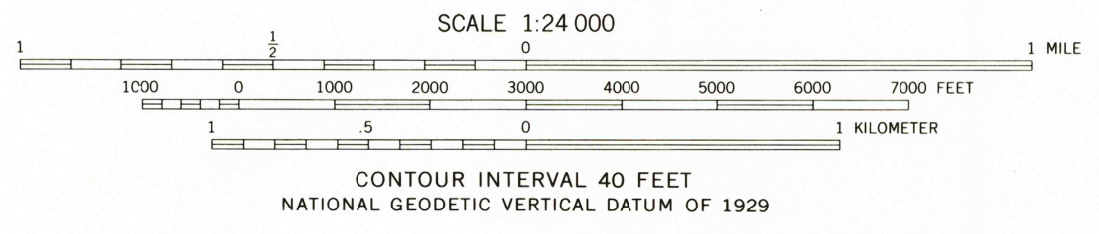
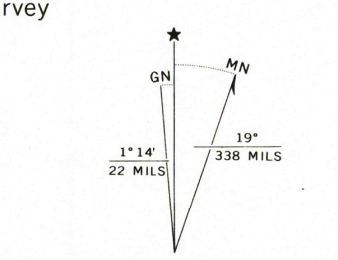
FINN QUADRANGLE
MONTANA
7.5 MINUTE SERIES (TOPOGRAPHIC)

34771 NE
(SWEDE GULCH)



34771 NE
(GARRISON 1:62,500)

Mapped, edited, and published by the Geological Survey
Control by USGS and USC&GS
Topography by photogrammetric methods from aerial
photographs taken 1967. Field checked 1968
Polyconic projection. 1927 North American datum
10,000-foot grid based on Montana coordinate system,
central zone
1000-meter Universal Transverse Mercator grid ticks,
zone 12, shown in blue
Fine red dashed lines indicate selected fence lines
There may be private inholdings within the boundaries of
the National or State reservations shown on this map



ROAD CLASSIFICATION
Light-duty road, all weather, Unimproved road, fair or dry
improved surface weather

RECEIVED
FEB 28 1999
FINN, MONT.
N4645-W11237.5/7.5
1968

THIS MAP COMPLIES WITH NATIONAL MAP ACCURACY STANDARDS
FOR SALE BY U.S. GEOLOGICAL SURVEY, P.O. BOX 25286, DENVER, COLORADO 80225
A FOLDER DESCRIBING TOPOGRAPHIC MAPS AND SYMBOLS IS AVAILABLE ON REQUEST

USGS NMD
HISTORICAL MAP ARCHIVES
AMS 34771 SW-SERIES V894

