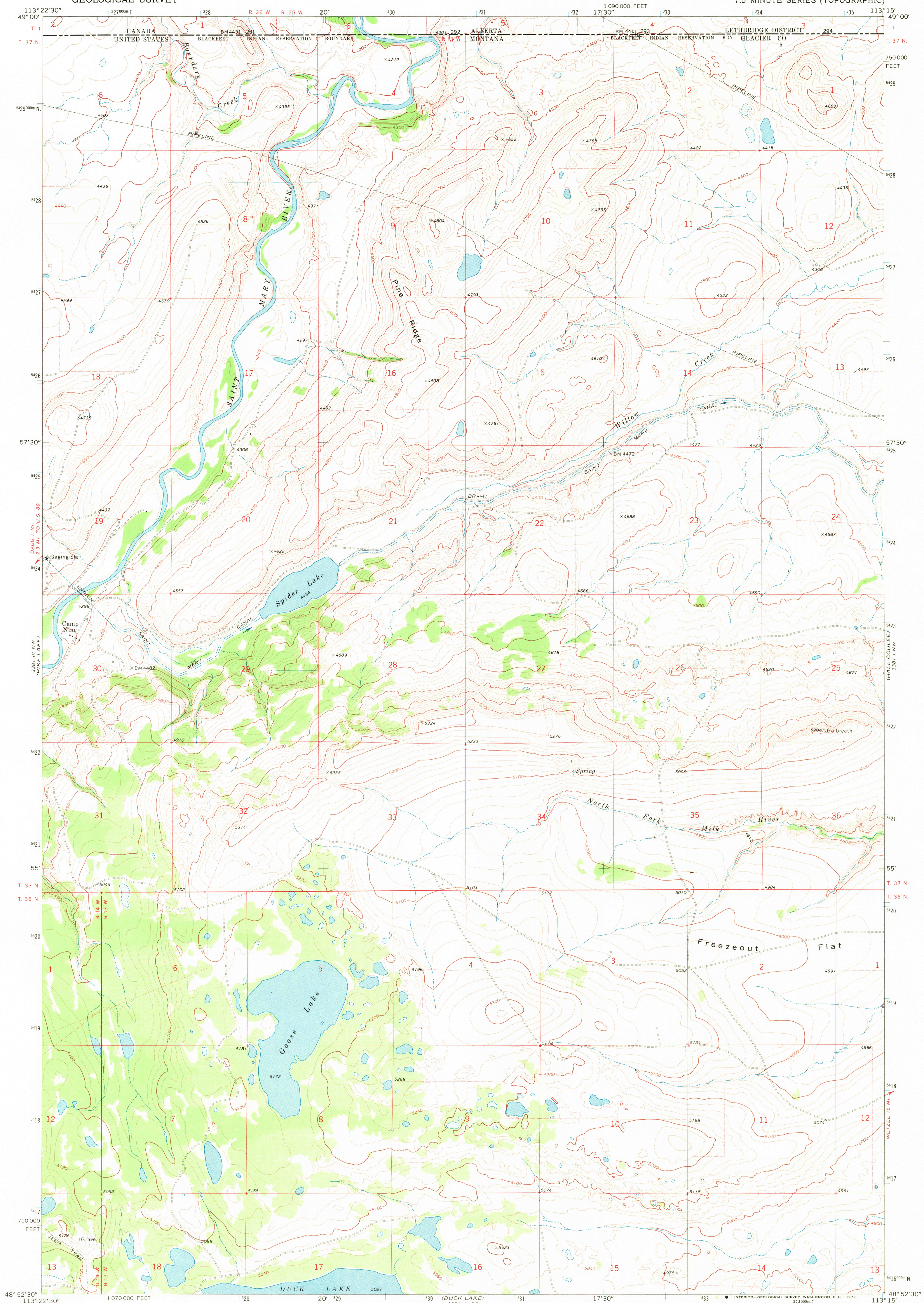
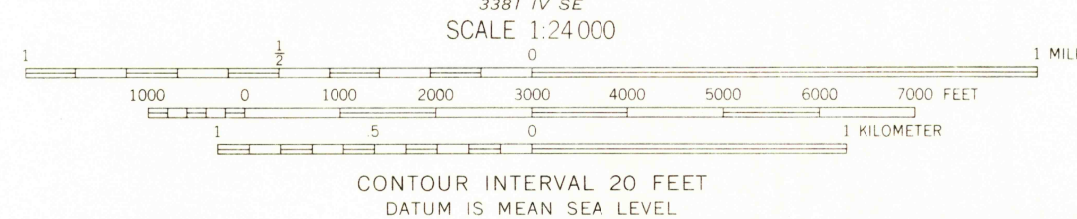
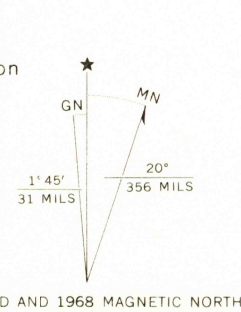


UNITED STATES
DEPARTMENT OF THE INTERIOR
GEOLOGICAL SURVEY

GOOSE LAKE QUADRANGLE
MONTANA-ALBERTA
7.5 MINUTE SERIES (TOPOGRAPHIC)



Maped, edited, and published by the Geological Survey
Control by USGS, USC&GS, and International Boundary Commission
Topography by photogrammetric methods from aerial
photographs taken 1966. Field checked 1968
Polyconic projection. 1927 North American datum
10,000-foot grid based on Montana coordinate system,
north zone
1000-meter Universal Transverse Mercator grid ticks,
zone 12, shown in blue
Fine red dashed lines indicate selected fence lines
Dotted land lines established by
Department of the Interior, Canada



ROAD CLASSIFICATION
Light duty road, all weather, Unimproved road, fair or dry
improved surface weather

GOOSE LAKE, MONT.-ALTA.
N4852.5-W11315/7.5

1968

AMS 3381 IV NE-SERIES V894

USCS
HISTORICAL FILE
TOPOGRAPHIC DIVISION

2800

AUG 14 1972