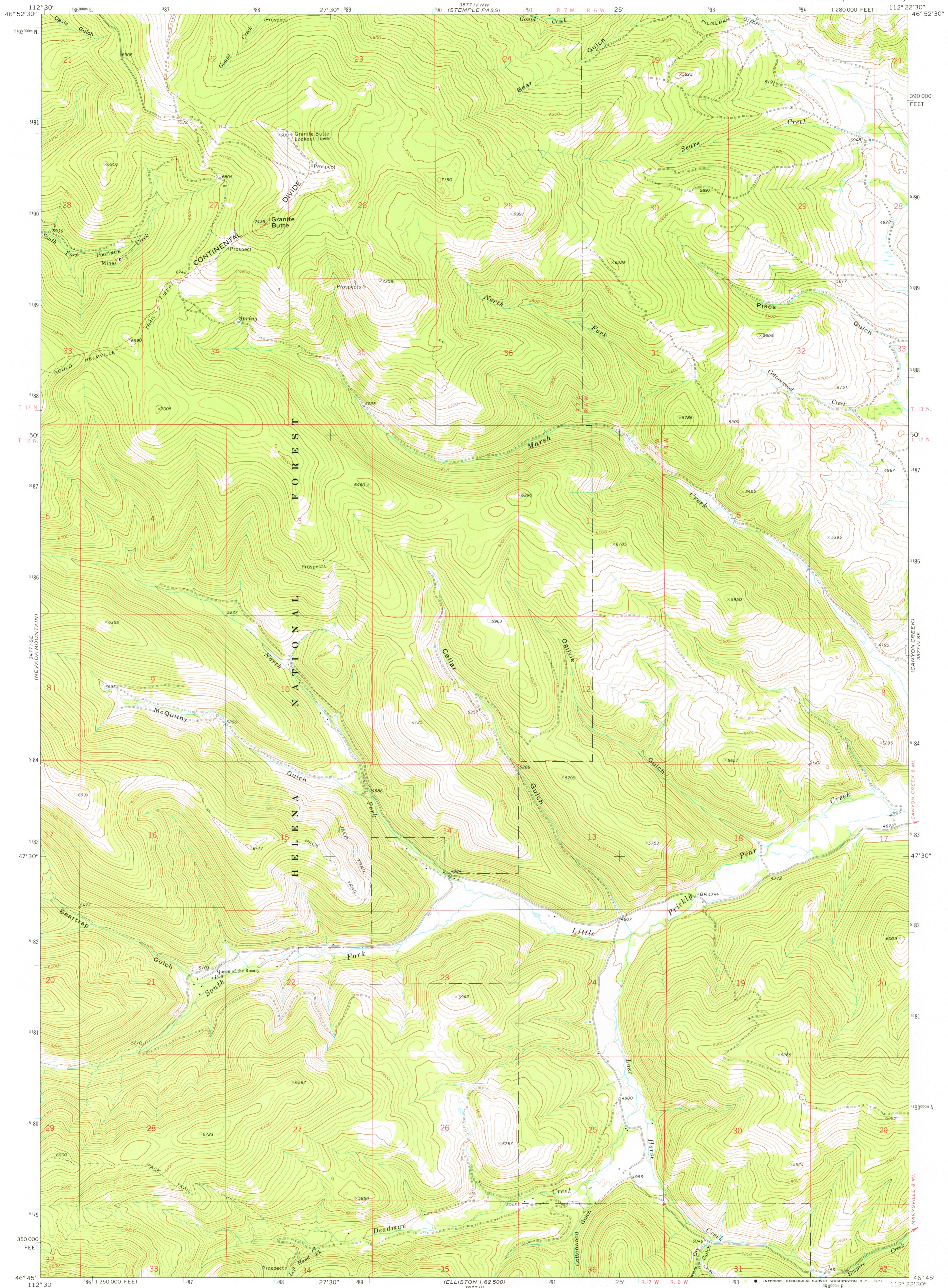


UNITED STATES
DEPARTMENT OF THE INTERIOR
GEOLOGICAL SURVEY

GRANITE BUTTE QUADRANGLE
MONTANA—LEWIS AND CLARK CO.
7.5 MINUTE SERIES (TOPOGRAPHIC)



Mapped, edited, and published by the Geological Survey

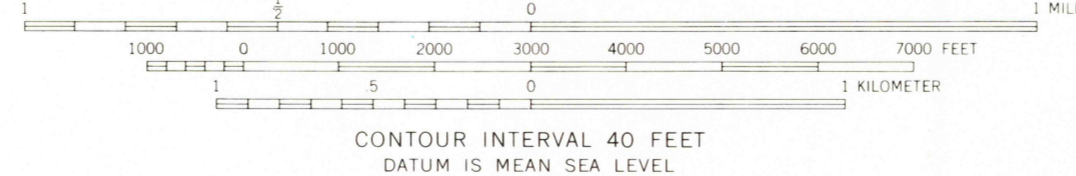
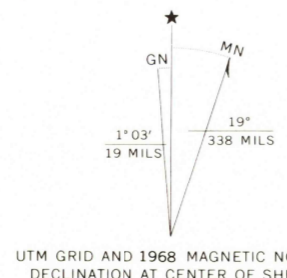
Control by USGS and USC&GS

Topography by photogrammetric methods from aerial
photographs taken 1967. Field checked 1968

Polyconic projection. 1927 North American datum
10,000-foot grid based on Montana coordinate system,
central zone

1000-meter Universal Transverse Mercator grid ticks,
zone 12, shown in blue

Fine red dashed lines indicate selected fence lines



ROAD CLASSIFICATION
Light duty road, all weather, improved surface
Unimproved road, fair or dry weather

GRANITE BUTTE, MONT.
N4645-W11222.5/7.5

USGS
Historical File
Topographic Division
AMS 3577 IV SW—SERIES B894

THIS MAP COMPLIES WITH NATIONAL MAP ACCURACY STANDARDS.
FOR SALE BY U.S. GEOLOGICAL SURVEY, DENVER, COLORADO 80225, OR WASHINGTON, D.C. 20242
A FOLDER DESCRIBING TOPOGRAPHIC MAPS AND SYMBOLS IS AVAILABLE ON REQUEST

MAR 23 1977 3800