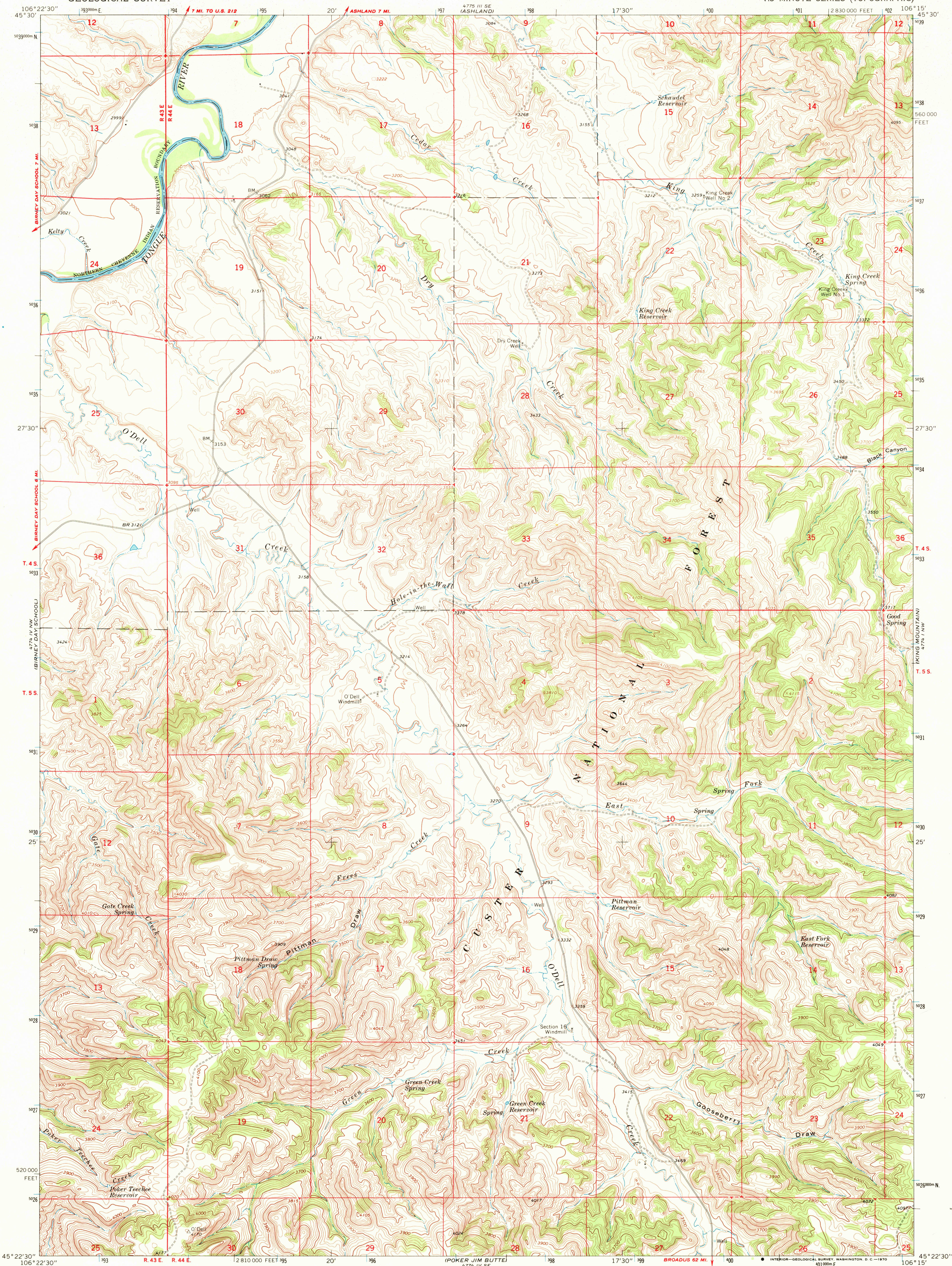


UNITED STATES
DEPARTMENT OF THE INTERIOR
GEOLOGICAL SURVEY

GREEN CREEK QUADRANGLE
MONTANA—ROSEBUD CO.
7.5 MINUTE SERIES (TOPOGRAPHIC)

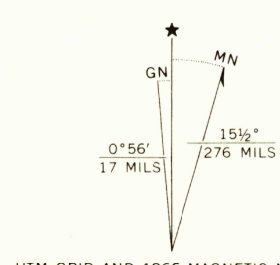


Mapped, edited, and published by the Geological Survey
Control by USGS and USC&GS

Topography by photogrammetric methods from aerial
photographs taken 1962. Field checked 1966

Polyconic projection. 1927 North American datum
10,000-foot grid based on Montana coordinate system,
south zone

1000-meter Universal Transverse Mercator grid ticks,
zone 13, shown in blue



SCALE 1:24,000

1 0 1000 2000 3000 4000 5000 6000 7000 FEET

1 0 1 2 3 4 5 6 7 8 9 10 KILOMETER

CONTOUR INTERVAL 20 FEET
DATUM IS MEAN SEA LEVEL



ROAD CLASSIFICATION
Light-duty ————— Unimproved dirt —————

GREEN CREEK, MONT.
N4522.5—W10615.7.5

1966

AMS 4774 IV NE—SERIES V894

USGS
Historical File
Topographic Division

U.S.G.S.
FILE COPY
TOPOGRAPHIC DIVISION

2785
Aug 10 1989