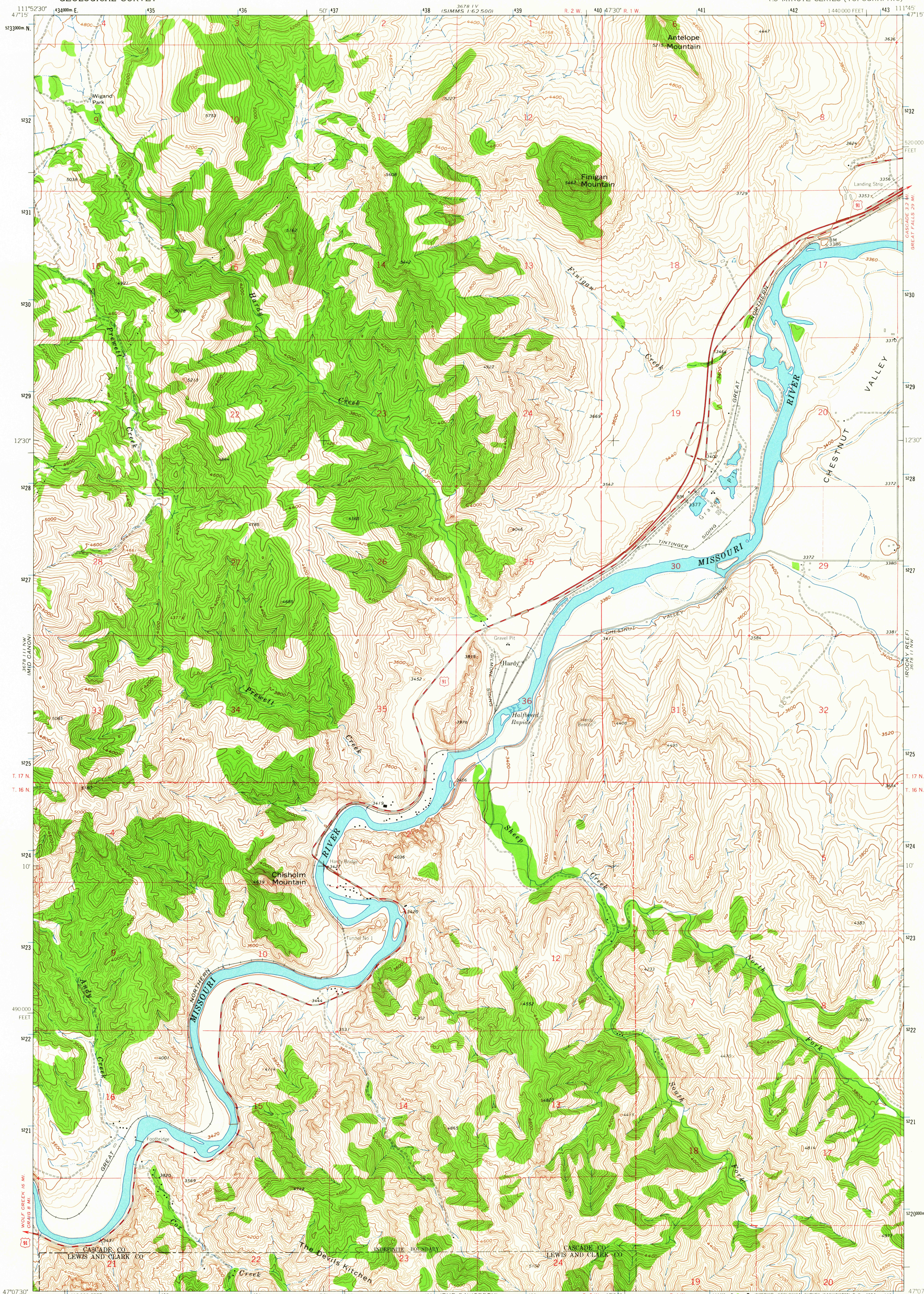
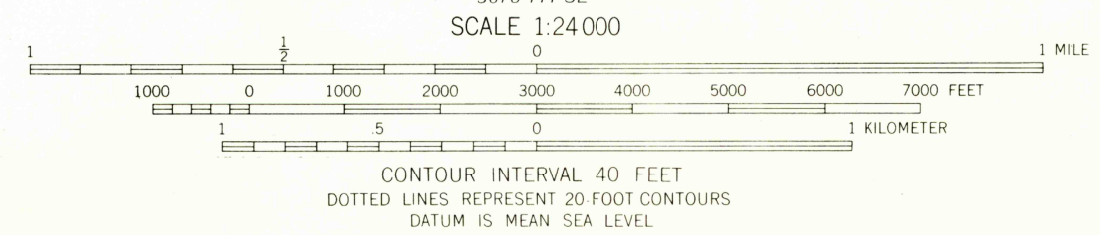
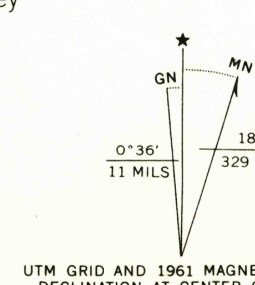


UNITED STATES
DEPARTMENT OF THE INTERIOR
GEOLOGICAL SURVEY

HARDY QUADRANGLE
MONTANA
7.5 MINUTE SERIES (TOPOGRAPHIC)



Mapped, edited, and published by the Geological Survey
Control by USGS and USC&GS
Topography by photogrammetric methods from aerial
photographs taken 1956. Field checked 1961.
Polyconic projection. 1927 North American datum.
10,000-foot grid base on Montana coordinate system, central zone
1000-meter Universal Transverse Mercator grid ticks,
zone 12, shown in blue.
Fine red dashed lines indicate selected fence lines.



ROAD CLASSIFICATION	
Heavy-duty	Light-duty
Medium-duty	Unimproved dirt
U.S. Route	

HARDY, MONT.
N47075-W11145/7.5
1961

U.S.G.S.
FILE COPY
TOPOGRAPHIC DIVISION

AMS 3678 III NE-SERIES V894

USGS
Historical File
Topographic Division

JUN 16 1964