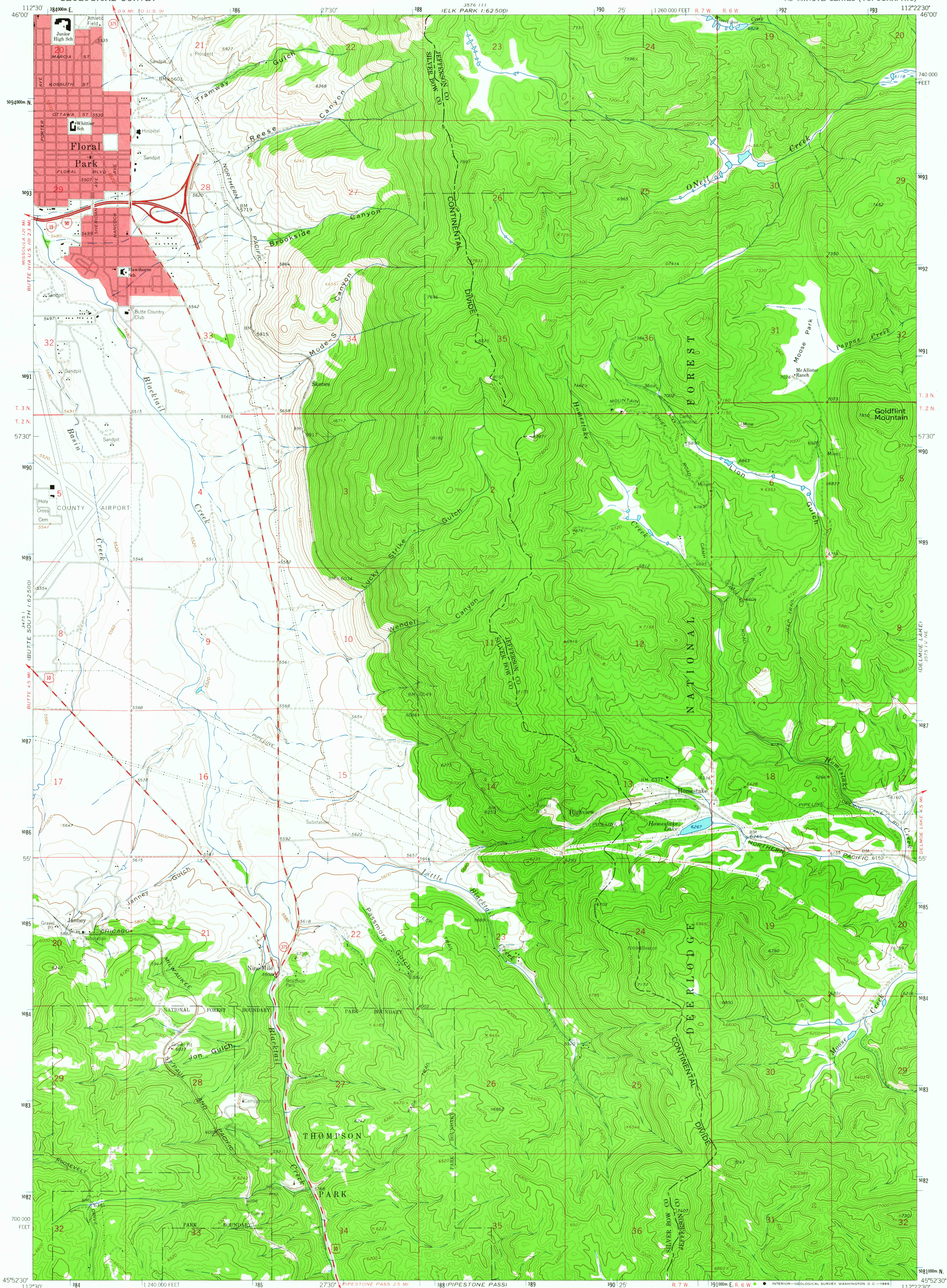


UNITED STATES
DEPARTMENT OF THE INTERIOR
GEOLOGICAL SURVEY

HOMESTAKE QUADRANGLE
MONTANA
7.5 MINUTE SERIES (TOPOGRAPHIC)



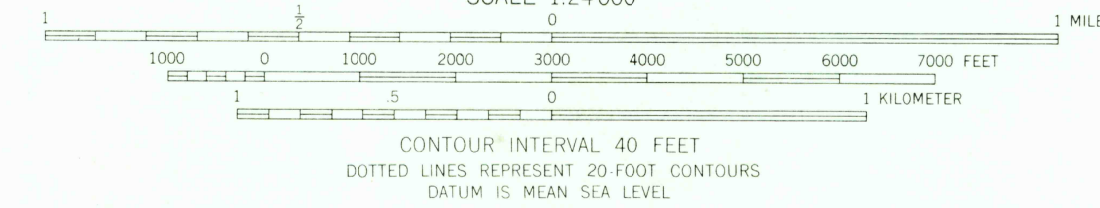
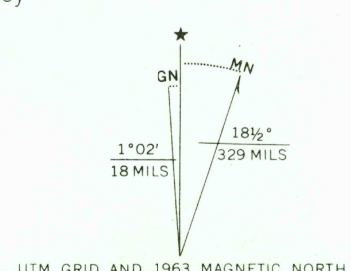
Mapped, edited, and published by the Geological Survey

Control by USGS and USCGS

Topography by photogrammetric methods from aerial photographs taken 1960. Field checked 1963.

Polyconic projection. 1927 North American datum. 10,000-foot grid based on Montana coordinate system, south zone. 1000-meter Universal Transverse Mercator grid ticks, zone 12, shown in blue.

Red tint indicates areas in which only landmark buildings are shown.



U.S.G.S.
FILE COPY
TOPOGRAPHIC DIVISION

HOMESTAKE, MONT.
N4552.5 - W11222.5/7.5
1963
AMS 3575 IV NW - SERIES V894

USGS
Historical File
Topographic Division

JUL 5 1966