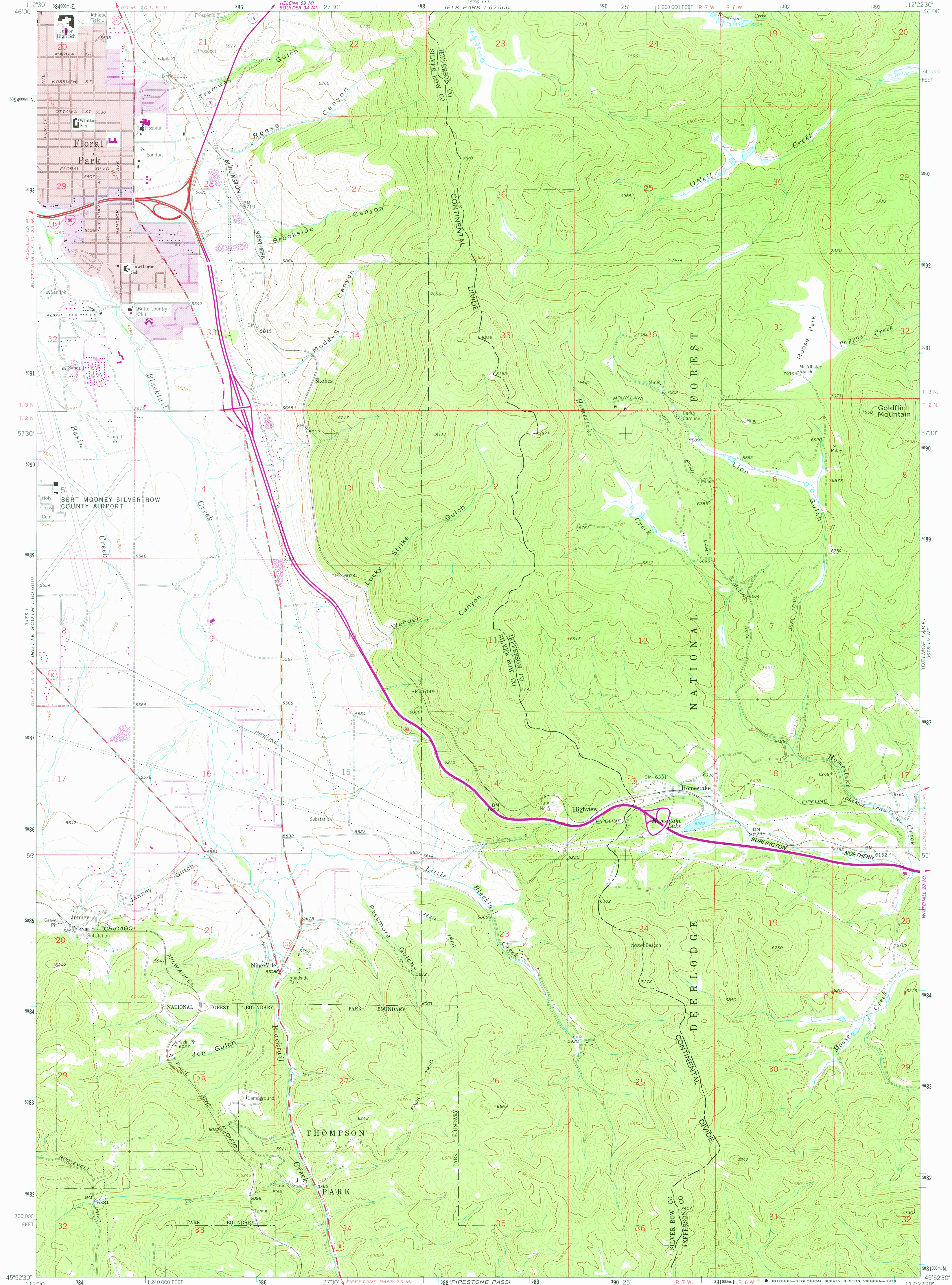


UNITED STATES
DEPARTMENT OF THE INTERIOR
GEOLOGICAL SURVEY

HOMESTAKE QUADRANGLE
MONTANA
7.5 MINUTE SERIES (TOPOGRAPHIC)



Mapped, edited, and published by the Geological Survey

Control by USGS and NOS/NOAA

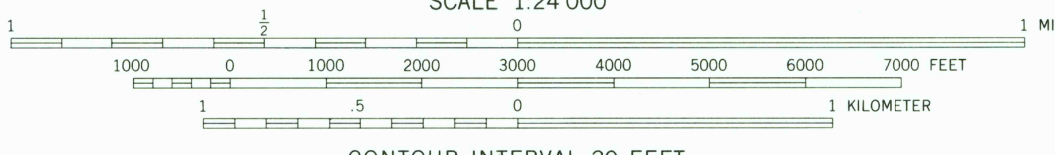
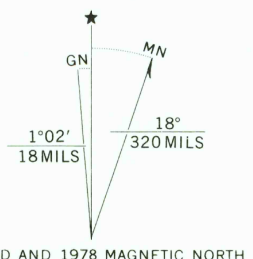
Topography by photogrammetric methods from aerial
photographs taken 1960. Field checked 1963

Polyconic projection: 1927 North American datum
10,000-foot grid based on Montana coordinate system, south zone
1000-meter Universal Transverse Mercator grid ticks,
zone 12, shown in blue

Red tint indicates areas in which only landmark buildings are shown

Purple tint indicates extension of urban areas

Revisions shown in purple compiled from aerial photographs taken
1976. Map edited 1978. This information not field checked



CONTOUR INTERVAL 20 FEET
DOTTED LINES REPRESENT 10-FOOT CONTOURS
NATIONAL GEODETIC VERTICAL DATUM OF 1929



ROAD CLASSIFICATION	
Heavy-duty	Light-duty
Medium-duty	Unimproved dirt
Interstate Route	U.S. Route
	State Route

USGS
Historical File
Topographic Division

HOMESTAKE, MONT.
N4552.5-W11222.5/7.5

1963
PHOTOREVISED 1978
AMS 3575 IV NW-SERIES V894

JAN 05 1979

3600