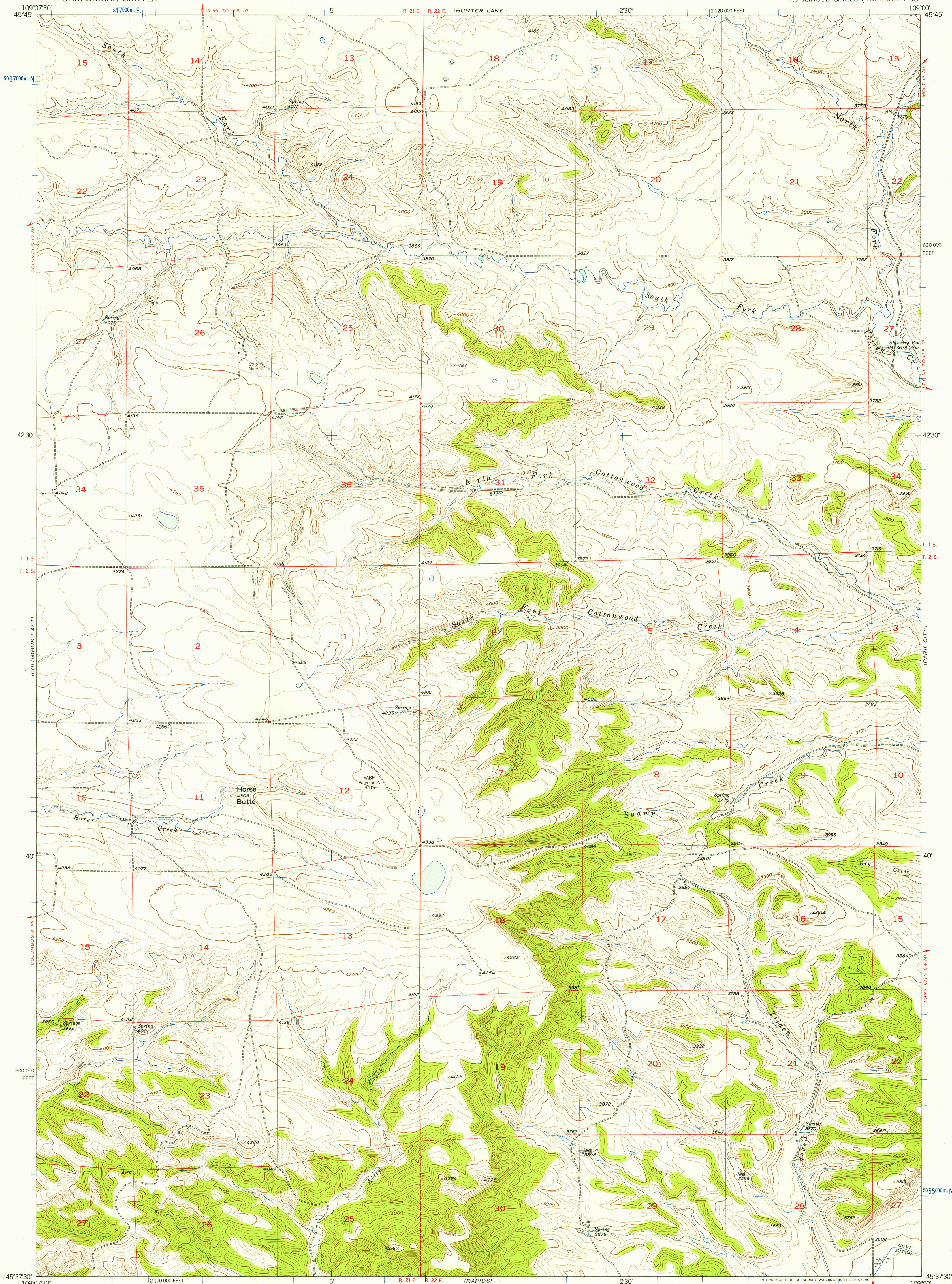


UNITED STATES  
DEPARTMENT OF THE INTERIOR  
GEOLOGICAL SURVEY

HORSE BUTTE QUADRANGLE  
MONTANA-STILLWATER CO.  
7.5 MINUTE SERIES (TOPOGRAPHIC)



USGS  
FILE COPY  
TOPOGRAPHIC DIVISION

USGS  
FILE COPY  
TOPOGRAPHIC DIVISION

USGS  
Historical File  
Topographic Division

SEP 23 1957

2090

Maped, edited, and published by the Geological Survey  
as part of the Department of the Interior program  
for the development of the Missouri River Basin  
Control by USGS and USC&GS  
Topography from aerial photographs by multiplex methods  
Aerial photographs taken 1951. Field check 1956  
Polyconic projection. 1927 North American datum  
10,000-foot grid based on Montana coordinate system,  
south zone  
1000-meter Universal Transverse Mercator grid ticks,  
zone 12, shown in blue  
Dashed land lines indicate approximate locations

TRUE NORTH  
MAGNETIC NORTH  
APPROXIMATE MEAN  
DECLINATION, 1956

SCALE 1:24,000  
1 0 1000 2000 3000 4000 5000 6000 7000 FEET  
1 0 1 2 KILOMETER  
CONTOUR INTERVAL 20 FEET  
DATUM IS MEAN SEA LEVEL

MONTANA  
QUADRANGLE LOCATION

ROAD CLASSIFICATION  
Light-duty Unimproved dirt

HORSE BUTTE, MONT.  
N4537.5-W10900/7.5

1956

THIS MAP COMPLIES WITH NATIONAL MAP ACCURACY STANDARDS  
FOR SALE BY U.S. GEOLOGICAL SURVEY, DENVER 2, COLORADO OR WASHINGTON 25, D.C.  
A FOLDER DESCRIBING TOPOGRAPHIC MAPS AND SYMBOLS IS AVAILABLE ON REQUEST