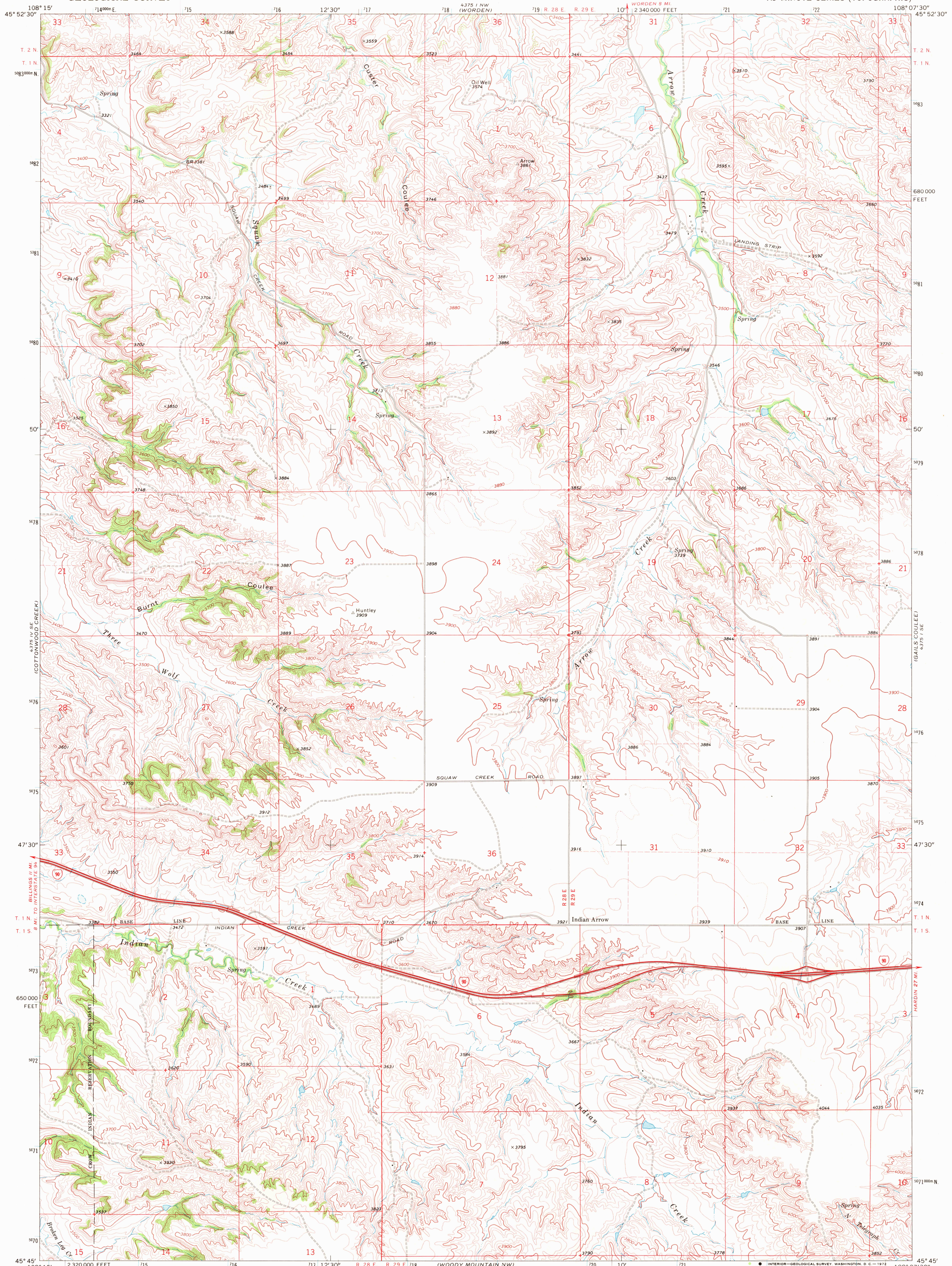


UNITED STATES
DEPARTMENT OF THE INTERIOR
GEOLOGICAL SURVEY

INDIAN ARROW QUADRANGLE
MONTANA—YELLOWSTONE CO.
7.5 MINUTE SERIES (TOPOGRAPHIC)

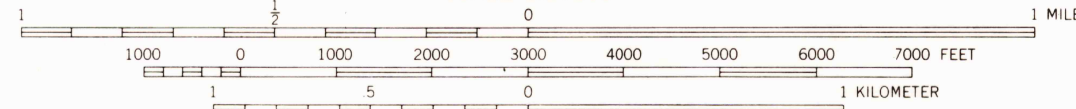
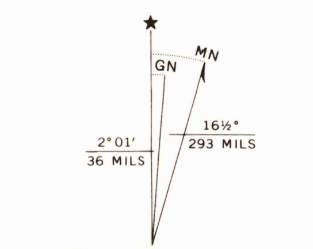


Maped, edited, and published by the Geological Survey

Control by USGS and USC&GS

Topography by photogrammetric methods from aerial
photographs taken 1968. Field checked 1969

Polyconic projection, 1927 North American datum
10,000-foot grid based on Montana coordinate system,
south zone
1000-meter Universal Transverse Mercator grid ticks,
zone 12, shown in blue
Fine red dashed lines indicate selected fence lines



CONTOUR INTERVAL 20 FEET
DOTTED LINES REPRESENT 10-FOOT CONTOURS
DATUM IS MEAN SEA LEVEL



ROAD CLASSIFICATION
Primary highway, all weather, hard surface
Light-duty road, all weather, improved surface
Unimproved road, fair or dry weather
Interstate Route

INDIAN ARROW, MONT.
N4545—W10807.5/7.5

1969

AMS 4375 1 SW—SERIES V884

USGS
HISTORICAL FILE
TOPOGRAPHIC DIVISION

AUG 4 1972

2805