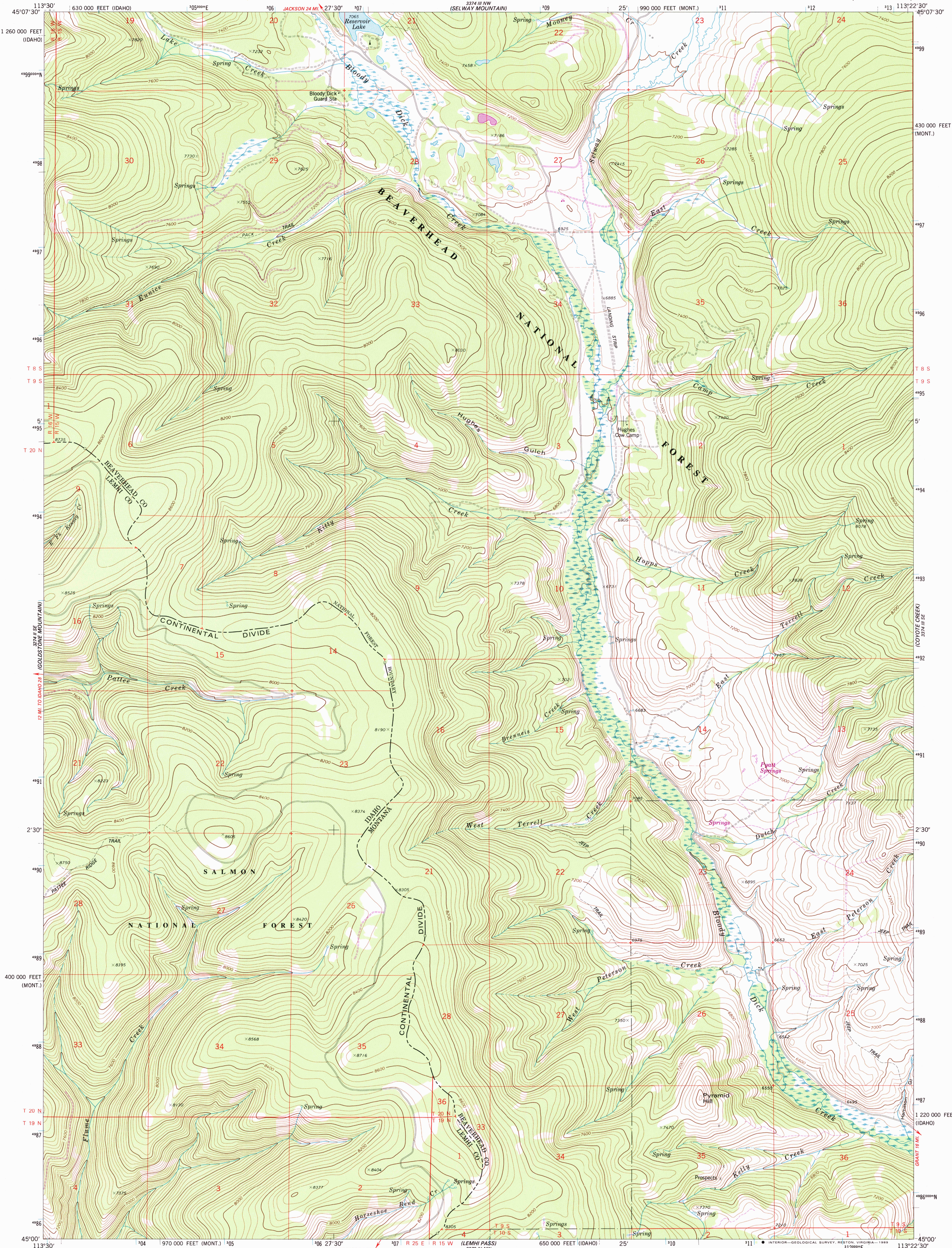
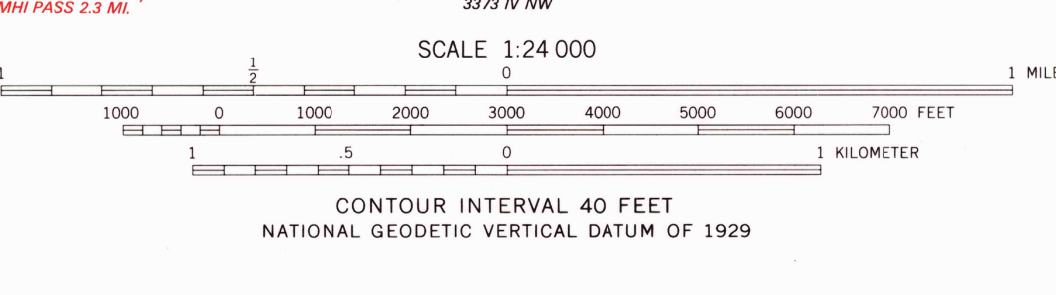
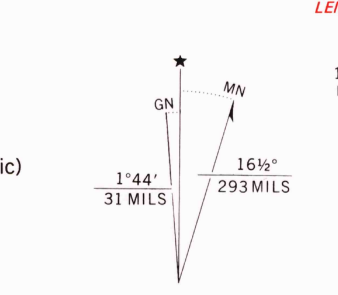


UNITED STATES
DEPARTMENT OF THE INTERIOR
GEOLOGICAL SURVEY

KITTY CREEK QUADRANGLE
MONTANA—IDAHO
7.5 MINUTE SERIES (TOPOGRAPHIC)



Mapped, edited, and published by the Geological Survey
Control by USGS, NOS/NOAA, and U. S. Forest Service
Topography by photogrammetric methods from aerial photographs
taken 1967. Field checked 1974. Map edited 1978
Projection: Montana coordinate system, south zone (Lambert conformal conic)
10,000-foot grid ticks based on Montana coordinate system, south
zone and Idaho coordinate system, central zone
1000-meter Universal Transverse Mercator grid ticks,
zone 12, shown in blue. 1927 North American Datum
Fine red dashed lines indicate selected fence lines
Where omitted, land lines have not been established
There may be private inholdings within the boundaries of the
National or State reservations shown on this map
To place on the predicted North American Datum 1983
move the projection lines 12 meters north and
70 meters east as shown by dashed corner ticks



ROAD CLASSIFICATION
Primary highway, hard surface
Secondary highway, hard surface
Unimproved road
Interstate Route
U. S. Route
State Route

KITTY CREEK, MONT.—IDAHO
45113-A4-TF-024

1978
PHOTOREVISED 1988
DMA 3374 III SW—SERIES V894

THIS MAP COMPLIES WITH NATIONAL MAP ACCURACY STANDARDS
FOR SALE BY U. S. GEOLOGICAL SURVEY
DENVER, COLORADO 80225 OR RESTON, VIRGINIA 22092
A FOLDER DESCRIBING TOPOGRAPHIC MAPS AND SYMBOLS IS AVAILABLE ON REQUEST

Revisions shown in purple and woodland
compiled from aerial photographs taken 1984
and other source data. Partial field check
by U. S. Forest Service. Map edited 1988

USGS NMD HISTORICAL MAP
MAY 03 1989
REC'D FILE COPY