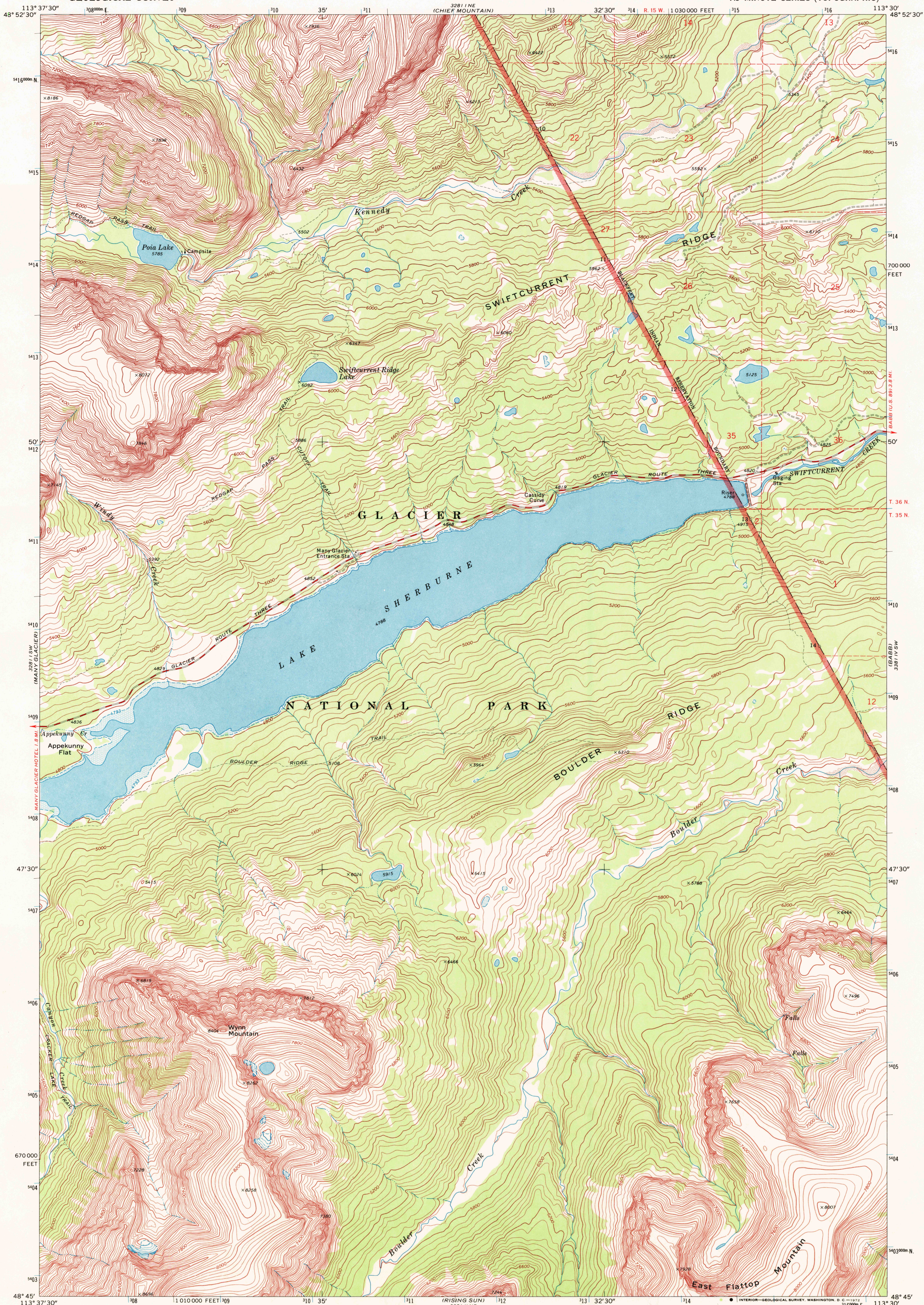


UNITED STATES  
DEPARTMENT OF THE INTERIOR  
GEOLOGICAL SURVEY

LAKE SHERBURNE QUADRANGLE  
MONTANA—GLACIER CO.  
7.5 MINUTE SERIES (TOPOGRAPHIC)



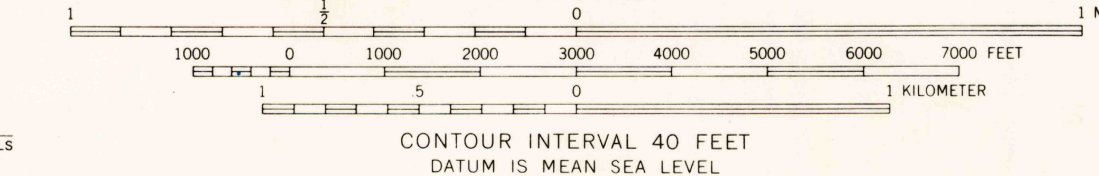
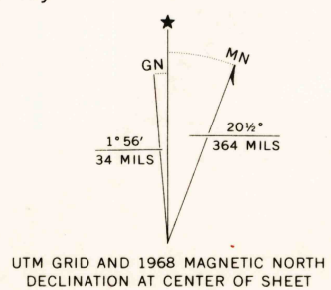
Mapped, edited, and published by the Geological Survey

Control by USGS and USC&GS

Topography by photogrammetric methods from aerial photographs taken 1966. Field checked 1968

Polyconic projection. 1927 North American datum  
10,000-foot grid based on Montana coordinate system,  
north zone  
1000-meter Universal Transverse Mercator grid ticks,  
zone 12, shown in blue

Where omitted, land lines have not been established  
Areas covered by dashed light-blue pattern are subject  
to controlled inundation



ROAD CLASSIFICATION  
Secondary highway, all weather,  
hard surface  
Unimproved road, fair or dry  
weather



LAKE SHERBURNE, MONT.  
N4845—W11330/7.5

1968

AMS 3281 I SE—SERIES Y894

THIS MAP COMPLIES WITH NATIONAL MAP ACCURACY STANDARDS  
FOR SALE BY U. S. GEOLOGICAL SURVEY, DENVER, COLORADO 80225, OR WASHINGTON, D. C. 20242  
A FOLDER DESCRIBING TOPOGRAPHIC MAPS AND SYMBOLS IS AVAILABLE ON REQUEST

USGS  
HISTORICAL FILE  
TOPOGRAPHIC DIVISION

MAY 9 1972

3580