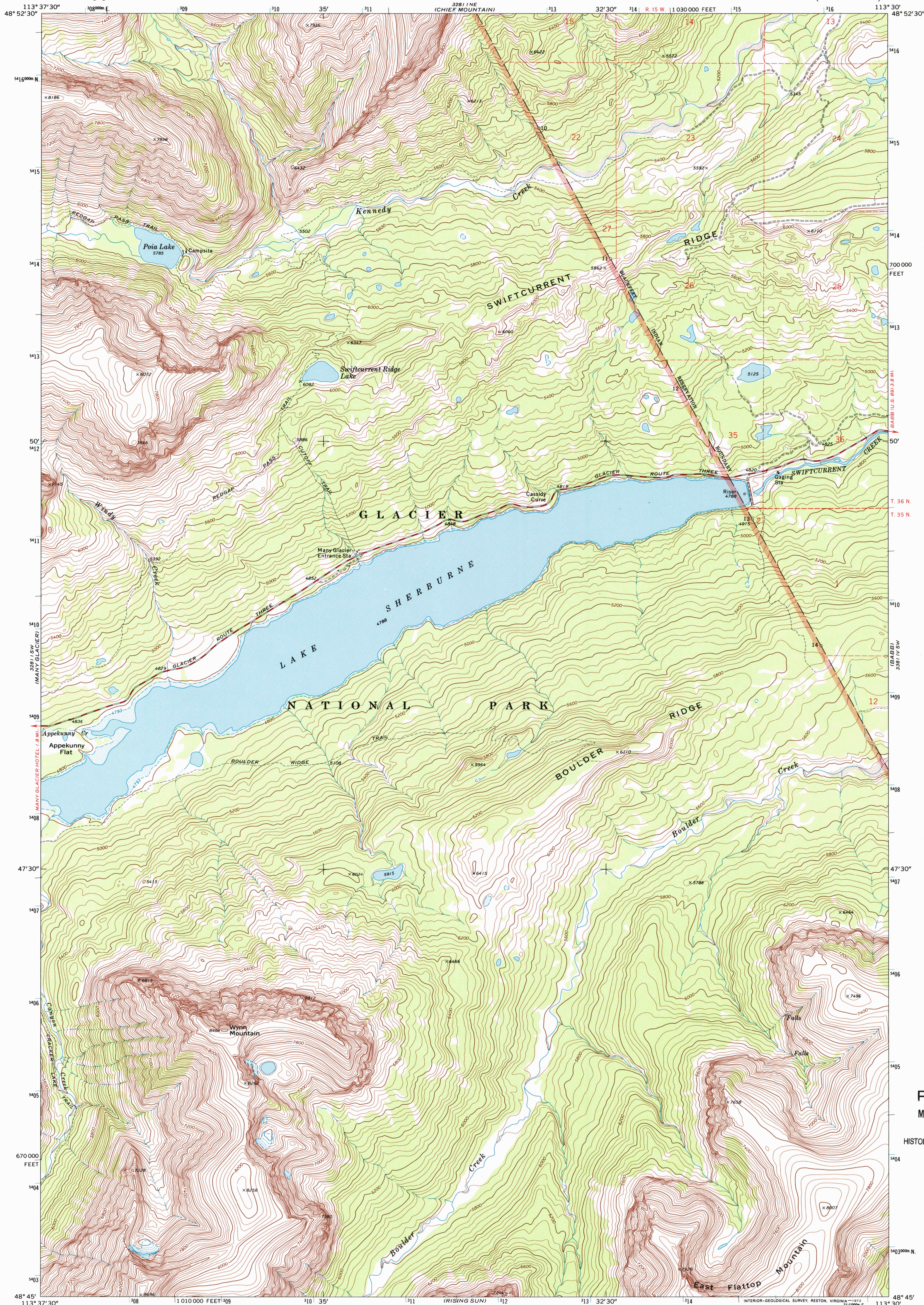




U.S. DEPARTMENT OF THE INTERIOR
U.S. GEOLOGICAL SURVEY

LAKE SHERBURNE QUADRANGLE
MONTANA—GLACIER CO.
7.5 MINUTE SERIES (TOPOGRAPHIC)



Mapped, edited, and published by the Geological Survey

Control by USGS and USC&GS

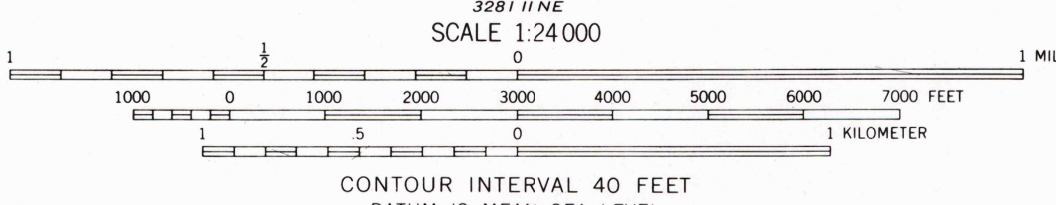
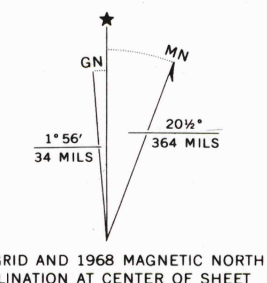
Topography by photogrammetric methods from aerial photographs taken 1966. Field checked 1968

Polyconic projection. 1927 North American datum, 10,000-foot grid based on Montana coordinate system, north zone

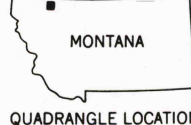
1000-meter Universal Transverse Mercator grid ticks, zone 12, shown in blue

Where omitted, land lines have not been established

Areas covered by dashed light-blue pattern are subject to controlled inundation



THIS MAP COMPLIES WITH NATIONAL MAP ACCURACY STANDARDS
FOR SALE BY U.S. GEOLOGICAL SURVEY, P.O. BOX 25286, DENVER, COLORADO 80225
A FOLDER DESCRIBING TOPOGRAPHIC MAPS AND SYMBOLS IS AVAILABLE ON REQUEST



ROAD CLASSIFICATION
Secondary highway, all weather, hard surface
Unimproved road, fair or dry weather

LAKE SHERBURNE, MONT.
N4845—W11330/7.5

1968

AMS 3281 I SE—SERIES V884

RECEIVED
MAY 30 2002

U.S. GEOLOGICAL SURVEY
HISTORICAL MAP ARCHIVES

