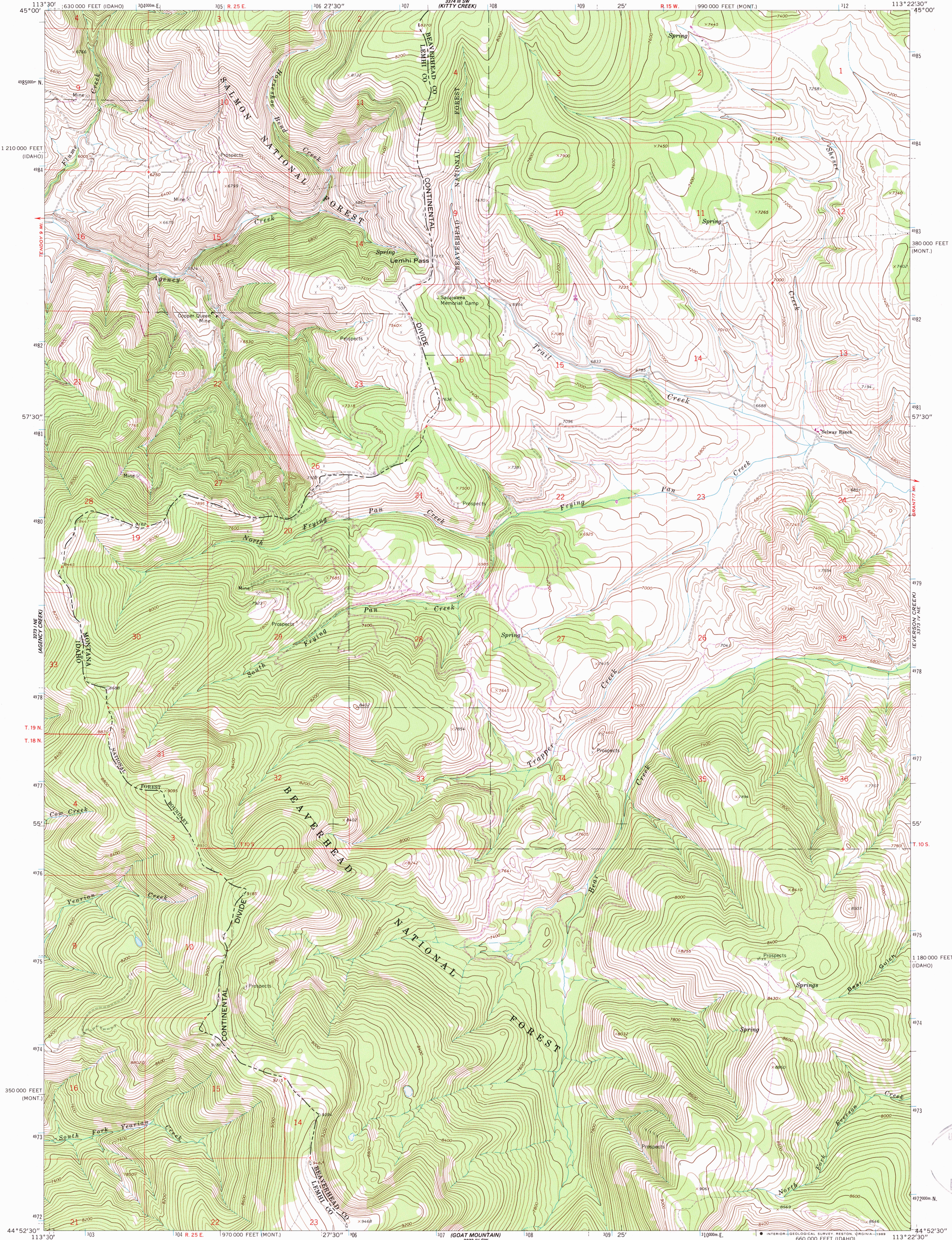
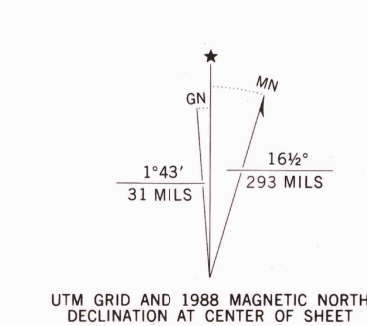


UNITED STATES  
DEPARTMENT OF THE INTERIOR  
GEOLOGICAL SURVEY

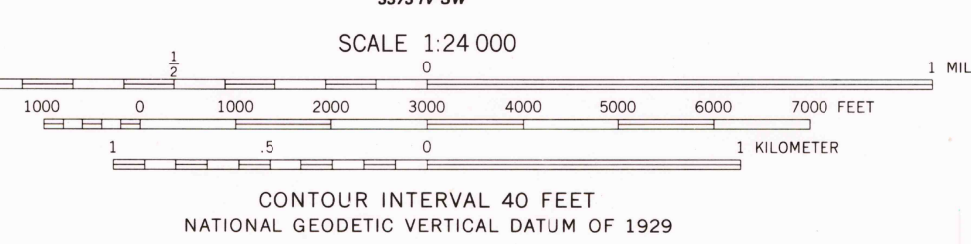
LEMHI PASS QUADRANGLE  
MONTANA-IDAHO  
7.5 MINUTE SERIES (TOPOGRAPHIC)



Mapped, edited, and published by the Geological Survey  
Control by USGS and NOS/NOAA  
Topography by photogrammetric methods from aerial  
photographs taken 1964. Field checked 1965  
Polyconic projection. 1927 North American Datum  
10,000-foot grids based on Montana coordinate system,  
south zone, and Idaho coordinate system,  
central zone  
1000-meter Universal Transverse Mercator grid ticks,  
zone 12, shown in blue  
Fine red dashed lines indicate selected fence lines  
Where omitted, land lines have not been established  
There may be private inholdings within the boundaries of  
the National or State reservations shown on this map



To place on the predicted North American  
Datum 1983 move the projection lines  
12 meters north and 70 meters east  
as shown by dashed corner ticks



THIS MAP COMPLIES WITH NATIONAL MAP ACCURACY STANDARDS  
FOR SALE BY U.S. GEOLOGICAL SURVEY  
DENVER, COLORADO 80225, OR RESTON, VIRGINIA 22092  
A FOLDER DESCRIBING TOPOGRAPHIC MAPS AND SYMBOLS IS AVAILABLE ON REQUEST



Revisions shown in purple and woodland  
compiled from aerial photographs taken 1984  
and other source data. Partial field check  
by U.S. Forest Service. Map edited 1988

ROAD CLASSIFICATION  
Light-duty ————— Unimproved dirt —————

LEMHI PASS, MONT.-IDAHO  
44113-H4-TF-024

1965  
PHOTOREVISED 1988  
DMA 3373 IV NW-SERIES V894.

