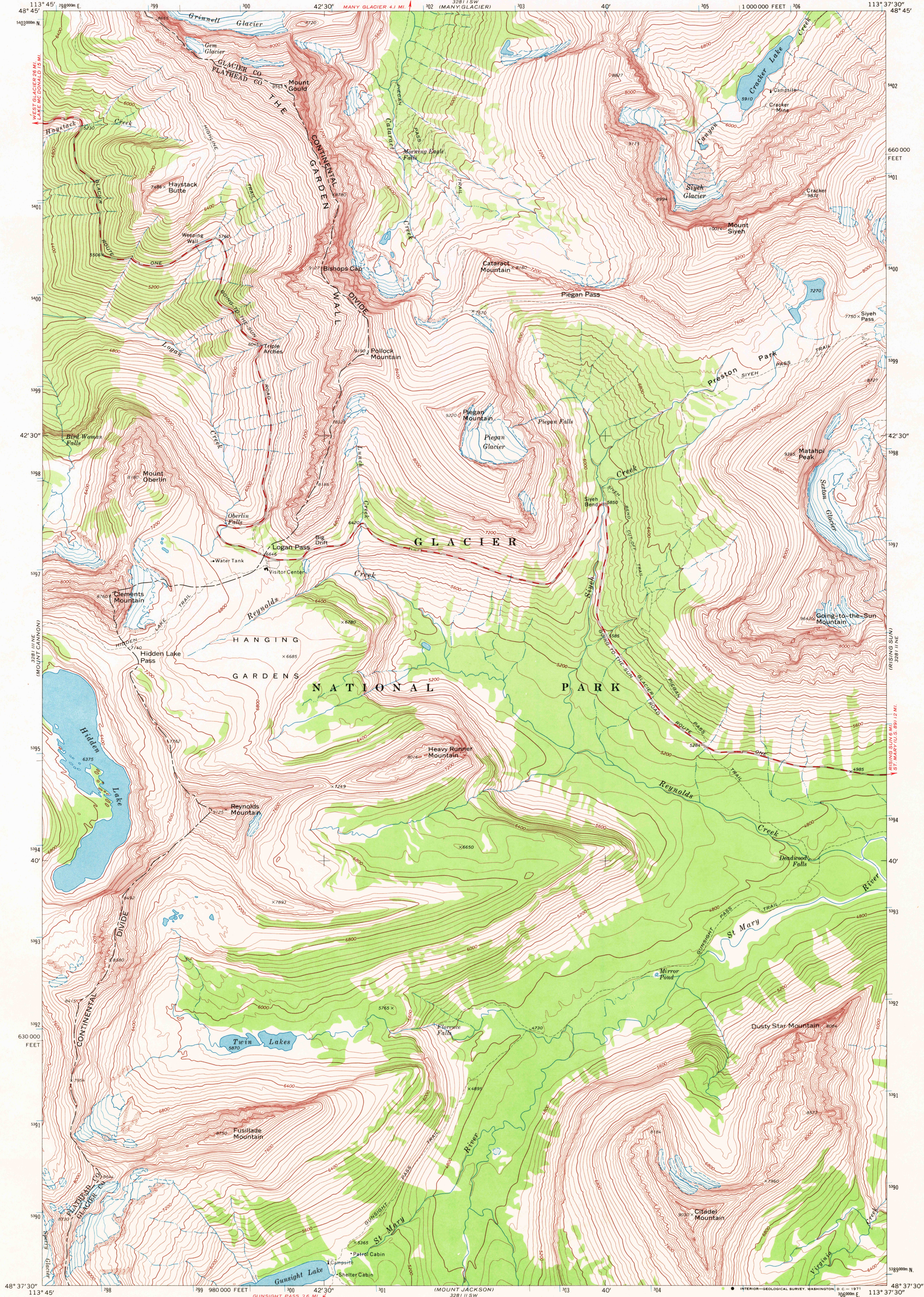


UNITED STATES  
DEPARTMENT OF THE INTERIOR  
GEOLOGICAL SURVEY

LOGAN PASS QUADRANGLE  
MONTANA  
7.5 MINUTE SERIES (TOPOGRAPHIC)



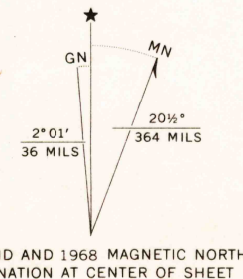
Mapped, edited, and published by the Geological Survey

Control by USGS and USC&GS

Topography by photogrammetric methods from aerial photographs taken 1966. Field checked 1968

Polyconic projection. 1927 North American datum 10,000-foot grid based on Montana coordinate system, north zone 1000-meter Universal Transverse Mercator grid ticks, zone 12, shown in blue

Land lines have not been established in this area



CONTOUR INTERVAL 80 FEET  
DATUM IS MEAN SEA LEVEL



ROAD CLASSIFICATION  
Secondary highway, all weather, hard surface  
Unimproved road, fair or dry weather

LOGAN PASS, MONT.  
N4837.5-W11337.5/7.5

1968

AMS 3281 II NW-SERIES V894

THIS MAP COMPLIES WITH NATIONAL MAP ACCURACY STANDARDS  
FOR SALE BY U.S. GEOLOGICAL SURVEY, DENVER, COLORADO 80225, OR WASHINGTON, D.C. 20242  
A FOLDER DESCRIBING TOPOGRAPHIC MAPS AND SYMBOLS IS AVAILABLE ON REQUEST

DEC 21 1971

USGS  
HISTORICAL FILE  
TOPOGRAPHIC DIVISION