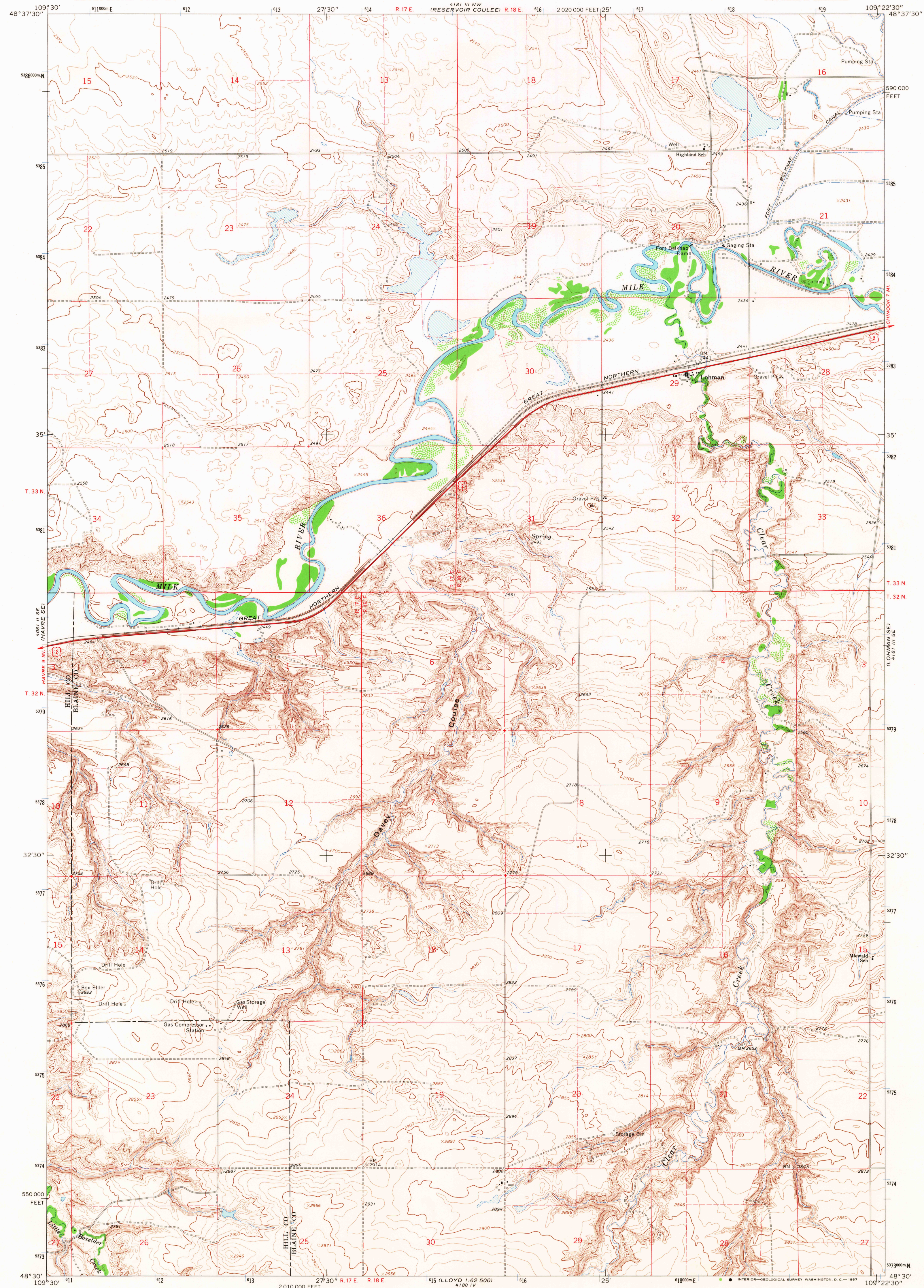


4081 III NE
(HAYRE NE)

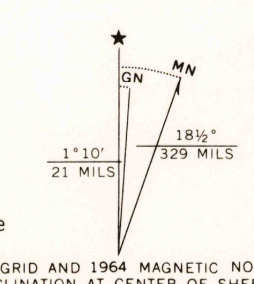
UNITED STATES
DEPARTMENT OF THE INTERIOR
GEOLOGICAL SURVEY

LOHMAN QUADRANGLE
MONTANA
7.5 MINUTE SERIES (TOPOGRAPHIC)
SW 4 YANTIC 15' QUADRANGLE

4181 III NE
(TELESCOPE COULEE)



Mapped, edited, and published by the Geological Survey as part of the Department of the Interior program for the development of the Missouri River Basin. Control by USGS and USC&GS. Topography by photogrammetric methods from aerial photographs taken 1963. Field checked 1964. Polyconic projection. 1927 North American datum 10,000-foot grid based on Montana coordinate system, north zone 1000-meter Universal Transverse Mercator grid ticks, zone 12, shown in blue. Fine red dashed lines indicate selected fence lines.



SCALE 1:24,000
CONTOUR INTERVAL 10 FEET
DATUM IS MEAN SEA LEVEL
THIS MAP COMPLIES WITH NATIONAL MAP ACCURACY STANDARDS
FOR SALE BY U. S. GEOLOGICAL SURVEY, DENVER, COLORADO 80225, OR WASHINGTON, D. C. 20242
A FOLDER DESCRIBING TOPOGRAPHIC MAPS AND SYMBOLS IS AVAILABLE ON REQUEST

ROAD CLASSIFICATION
Heavy-duty ——— Light-duty ———
Unimproved dirt - - - - -
U.S. Route



LOHMAN, MONT.
SW 4 YANTIC 15' QUADRANGLE
N4830—W10922.5/7.5

3205
OCT 11 1967