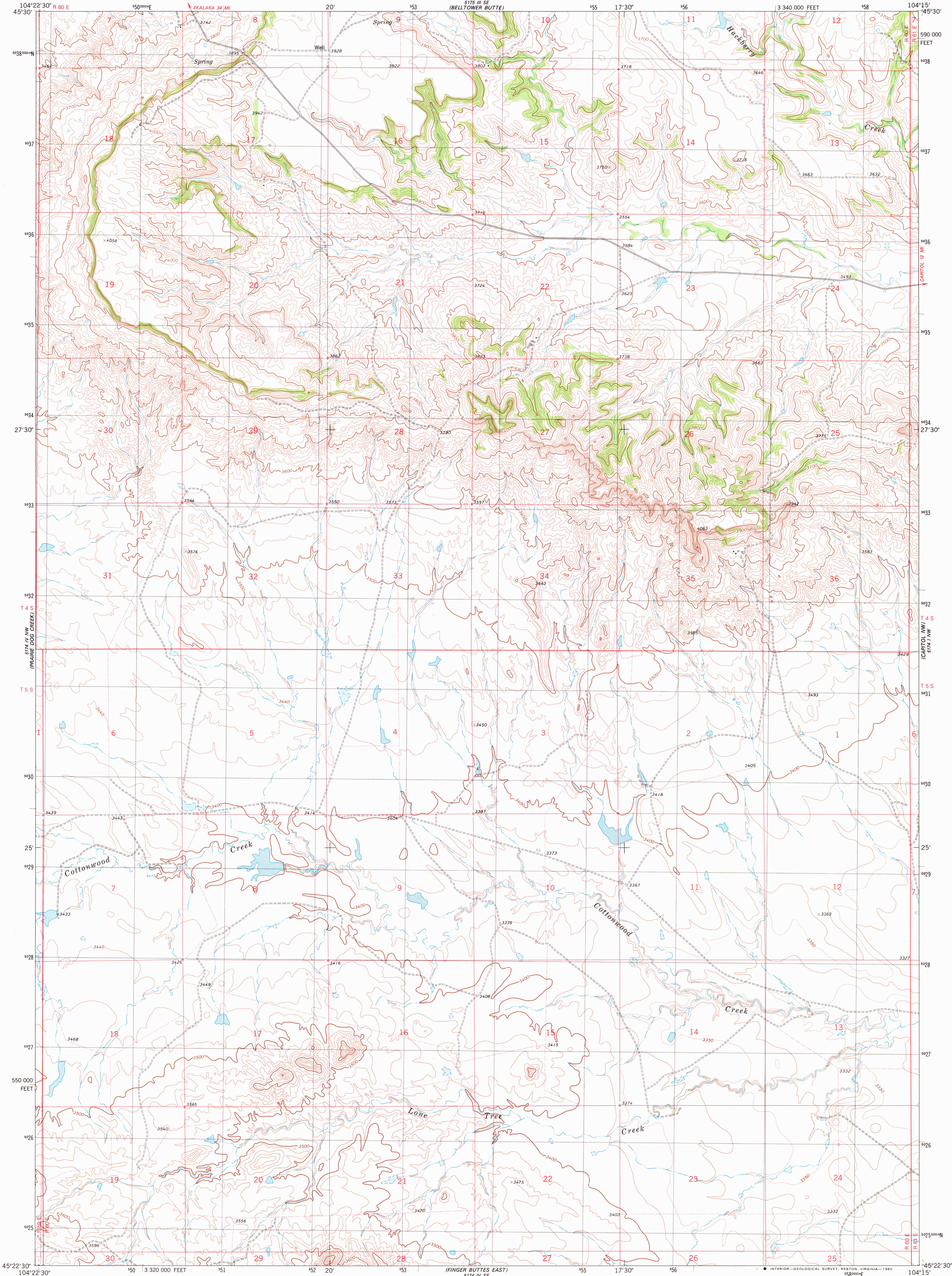


UNITED STATES
DEPARTMENT OF THE INTERIOR
GEOLOGICAL SURVEY

LONE TREE CREEK QUADRANGLE
MONTANA—CARTER CO.
7.5 MINUTE SERIES (TOPOGRAPHIC)



Mapped, edited, and published by the Geological Survey

Control by USGS and NOS/NOAA

Topography by photogrammetric methods from aerial photographs taken 1972. Field checked 1974. Map edited 1980

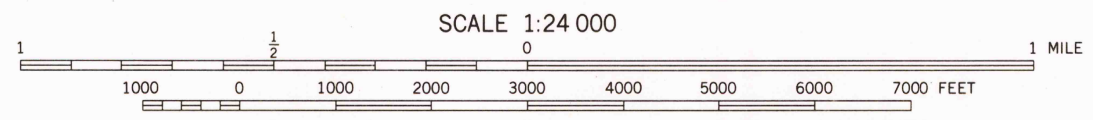
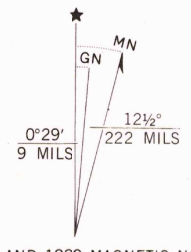
Projection and 10,000-foot grid ticks: Montana coordinate system, south zone (Lambert conformal conic)

1000-meter Universal Transverse Mercator grid, zone 13

1927 North American datum

To place on the predicted North American Datum 1983 move the projection lines 5 meters north and 41 meters east as shown by dashed corner ticks

Fine red dashed lines indicate selected fence lines



CONTOUR INTERVAL 20 FEET
DOTTED LINES REPRESENT 10-FOOT CONTOURS
NATIONAL GEODETIC VERTICAL DATUM OF 1929

THIS MAP COMPLIES WITH NATIONAL MAP ACCURACY STANDARDS
FOR SALE BY U. S. GEOLOGICAL SURVEY, DENVER, COLORADO 80225, OR RESTON, VIRGINIA 22092
A FOLDER DESCRIBING TOPOGRAPHIC MAPS AND SYMBOLS IS AVAILABLE ON REQUEST



ROAD CLASSIFICATION	
Primary highway, hard surface	Light-duty road, hard or improved surface
Secondary highway, hard surface	Unimproved road
Interstate Route	U. S. Route
	State Route

LONE TREE CREEK, MONT.
N4522.5-W10415/7.5

1980

DMA 5174 IV NE—SERIES V894

DEC 22 1980

1750