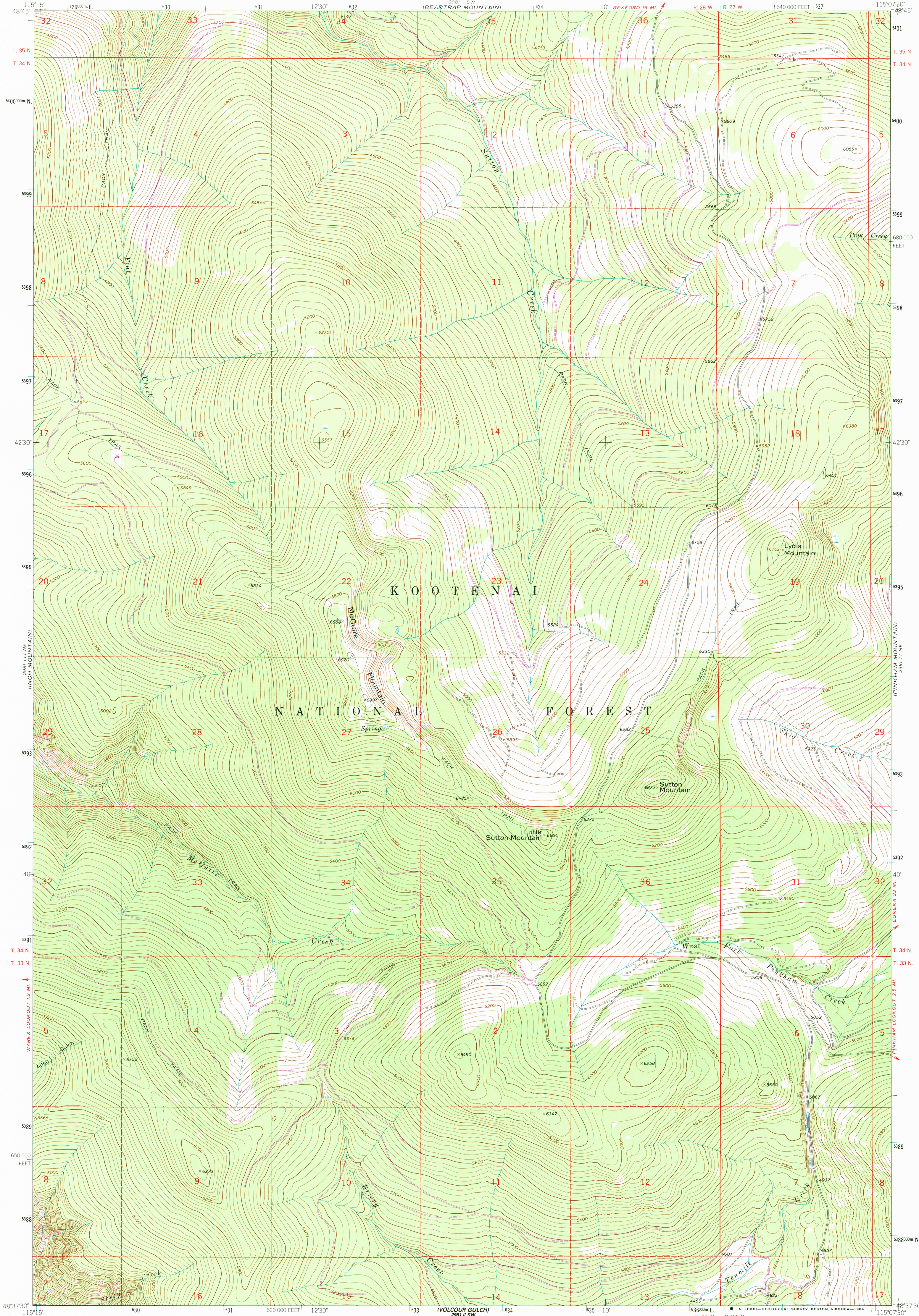


UNITED STATES  
DEPARTMENT OF THE INTERIOR  
GEOLOGICAL SURVEY

MC GUIRE MOUNTAIN QUADRANGLE  
MONTANA-LINCOLN CO.  
7.5 MINUTE SERIES (TOPOGRAPHIC)



Mapped, edited, and published by the Geological Survey

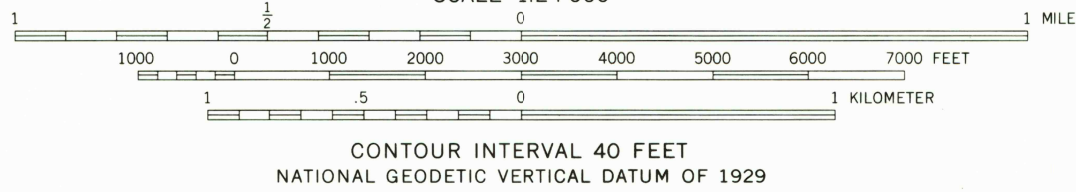
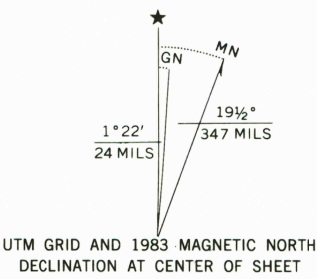
Control by USGS and NOS/NOAA

Topography by photogrammetric methods from aerial photographs taken 1962. Field checked 1963.

Polycyclic projection. 1927 North American Datum  
10,000-foot grid based on Montana coordinate system, north zone  
1000-meter Universal Transverse Mercator grid ticks,  
zone 11, shown in blue

There may be private inholdings within the boundaries of the National or State reservations shown on this map

To place on the predicted North American Datum 1983  
move the projection lines 12 meters north and  
73 meters east as shown by dashed corner ticks



ROAD CLASSIFICATION  
Light-duty ————— Unimproved dirt —————

MC GUIRE MOUNTAIN, MONT.  
48115-F2-TF-024

1963  
PHOTOREVISED 1983  
DMA 2981 11 NW-SERIES V894

THIS MAP COMPLIES WITH NATIONAL MAP ACCURACY STANDARDS  
FOR SALE BY U. S. GEOLOGICAL SURVEY, DENVER, COLORADO 80225, OR RESTON, VIRGINIA 22092  
A FOLDER DESCRIBING TOPOGRAPHIC MAPS AND SYMBOLS IS AVAILABLE ON REQUEST

Revisions shown in purple and woodland  
compiled from aerial photographs taken 1982  
and other source data. Partial field check  
by U.S. Forest Service. Map edited 1983

RETURN TO:  
USGS NMD HISTORICAL MAP ARCHIVES

FEB 21 1984