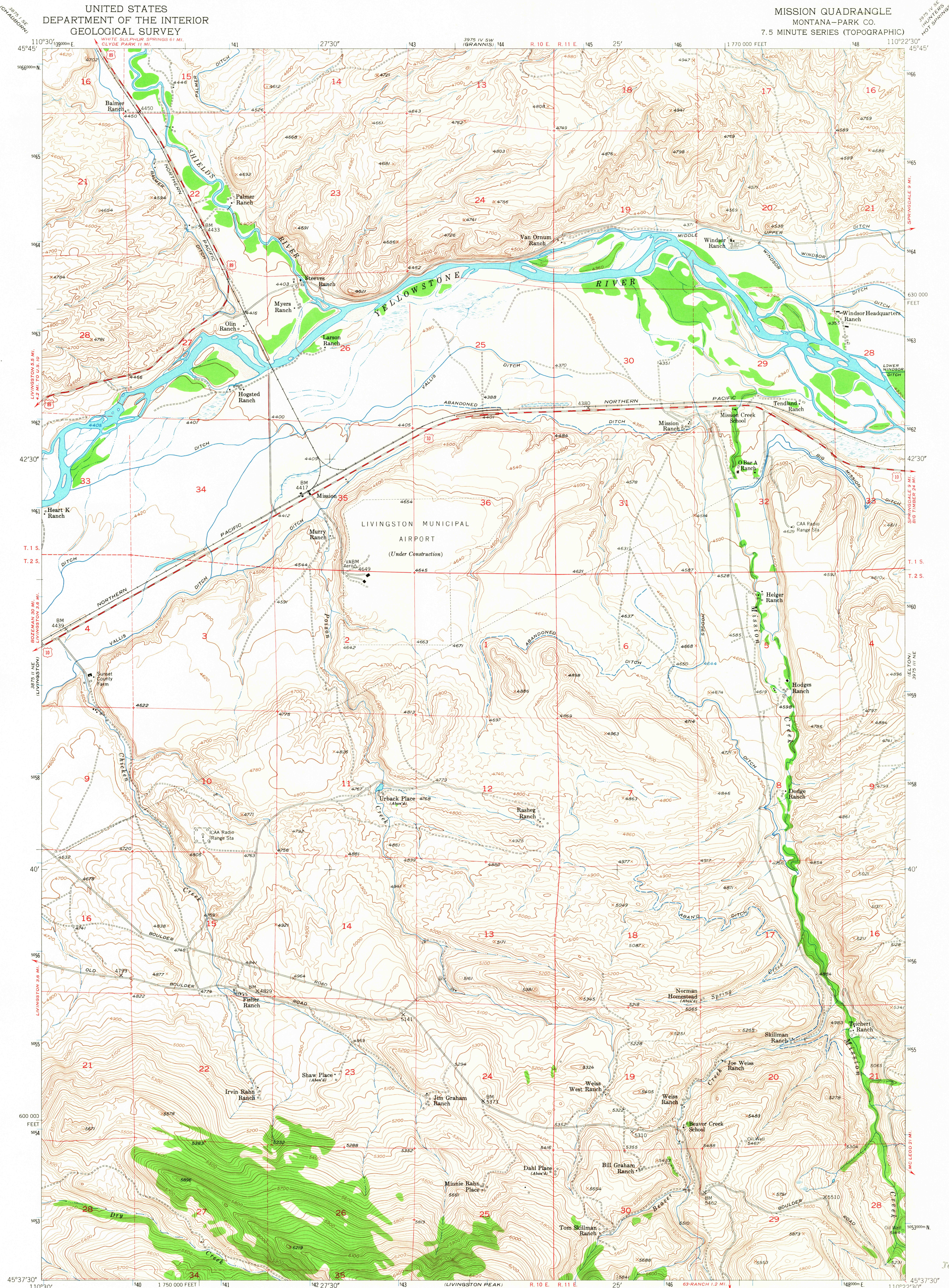
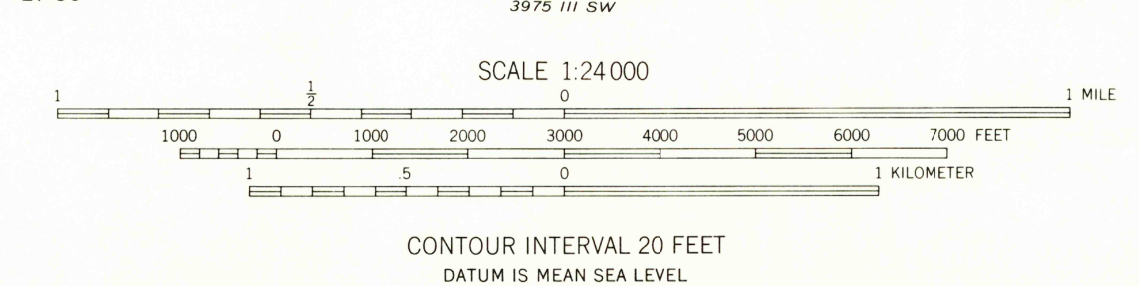
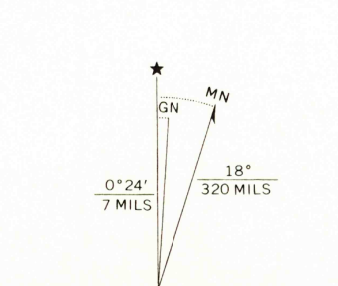


UNITED STATES
DEPARTMENT OF THE INTERIOR
GEOLOGICAL SURVEY

MISSION QUADRANGLE
MONTANA—PARK CO.
7.5 MINUTE SERIES (TOPOGRAPHIC)



Mapped, edited, and published by the Geological Survey as part of the Department of the Interior program for the development of the Missouri River Basin Control by USGS and USCGS
Topography from aerial photographs by multiplex methods by Ryal Engineering Co. Aerial photographs taken 1948 Field check 1952
Polyconic projection. 1927 North American datum 10,000 foot grid based on Montana coordinate system, south zone
Dashed land lines indicate approximate locations 1000 meter Universal Transverse Mercator grid ticks, zone 12, shown in blue



ROAD CLASSIFICATION
Heavy-duty 4 LANE 6 LANE Light-duty
Medium-duty 2 LANE 6 LANE Unimproved dirt
U.S. Route State Route
MISSION, MONT.
N4537.5-W11022.5/7.5
1952
TOPOGRAPHIC DIVISION

USGS
Historical File
Topographic Division
1765
AUG 18 1956