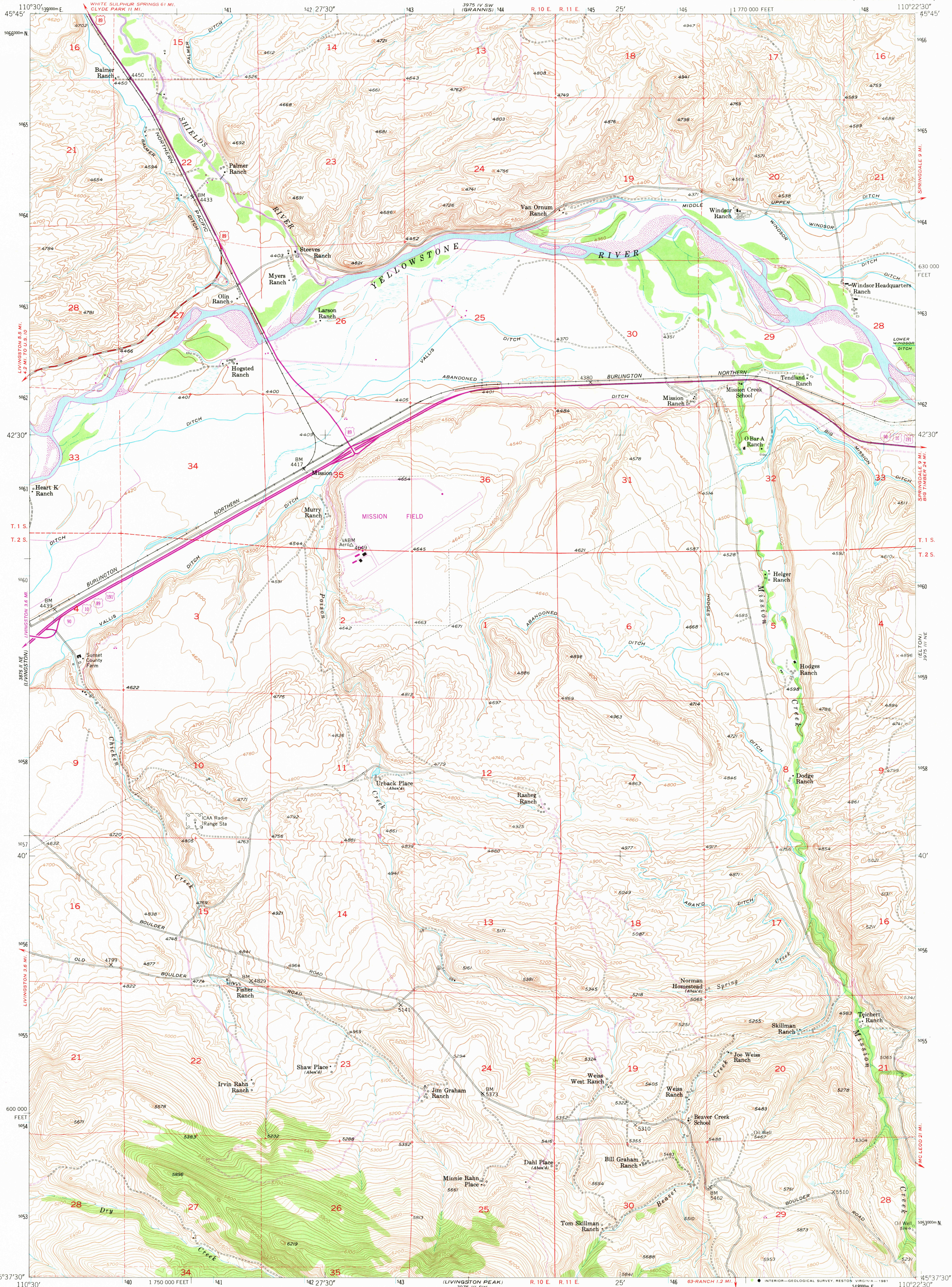


UNITED STATES
DEPARTMENT OF THE INTERIOR
GEOLOGICAL SURVEY

MISSION QUADRANGLE
MONTANA—PARK CO.
7.5 MINUTE SERIES (TOPOGRAPHIC)



Mapped, edited, and published by the Geological Survey
as part of the Department of the Interior program
for the development of the Missouri River Basin

Control by USGS and NOS/NOAA

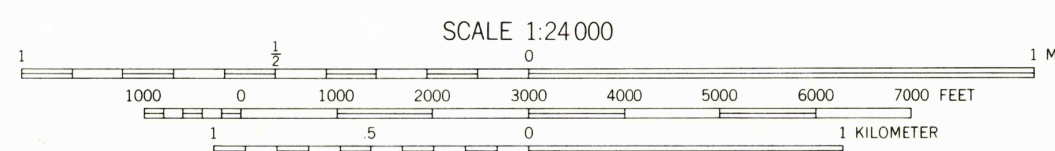
Topography from aerial photographs by multiplex methods
by Ryall Engineering Co. Aerial photographs taken 1948
Field check 1952

Polyconic projection. 1927 North American datum
10,000-foot grid based on Montana coordinate system,
south zone

Dashed land lines indicate approximate locations
1000-meter Universal Transverse Mercator grid ticks,
zone 12, shown in blue

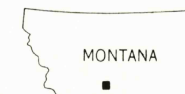
Revisions shown in purple compiled
from aerial photographs taken 1977
and other source data. This information
not field checked. Map edited 1981

UTM GRID AND 1981 MAGNETIC NORTH
DECLINATION AT CENTER OF SHEET



CONTOUR INTERVAL 20 FEET
NATIONAL GEODETIC VERTICAL DATUM OF 1929

THIS MAP COMPLIES WITH NATIONAL MAP ACCURACY STANDARDS
FOR SALE BY U. S. GEOLOGICAL SURVEY, DENVER, COLORADO 80225, OR RESTON, VIRGINIA 22092
A FOLDER DESCRIBING TOPOGRAPHIC MAPS AND SYMBOLS IS AVAILABLE ON REQUEST



QUADRANGLE LOCATION

To place on the predicted North American Datum 1983
move the projection lines 10 meters north and
60 meters east as shown by dashed corner ticks

ROAD CLASSIFICATION

Heavy-duty 4 LANE 16 LANE Light-duty
Medium-duty 4 LANE 16 LANE Unimproved dirt
U. S. Route State Route
Interstate Route

MISSION, MONT.
N4537.5-W11022.5/7.5

1952
PHOTOREVISED 1981
DMA 3975 III NW—SERIES V894

RETURN TO:
USGS NMD HISTORICAL MAP ARCHIVES

DEC 10 1981

8050