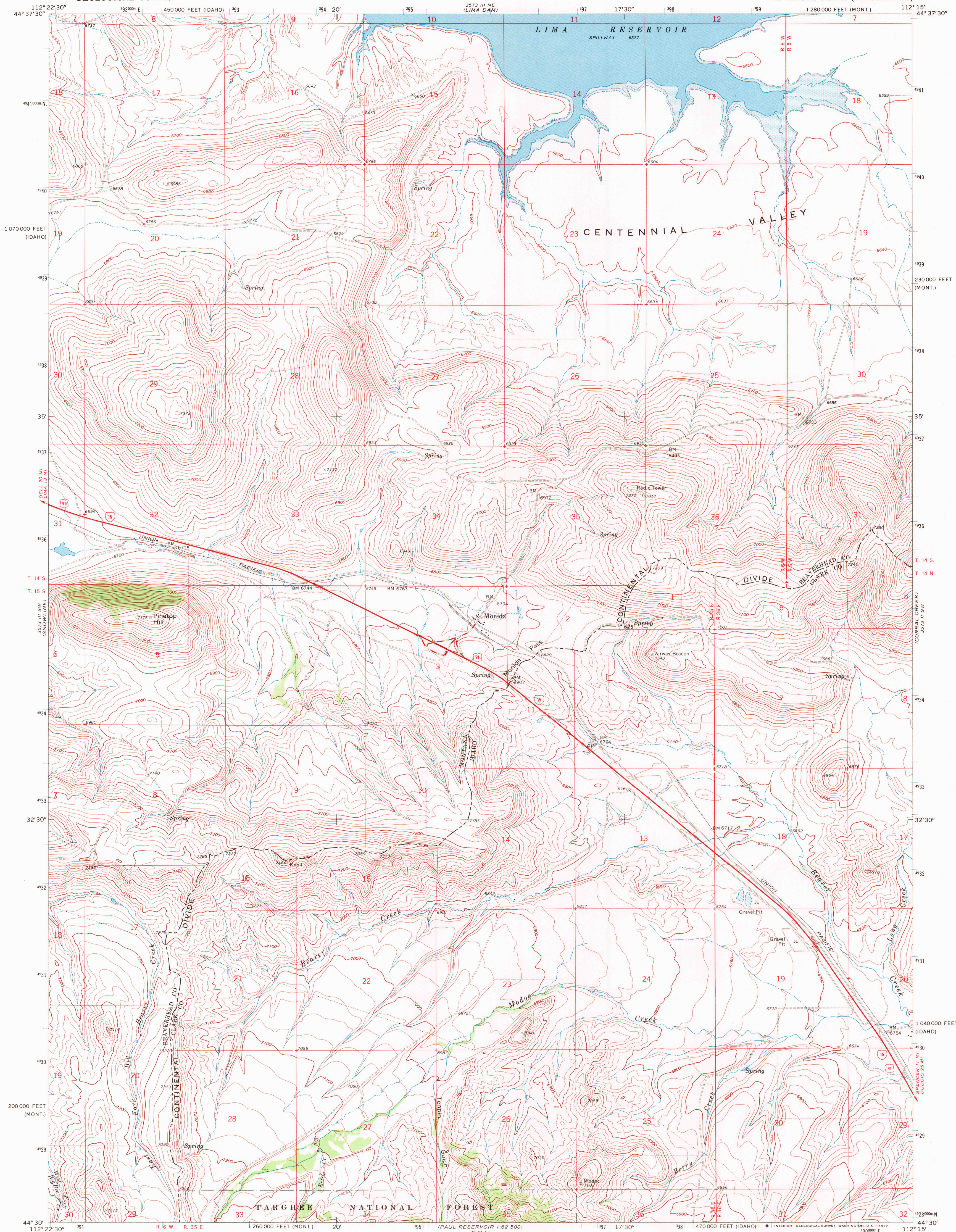


UNITED STATES
DEPARTMENT OF THE INTERIOR
GEOLOGICAL SURVEY

MONIDA QUADRANGLE
MONTANA-IDAHO
7.5 MINUTE SERIES (TOPOGRAPHIC)



Mapped, edited, and published by the Geological Survey

Control by USGS and USC&GS

Topography by photogrammetric methods from aerial photographs taken 1967. Field checked 1968

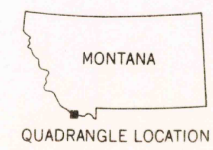
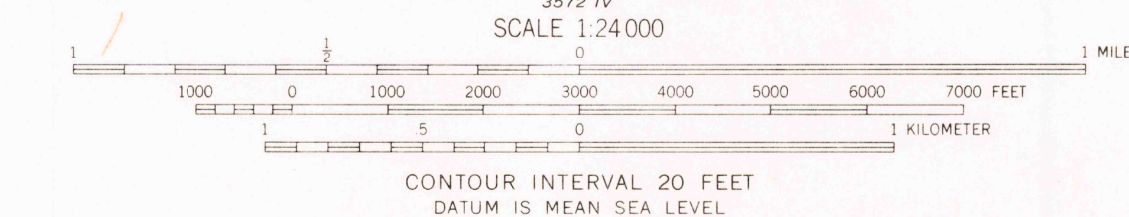
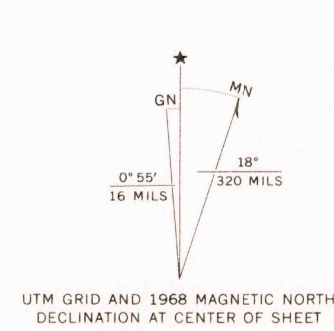
Polyconic projection. 1927 North American datum

10,000-foot grids based on Montana coordinate system, south zone and Idaho coordinate system, east zone

1000-meter Universal Transverse Mercator grid ticks, zone 12, shown in blue

Fine red dashed lines indicate selected fence lines

Areas covered by dashed light-blue pattern are subject to controlled inundation



ROAD CLASSIFICATION	
Primary highway, all weather, hard surface	Light-duty road, all weather, improved surface
Secondary highway, all weather, hard surface	Unimproved road, fair or dry weather
Interstate Route	U. S. Route

MONIDA, MONT.-IDAHO
N4430-W11215/7.5

1968

AMS 3573 III SE-SERIES V894

JAN 20 1972

2710

USGS
HISTORICAL FILE
TOPOGRAPHIC DIVISION