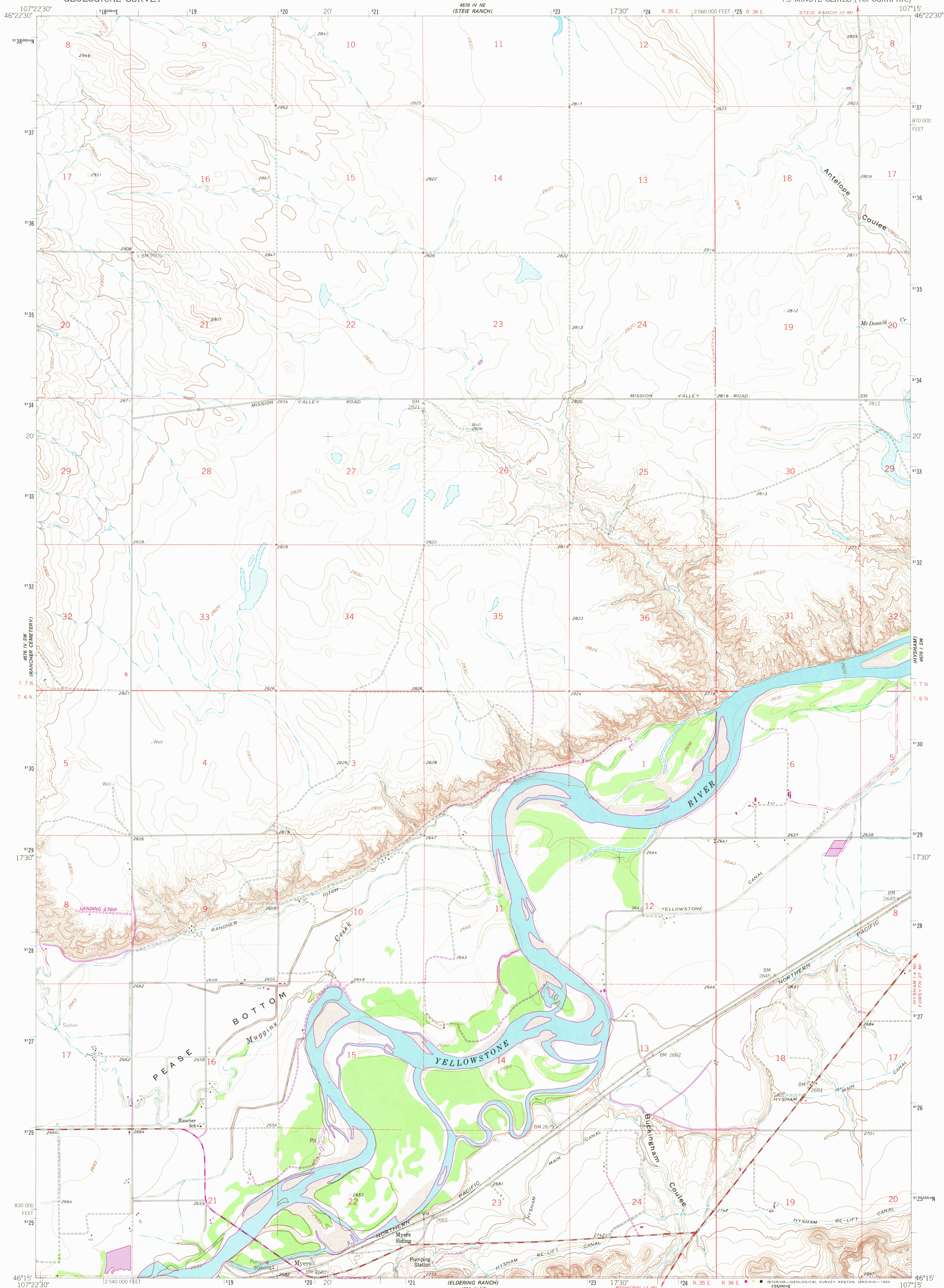
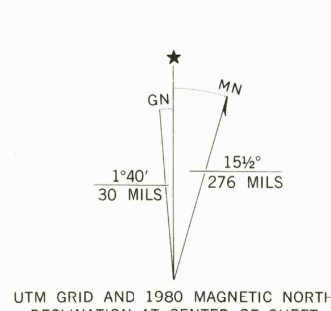


UNITED STATES  
DEPARTMENT OF THE INTERIOR  
GEOLOGICAL SURVEY

MYERS QUADRANGLE  
MONTANA-TREASURE CO.  
7.5 MINUTE SERIES (TOPOGRAPHIC)



Maped, edited, and published by the Geological Survey as part of the Department of the Interior program for the development of the Missouri River Basin Control by USGS and USC&GS  
Topography by photogrammetric methods from aerial photographs taken 1956. Field checked 1960  
Polyconic projection. 1927 North American datum 10,000 foot grid based on Montana coordinate system, south zone  
1000-meter Universal Transverse Mercator grid ticks, zone 13, shown in blue  
To place on the predicted North American Datum 1983 move the projection lines 7 meters north and 50 meters east as shown by dashed corner ticks  
Revisions shown in purple compiled from aerial photographs taken 1978. Map edited 1980. This information not field checked



CONTOUR INTERVAL 10 FEET  
DOTTED LINES REPRESENT 5-FOOT CONTOURS  
NATIONAL GEODETIC VERTICAL DATUM OF 1929  
THIS MAP COMPLIES WITH NATIONAL MAP ACCURACY STANDARDS  
FOR SALE BY U. S. GEOLOGICAL SURVEY, DENVER, COLORADO 80225 OR RESTON, VIRGINIA 22092  
A FOLDER DESCRIBING TOPOGRAPHIC MAPS AND SYMBOLS IS AVAILABLE ON REQUEST



ROAD CLASSIFICATION  
Medium-duty ——— Light-duty ———  
Unimproved dirt ———

USGS  
Historical File  
Topographic Division

MYERS, MONT.  
N4615-W10715/7.5

1960  
PHOTOREVISED 1980  
DMA 4576 IV SE-SERIES V894

NOV 28 1980  
2000