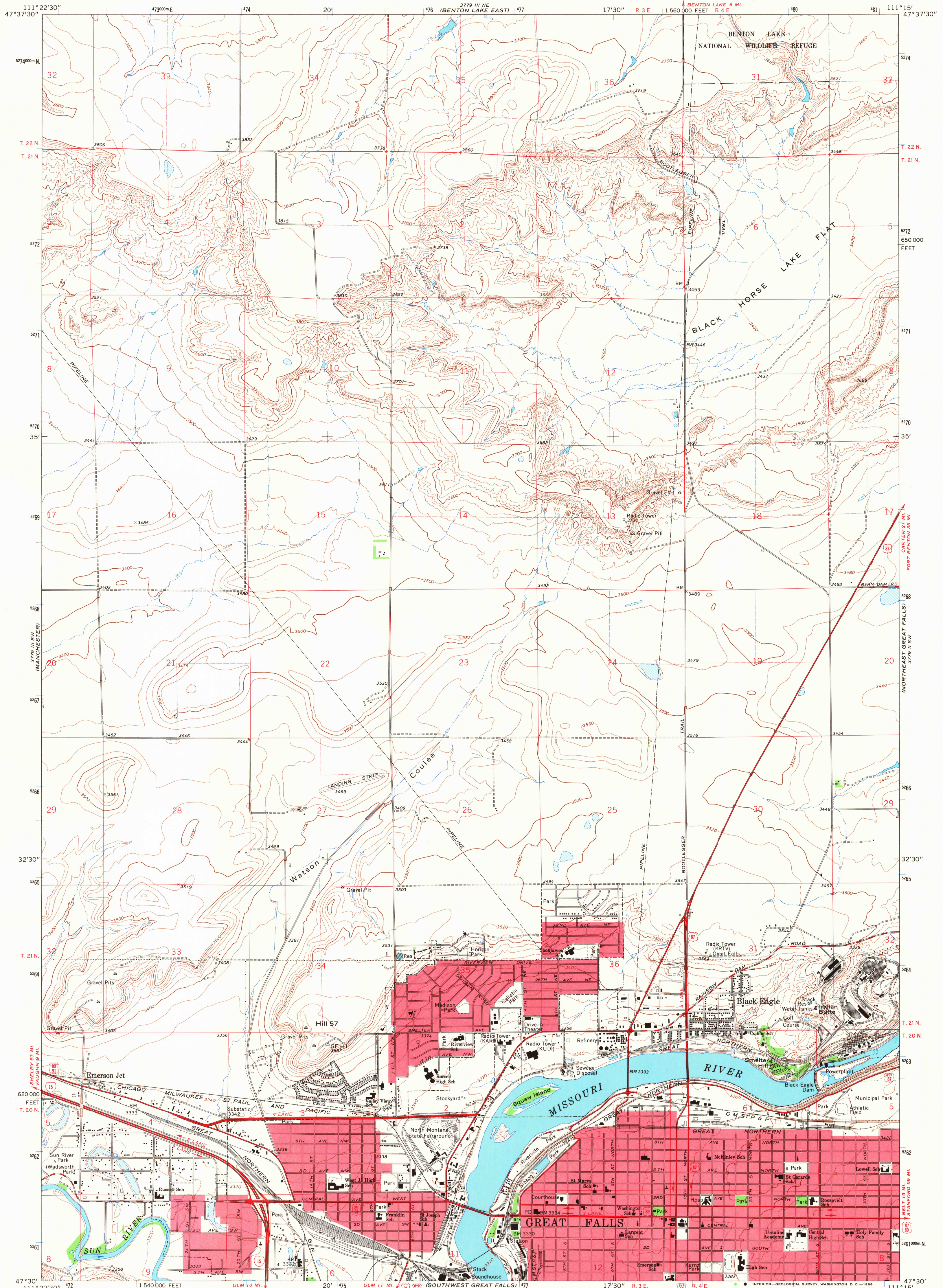
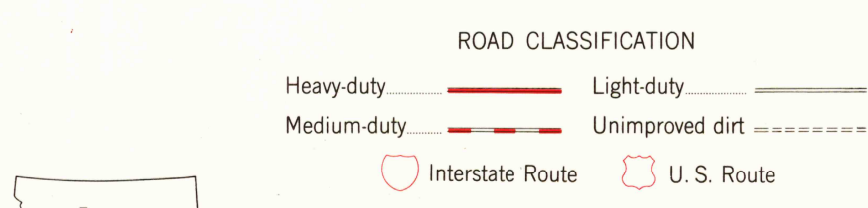
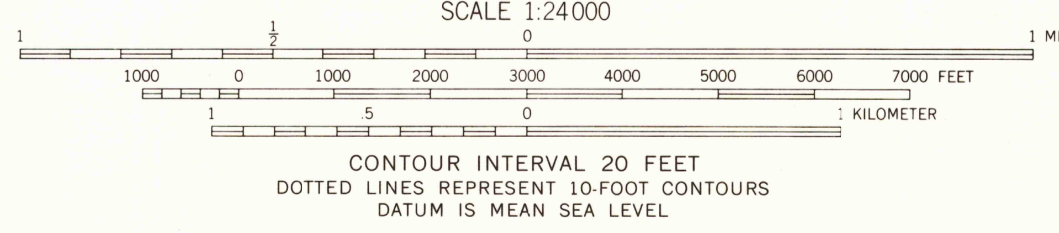


UNITED STATES
DEPARTMENT OF THE INTERIOR
GEOLOGICAL SURVEY

NORTHWEST GREAT FALLS QUADRANGLE
MONTANA—CASCADE CO.
7.5 MINUTE SERIES (TOPOGRAPHIC)
SE/4 GREAT FALLS 15' QUADRANGLE



Mapped, edited, and published by the Geological Survey
Control by USGS and USC&GS
Topography by photogrammetric methods from aerial
photographs taken 1964. Field checked 1965.
Polyconic projection. 1927 North American datum
10,000-foot grid based on Montana coordinate system,
central zone
1000-meter Universal Transverse Mercator grid ticks,
zone 12, shown in blue
Red tint indicates areas in which only
landmark buildings are shown
Fine red dashed lines indicate selected fence lines



NORTHWEST GREAT FALLS, MONT.
SE/4 GREAT FALLS 15' QUADRANGLE
N4730—W11115/7.5

1965
AMS 3779 III SE—SERIES B994

U.S.G.S.
FILE COPY
TOPOGRAPHIC DIVISION
USGS
Historical File
Topographic Division

2730
AUG 21 1968