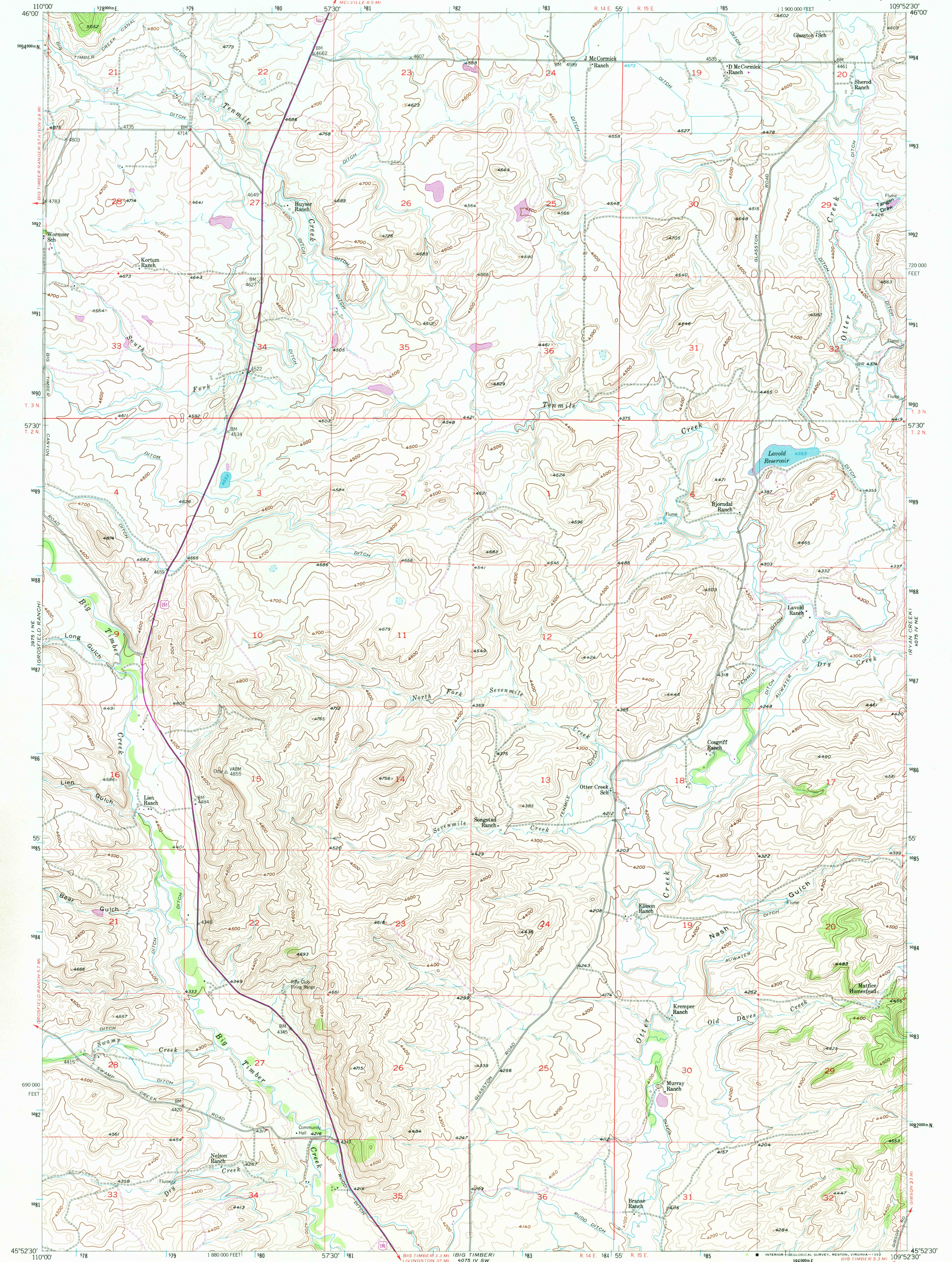


UNITED STATES
DEPARTMENT OF THE INTERIOR
GEOLOGICAL SURVEY

OTTER CREEK SCHOOL QUADRANGLE
MONTANA-SWEET GRASS CO.
7.5 MINUTE SERIES (TOPOGRAPHIC)



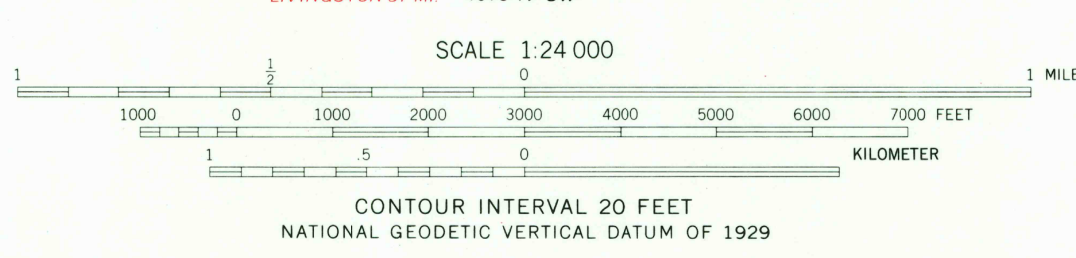
Maped, edited, and published by the Geological Survey as part of the Department of the Interior program for the development of the Missouri River Basin

Control by USGS and NOS/NOAA
Topography from aerial photographs by multiplex methods and by planetable surveys 1954. Aerial photographs taken 1951

Polyconic projection. 1927 North American datum
10,000-foot grid based on Montana coordinate system, south zone

1000-meter Universal Transverse Mercator grid ticks, zone 12, shown in blue
To place on the predicted North American Datum 1983 move the projection lines 9 meters north and 58 meters east as shown by dashed corner ticks

Revisions shown in purple compiled from aerial photographs taken 1977 and other source data. This information not field checked. Map edited 1981



THIS MAP COMPLIES WITH NATIONAL MAP ACCURACY STANDARDS
FOR SALE BY U. S. GEOLOGICAL SURVEY, DENVER, COLORADO 80225, OR RESTON, VIRGINIA 22092
A FOLDER DESCRIBING TOPOGRAPHIC MAPS AND SYMBOLS IS AVAILABLE ON REQUEST



ROAD CLASSIFICATION
Medium-duty ——— Light-duty ———
Unimproved dirt ———
Primary highway, hard surface ———
U. S. Route ———

OTTER CREEK SCHOOL, MONT.
N4552.5—W10952.5/7.5

1954
PHOTOREVISED 1981
DMA 4075 IV NW—SERIES V894

RETURN TO:
USGS NMD HISTORICAL MAP ARCHIVES