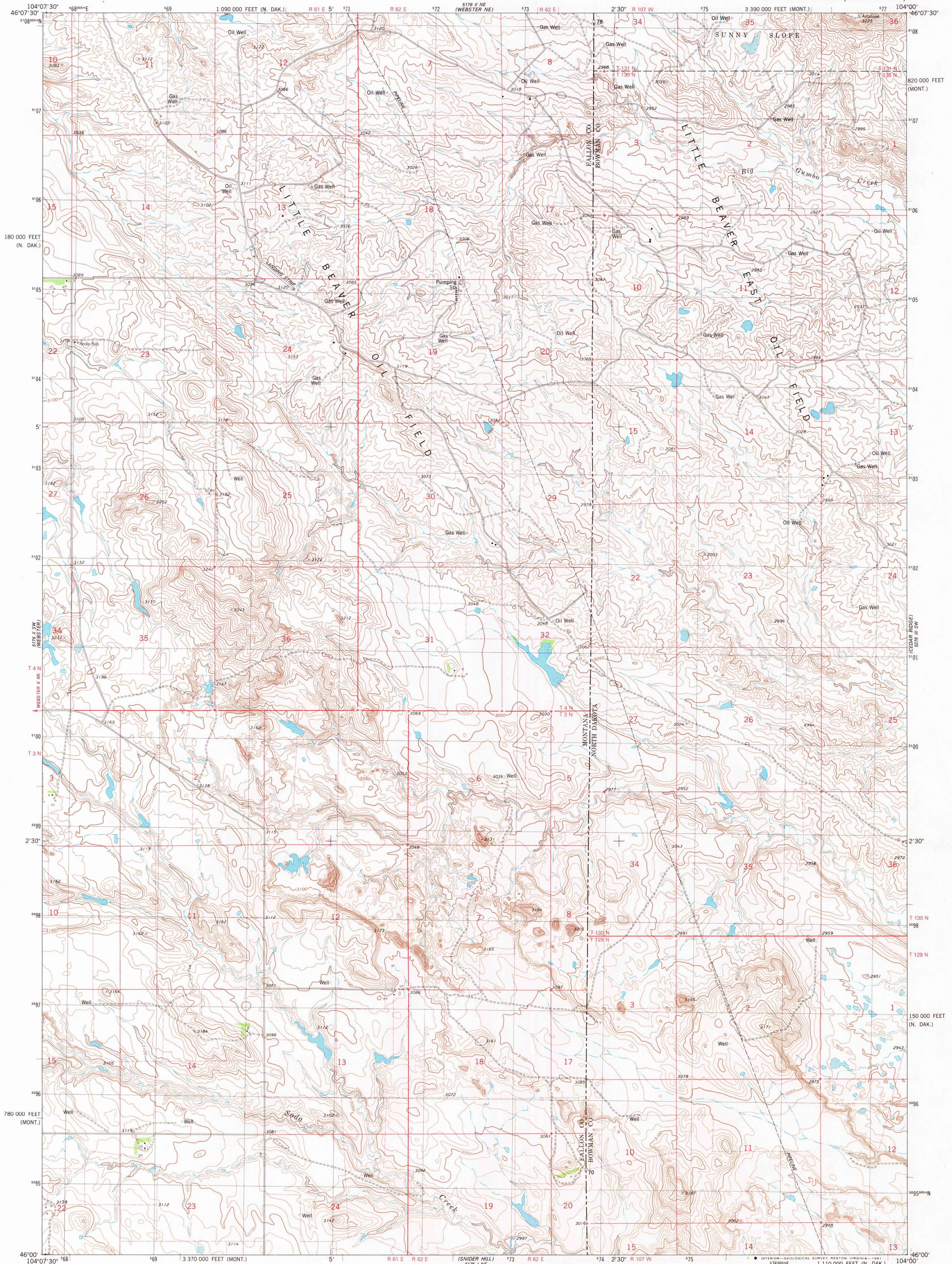
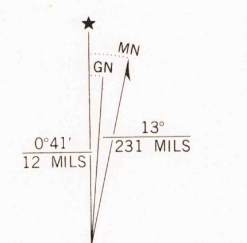


UNITED STATES  
DEPARTMENT OF THE INTERIOR  
GEOLOGICAL SURVEY

SCOLE SCHOOL QUADRANGLE  
MONTANA-NORTH DAKOTA  
7.5 MINUTE SERIES (TOPOGRAPHIC)



Mapped, edited, and published by the Geological Survey  
Control by USGS and NOS/NOAA  
Topography by photogrammetric methods from aerial photographs  
taken 1974. Field checked 1976. Map edited 1981  
Projection: Montana coordinate system, south zone  
(Lambert conformal conic)  
10,000-foot grid ticks based on Montana coordinate  
system, south zone and North Dakota coordinate system, south zone  
1000-meter Universal Transverse Mercator grid, zone 13  
1927 North American datum  
To place on the predicted North American Datum 1983  
move the projection lines 4 meters north and  
39 meters east as shown by dashed corner ticks  
Fine red dashed lines indicate selected fence lines



SCALE 1:24 000  
CONTOUR INTERVAL 10 FEET  
NATIONAL GEODETIC VERTICAL DATUM OF 1929



ROAD CLASSIFICATION  
Primary highway, hard surface  
Secondary highway, hard surface  
Unimproved road  
Interstate Route  
U. S. Route  
State Route  
Light-duty road, hard or improved surface  
Unimproved road

SCOLE SCHOOL, MONT.-N. DAK.  
N4600-W10400/7.5

1981  
DMA 5176 II SE-SERIES V894

RETURN TO:  
USGS NMD HISTORICAL MAP ARCHIVES

DEC 4 1981