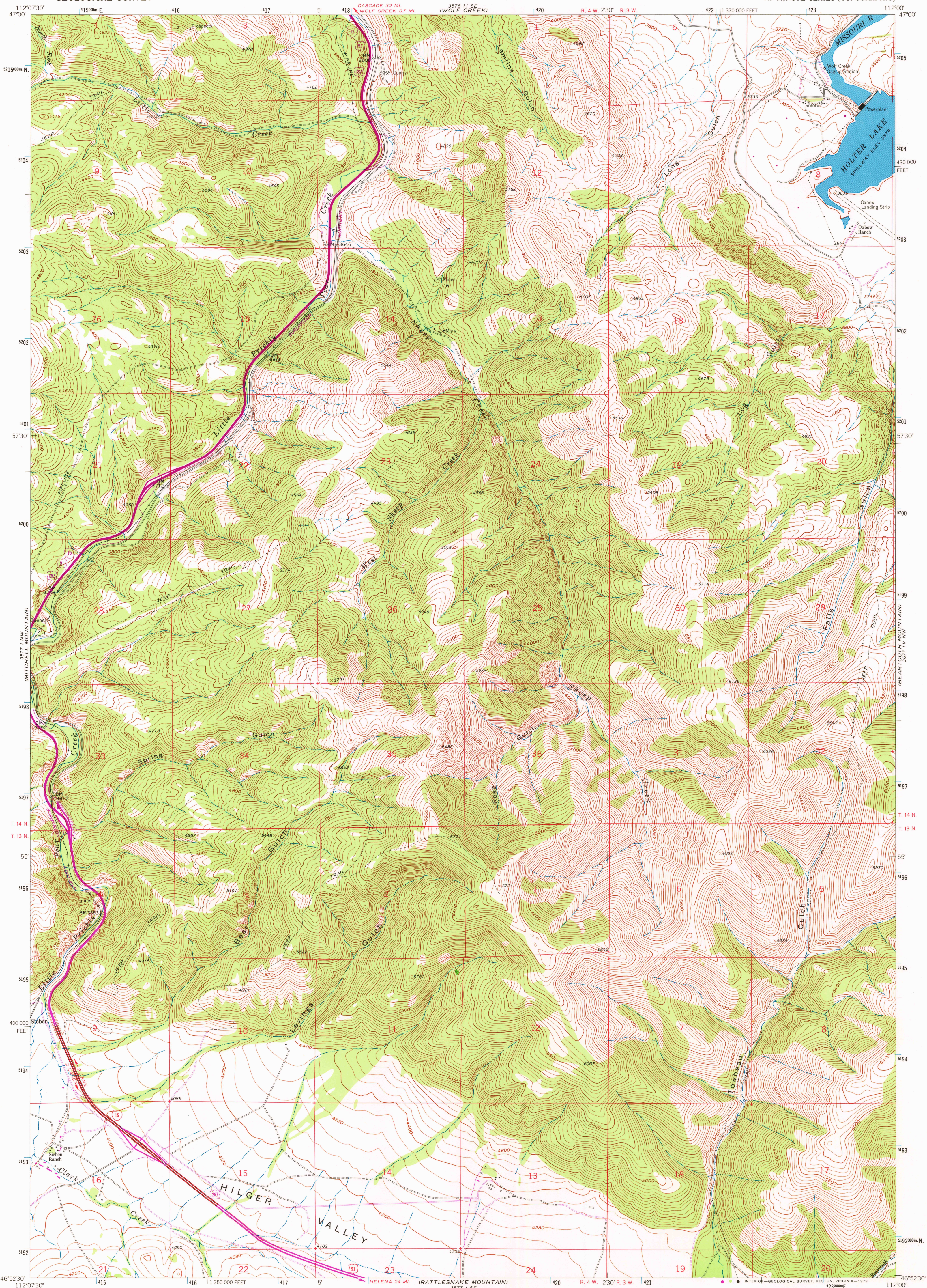


UNITED STATES
DEPARTMENT OF THE INTERIOR
GEOLOGICAL SURVEY

SHEEP CREEK QUADRANGLE
MONTANA-LEWIS AND CLARK CO.
7.5 MINUTE SERIES (TOPOGRAPHIC)



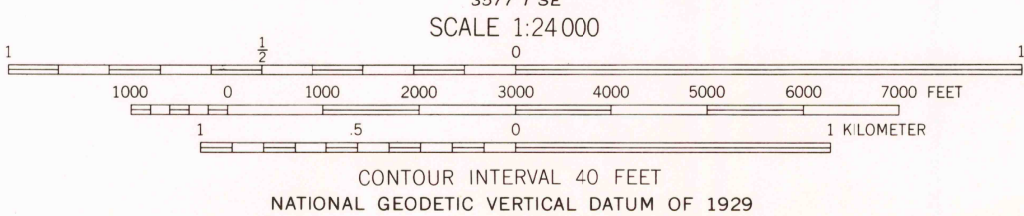
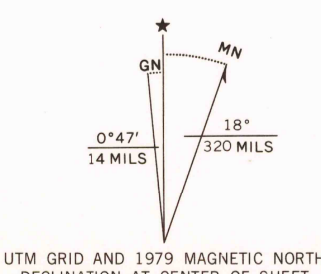
Mapped, edited, and published by the Geological Survey

Control by USGS and USC&GS

Topography by photogrammetric methods from aerial photographs taken 1956. Field checked 1962

Polyconic projection. 1927 North American datum. 10,000-foot grid based on Montana coordinate system, central zone. 1000-meter Universal Transverse Mercator grid ticks, zone 12, shown in blue

Revisions shown in purple compiled from aerial photographs taken 1976 and other source data. This information not field checked. Map edited 1979



ROAD CLASSIFICATION	
Heavy-duty	Light-duty
Medium-duty	Unimproved dirt
Interstate Route	U.S. Route
	State Route

SHEEP CREEK, MONT.
N4652.5-W11200.7.5

1962
PHOTOREVISED 1979
AMS 3577 I NE-SERIES V894

RETURN TO:
HISTORICAL MAP ARCHIVES

SEP 22 1982

2588