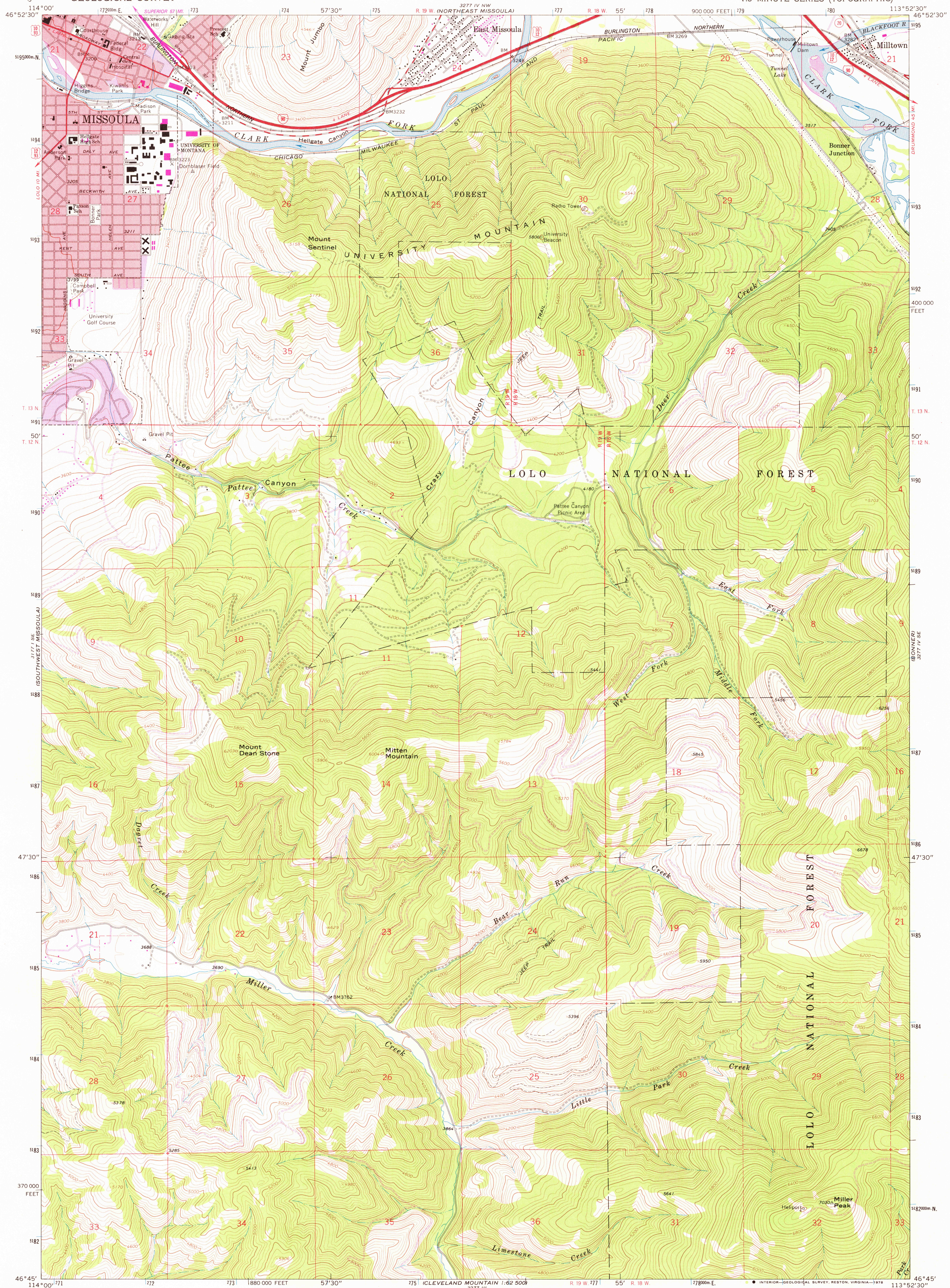
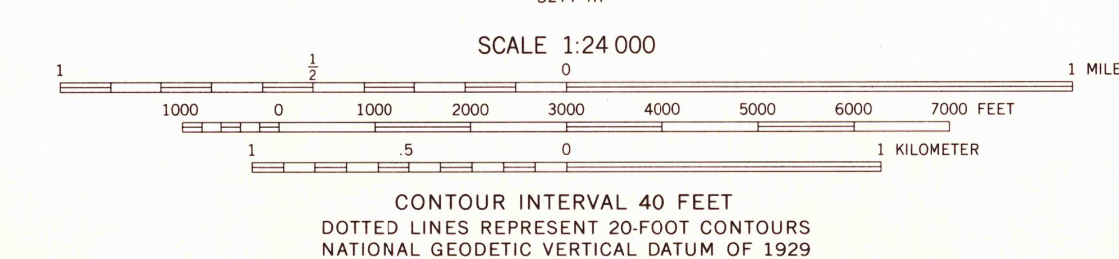


UNITED STATES
DEPARTMENT OF THE INTERIOR
GEOLOGICAL SURVEY

SOUTHEAST MISSOULA QUADRANGLE
MONTANA—MISSOULA CO.
7.5 MINUTE SERIES (TOPOGRAPHIC)



Maped, edited, and published by the Geological Survey
Control by USGS and NOS/NOAA
Topography by photogrammetric methods from aerial photographs
taken 1961. Field checked 1964
Polyconic projection, 1927 North American datum
10,000-foot grid based on Montana coordinate system, central zone
10,000-meter Universal Transverse Mercator grid ticks,
zone 12, shown in blue
Red tint indicates areas in which only landmark
buildings are shown
Fine red dashed lines indicate selected fence lines
Purple tint indicates extension of urban areas
Where omitted, land lines have not been established
Revisions shown in purple and recompilation of woodland areas
compiled from aerial photographs taken 1976. Map edited 1978
This information not field checked



ROAD CLASSIFICATION
Heavy-duty ——— Light-duty ———
Medium-duty ——— Unimproved dirt ———
Interstate Route U.S. Route State Route



SOUTHEAST MISSOULA, MONT.
N4645—W11352.5/7.5

USGS
Historical File
Topographic Division
1964
PHOTOREVISED 1978
AMS 3277 IV SW—SERIES V894

3850