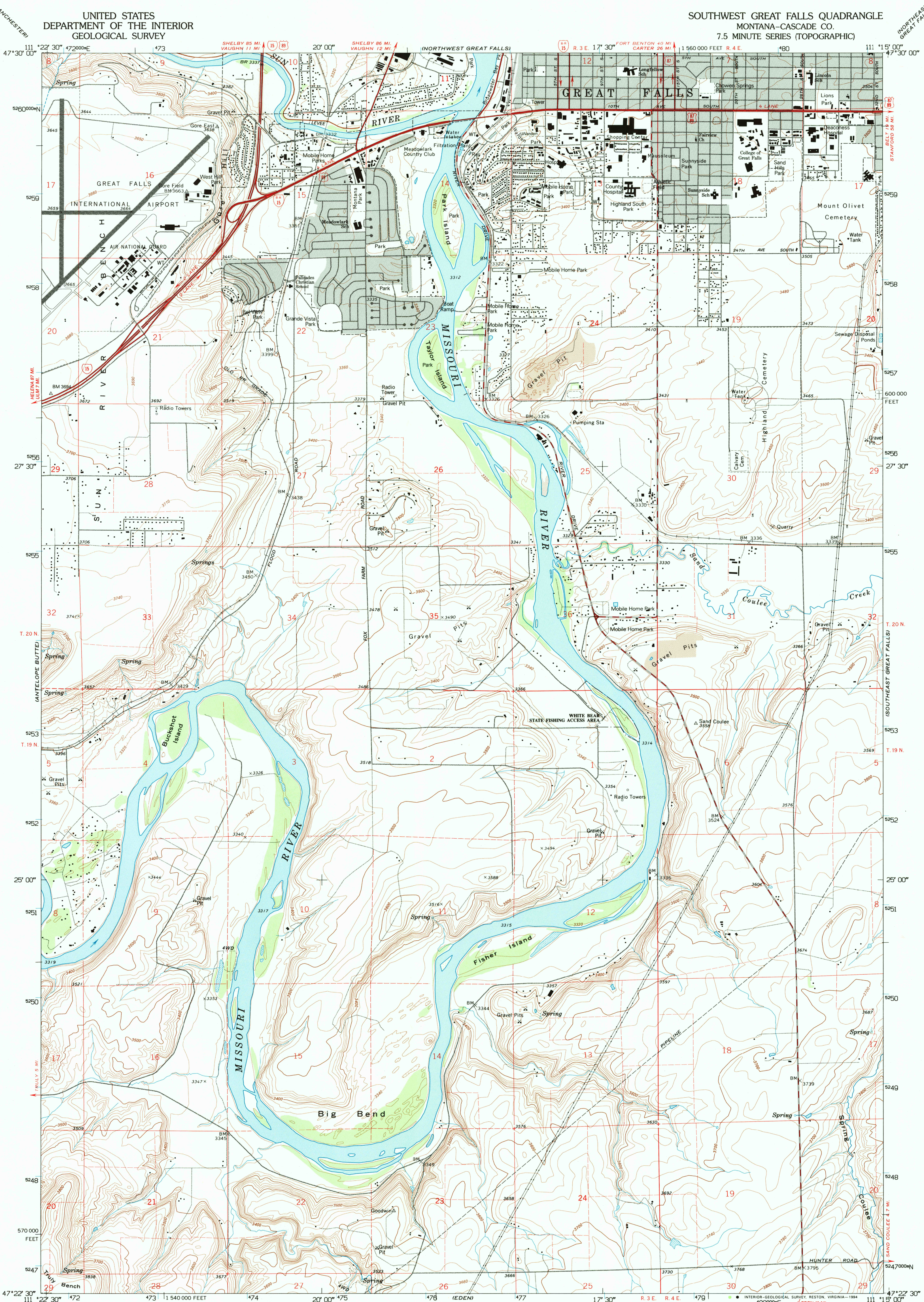


UNITED STATES
DEPARTMENT OF THE INTERIOR
GEOLOGICAL SURVEY

SOUTHWEST GREAT FALLS QUADRANGLE
MONTANA-CASCADE CO.
7.5 MINUTE SERIES (TOPOGRAPHIC)

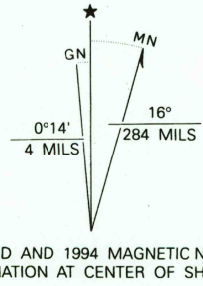


Produced by the United States Geological Survey
Control by USGS and NOS/NOAA

Compiled from aerial photographs taken 1964. Field checked 1965
Revised from aerial photographs taken 1990 and other sources
Map edited 1994

North American Datum of 1927 (NAD 27). Projection and
blue 1000-meter Universal Transverse Mercator ticks, zone 12
10000-foot ticks: Montana Coordinate System, central zone
North American Datum of 1983 (NAD 83) is shown by dashed
corner ticks. The values of the shift between NAD 27 and NAD 83
for 7.5-minute intersections are obtainable from National Geodetic
Survey NADCON software

There may be private inholdings within the boundaries of the
National or State reservations shown on this map
Gray tint indicates areas in which only landmark buildings are shown
Fine red dashed lines indicate selected fence and field lines where
generally visible on aerial photographs. This information is unchecked



SCALE 1:24,000
1 1000 0 1000 2000 3000 4000 5000 6000 7000 FEET
1 5 10 15 20 KILOMETER
CONTOUR INTERVAL 20 FEET
SUPPLEMENTARY CONTOUR INTERVAL 10 FEET
NATIONAL GEODETIC VERTICAL DATUM OF 1929



ROAD CLASSIFICATION
Heavy-duty ——— Light-duty ———
Medium-duty ——— Unimproved dirt ———
Interstate Route U.S. Route

SOUTHWEST GREAT FALLS, MONT.
47111-D3-TF-024

1965
REVISED 1994
DMA 3778 IV NE-SERIES V894

