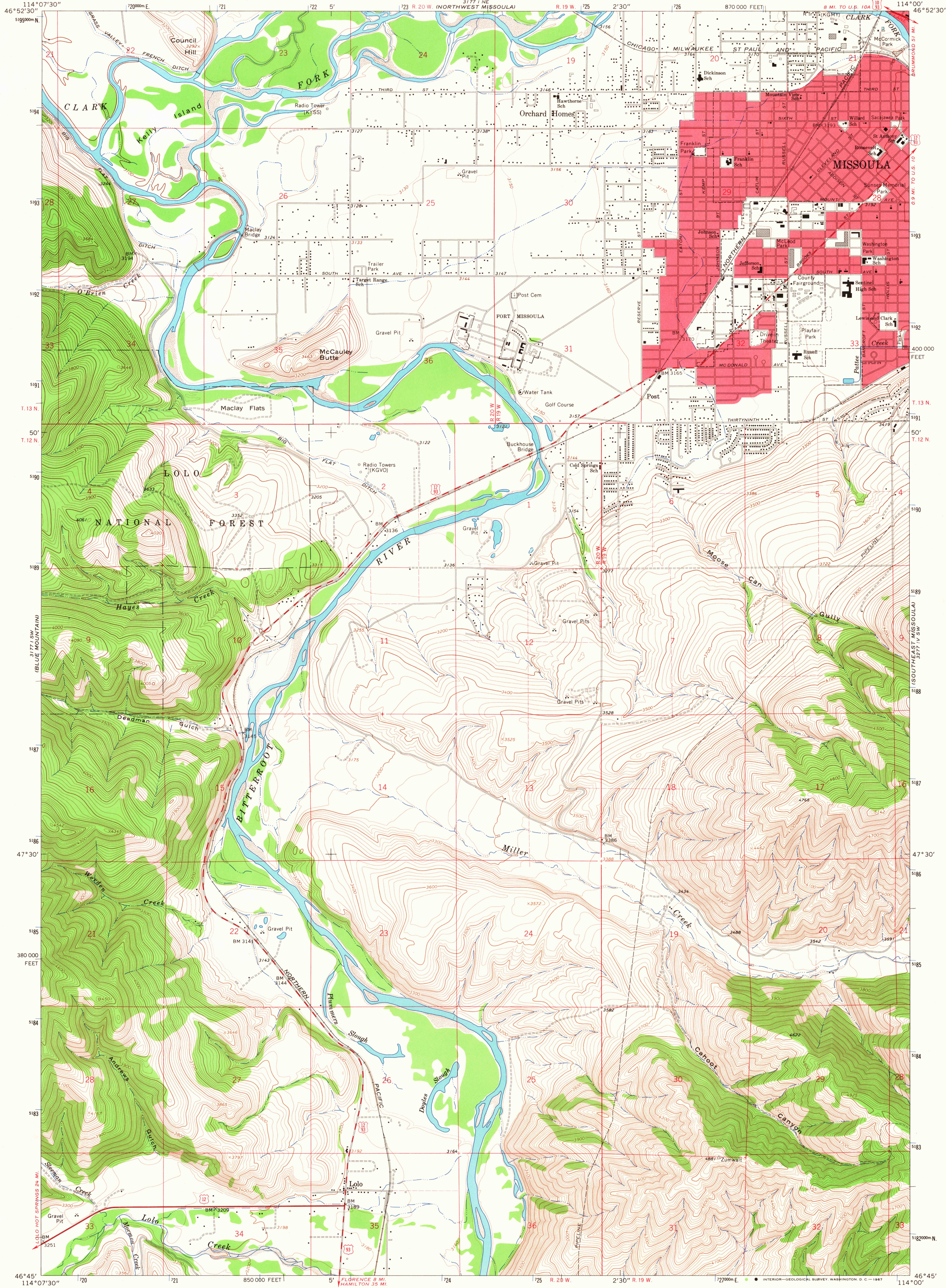


3177 1 NE
(PRIMROSE)

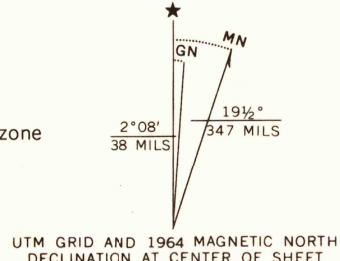
UNITED STATES
DEPARTMENT OF THE INTERIOR
GEOLOGICAL SURVEY

SOUTHWEST MISSOULA QUADRANGLE
MONTANA—MISSOULA CO.
7.5 MINUTE SERIES (TOPOGRAPHIC)

3177 1 NE
NORTHEAST MISSOULA



Mapped, edited, and published by the Geological Survey
Control by USGS and USC&GS
Topography by photogrammetric methods from aerial
photographs taken 1961. Field checked 1964
Polyconic projection. 1927 North American datum
10,000-foot grid based on Montana coordinate system, central zone
1000-meter Universal Transverse Mercator grid ticks,
zone 11, shown in blue
Red tint indicates area in which only
landmark buildings are shown
Fine red dashed lines indicate selected fence lines



SCALE 1:24,000
1 1000 2000 3000 4000 5000 6000 7000 FEET
1 5 10 20 30 40 50 60 70 80 90 100 METERS
CONTOUR INTERVAL 20 FEET
DOTTED LINES REPRESENT 10-FOOT CONTOURS
DATUM IS MEAN SEA LEVEL
THIS MAP COMPLIES WITH NATIONAL MAP ACCURACY STANDARDS
FOR SALE BY U.S. GEOLOGICAL SURVEY, DENVER, COLORADO 80225, OR WASHINGTON, D.C. 20024
A FOLDER DESCRIBING TOPOGRAPHIC MAPS AND SYMBOLS IS AVAILABLE ON REQUEST

ROAD CLASSIFICATION
Heavy-duty ——— Light-duty ———
Medium-duty ——— Unimproved dirt ———
U.S. Route



SOUTHWEST MISSOULA, MONT.
N4645—W11400/7.5

1964

AMS 3177 1 SE—SERIES V894

USGS
Historical File
Topographic Division

SEP 7 1967

3205